

1917

U.S. MARTIAL ARMS Collector

and *Springfield Research Newsletter*



Number 82 October 1997

\$7.50



NOTE CARDS with ENVELOPES

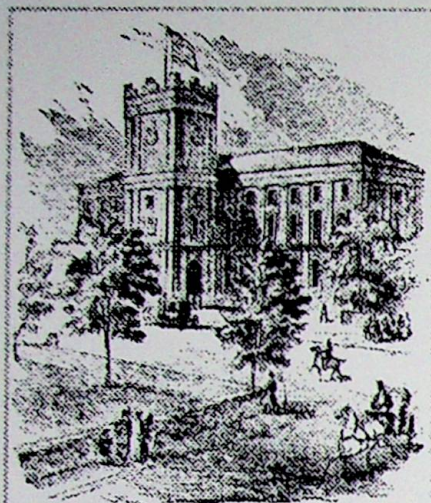
From Original Period Steel Engravings

Card Size: 4 1/2" x 6 1/4"

Crisp Detail

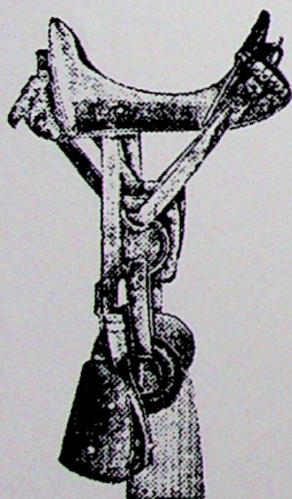
Shrinkwrapped in packages of 20 (all same card)

Each Card a Print from an
Original 19th Century steel engraving



*Main Arsenal
National Armory
Springfield, Mass*

Springfield Armory
color: antique vellum



U.S. McClellan Saddle

McClellan Saddle
color: antique vellum



Confederate Soldier
color: pale grey

\$18 postpaid/pkg. of 20

Collectors' Library

P.O. Box 273

Eugene, OR 97440

EDITOR & PUBLISHER
Franklin B. Mallory

CIRCULATION MANAGER
Franklin B. Mallory

U.S. MARTIAL ARMS COLLECTOR

and *Springfield Research Newsletter*



Number 82

October 1997

A quarterly publication of
SPRINGFIELD RESEARCH
SERVICE, P.O. Box 4181, Silver
Spring, MD 20904. Printed in U.S.A.
Send changes of address and all other
material to this address.

Subscription price \$25 per year,
including First Class postage anywhere
in the world. Air mail postage \$10 per
year additional.

Phones:

Voice: 301/622-4103
FAX: 301/622-3480
Modem: 301/622-2247
Fidonet: 1:109/417
E-Mail: frank.mallory@srs.
blkcat.com

ADVERTISING: Collector cards or
arms-related business cards: \$10 per
issue. Commercial advertisers, please
write for rate card.

© 1997, SPRINGFIELD RESEARCH
SERVICE. All rights reserved.

Cover: Hotchkiss Army rifle serial
no. 2162. Photo courtesy Harry
Hunter, Smithsonian Institution.

2 MISCELLANEOUS NEWS AND NOTES

3 LETTERS RECEIVED & SENT

10 EARLY RIMFIRE CARTRIDGES AND REMINGTON
CONVERSIONS

13 GUNS "LETTERED" DURING CURRENT PERIOD

15 SERIAL NUMBER DATA

Model 1917 Rifles	15
Model 1922 Rifles	24
M1 Carbines	24

Miscellaneous News and Notes

Research During This Period

At College Park, I finished the OSS records most recently released by the CIA. Only a few serial numbers and hardly anything on weapons procurement. There was an interesting note that listed "Rifle., cal. .30-06, Sedgley Springfield, with bayonet and scabbard" as one of the available OSS ordnance items. I'm trying to get some more information on these rifles.

Also at College Park, I went through some of the immediate post-WWII Marine Corps records; turned up a fair number of serial numbers.

Using the Archives page on the Internet, I found a listing of photographs of Ordnance subjects which I had not seen before. I plan to capture many of these images using my newly-acquired digital camera. The Internet location for ordering information is: www.nara.gov:80/cgi-bin/starfinder/22073/complex.txt

At Archives I, I went through more of the Ord. Dept. classified files for 1917-40, more early Navy Bureau of Ordnance records, and some of the Ordnance Dept. letters received for the 1852-56 period.

Still looking for an official record listing the serial numbers of Sharps carbines used by John Brown, I hired a researcher at the Kansas State Historical Center to go through Brown's papers that are on file there. No Sharps numbers were found, but she did turn up the numbers of 36 Colt Navy revolvers issued to Brown's followers in 1858. They have been added to our database.

News from the Legal Front

I finally became convinced that the M1 rifle sales records are beyond the reach of the Government as a consequence of their being turned over to the Corporation for the Promotion of Rifle Practice and Firearms Safety (former DCM). Consequently, I engaged an attorney and filed suit against the Department of Defense under the Privacy Act of 1974 to get a court order directing the Army to retrieve the sales records, which have been ruled to contain protected data.

Obviously, I am interested in more than my own records, and my

attorney thinks the court will order the return of all Government records that were released, without filing a class action suit. But if this does not succeed, I may be contacting you to enlist your participation in this suit.

My FOIA request for copies of early M1903 sales records in the 1000000 - 1200000 serial range was also turned down; but these records are still under Government control, and I am still hoping to get copies.

Contributors

Thanks to Bev and Tom Lowry, Mitch Yakelson, Larry Byrd, Jerry Coates, and others who contributed data or other material. ♣

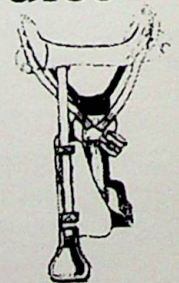
TRADING POST

The Trading Post is for non-commercial users only. There is no charge for ads, but they are run on a space-available basis.

* **Wanted:** Metal scabbard for Pedersen Device; bipod for Johnson LMG; Black Fiberglass stock for M1 Garand; Kit of tools for 1903 Springfield. Thomas Mulligan, 222 Sunset Ave., Island Park NY 11558. E-Mail MULLIGUN@aol.com

WANTED

American Military Saddles 1800 - 1942



Single Pieces or Collections
Nice Condition Only

R. Stephen Dorsey
P.O. Box 263
Eugene, OR 97440
1-541-937-3348
Pacific Time

Letters Received & Sent

Marlin Barrel on M1 NM Rifle

I recently purchased a Garand which appears to be a National Match. It's a Springfield, serial # 1071827; receiver marked D28291-17; barrel marked NM MARLIN D6535448 4-53 84804 PM. Stock is glass bedded. NM op rod. NM sights. I spoke to Scott Duff he said all the sales records are at Port Clinton and they will not give any numbers out. Do you know or better yet have any information on Marlin NM barrels?

T.M., New York

I have no info on your gun; as Scott may have told you, I am still trying to get the MINM numbers, but it is going very slow. I haven't seen anything at all about Marlin bbls for the M1 -- only LM and Springfield were used on NM rifles, as well as I remember. Go back to the Newsletter that covered MINM rifles, and check the characteristics of your rifle against the info in that issue.

Cal. .22 Remington Rolling Block Rifle

I'm trying to determine if a rolling block I purchased recently might be one of Navy's 0.22 conversions. The rifle is a Springfield Armory manufactured rolling block. It is marked on the right side "U.S. Navy" and has an eagle with wings spread. There is a faint ESA cartouche in an oval on the left side of the stock just behind the metal. The tang has the usual Remington patents. There are no inspector's marks and the rear sight groove is half inch from the receiver ring. All this is typical of a rifle sold to France during the Franco Prussian war.

The unusual things about the rifle are as follows. On the left side of the barrel just in front of the receiver ring is the following stamping: "No. 7 WWK 1889". The breechblock has been threaded on its face and a penny sized steel disk screwed into place. The firing pin has been replaced with a sleeve with an offset firing pin that goes thru a hole in the bottom of the metal disk. The rear sight has had the ladder removed and only retains the battlefield sight. The extractor is missing, and the barrel is in the 50/70 caliber configuration.

I'm trying to determine if this is one of the rolling blocks converted by the U.S. Navy to fire 0.22 in 1889. Evidence for this is the breechblock

conversion and the barrel stamping. Against this the lack of inspectors marks suggesting the rifle was never in U.S. service, no barrel insert in 0.22, and a statement in Flaydermann that the serial numbers were always two digits suggesting that it should read "07" not "7". Any help you might offer would be appreciated.

jlyon@DFPM.UTAH.EDU

I don't know whether the single-digit numbers were preceded by a 0; the report of shipment from Winchester lists numbers "1" through "9", but this may be a simplification. We have only four other number citations for these, all 2-digit. I have seen extensive documentation on these in the Navy Bureau of Ordnance records, but I don't think it went into the serial number striking.

Rifled & Sighted 1853 Cadet Muskets

It was interesting to read about your 1851 rifled & sighted cadet musket in issue No. 80. Although earlier than what I usually collect, in the past year I acquired two of them very reasonably. These were allegedly used at the US Military Academy at West Point and they bear certain markings that are somewhat similar. Will list these below and will include those on your musket and also a fourth musket recently advertised:

	LOCK DATE	LOWER BAND	BUTT PLATE
Musket #1	1853	66	C17
Advertised Musket	1853	180	C43
Musket #2	1853	182	A4
Your Musket	1853	244	A18

The "1853" also appears on the barrel tang. The number on top of the lower barrel band may possibly be tied in with the total number of muskets rifled and sighted. The annual report of the Chief of Ordnance for fiscal year 1857 lists 314 muskets rifled and sighted for the period 1856/1857. The next year lists an additional 9 for a total of 323. The marking on the lower band may peak at this number and it might represent a serial number or inventory control number applied at West Point. The butt plate marking involves both a letter and a number. The

letter may denote a cadet company and the digits possibly a rack number. Other marks sometimes appear on these cadet muskets, but the ones listed above are constant as to location. I also have an 1851 cadet bayonet. Like yours, it is not numbered.

W.B.R., Wisconsin

I've been going through the Ordnance records of the 1850s to try to get some information on the 1853-dated Cadet muskets. I haven't finished this, but I did find an interesting note in the 1868 records from VMI, requesting that they be re-supplied with Model 1851 Cadet muskets.

Fred Gaede sent in a copy of a letter that he found in the papers of the late Bill Phillips that might have some bearing on this. The letter dated Jan. 12, 1866, from the Chief of Ordnance to the C.O. of Springfield Armory, stated that the Naval Ordnance Bureau has requested marks A over 1, A over 2, ..., B over 61, ..., C over 121, ..., H over 421 on the butt plates of rifles then being prepared for the U.S. Naval Academy. (diagram showing sample markings just like those on the butt plates of our 1853 dated Cadets).

I went into the Letters Received file for the Chief of Ordnance and found the original request to be somewhat different: "As the Midshipmen at the Naval Academy are divided into eight companies of sixty each for Infantry drill, and Admiral Porter desires that each cadet shall always use the Musket which is first given him, I have the honor to request that they may be marked with brass numbers and letters on the stock near the butt on the same side as the lock plate. The numbers and letters to be about one half inch in height and the letter placed just above the number — thus the first sixty muskets to be marked A over 1, A over 2, etc., the second 60 B over 61, B over 62, ... The remaining twenty muskets need not be marked, but I would suggest that some spare letters and numbers be sent with them so they can be marked when needed".

What model Cadet muskets were being made for the Navy? The Maynard-primed M1858 was the current model, but Springfield had none on hand. Springfield was busy developing the 2nd Allin musket and couldn't give much attention to the Navy order. Finally, they replied on June 27, 1866: "Several hundred repaired arms corresponding to Model 1864

except with barrel & stock 4" shorter and with 2 bands are on hand. They resemble the Cadet musket." These were acceptable to Adm. Wise (who said they should be sent to the USS SABINE at Boston) and were furnished, presumably marked on top of the buttplates as ordered by Gen. Dyer.

It is possible that the USNA had M1851 Cadet rifles earlier, but they would not have been dated 1853. A memo dated July 9, 1860, requisitioned parts needed for the Cadet muskets supplied from Watervliet Arsenal in April, 1852.

"S.A. SALES" Stamp on Krag Carbine

Recently I saw a M1899 Krag carbine with an unusual marking. The gun's serial number is 352783 and on the rounded surface of the receiver on the right side between the bolt and magazine is:

**S.A. SALES
TY (or TV)**

The "S.A." looks like a gang stamp that stamped both letters at once. The "Sales/TY" is also a gang stamp that stamped all letters at once. The marking is upside down in relation to the rest of the gun.

Have you or your readers any idea what these mean? Could it have been a marking indicating a sale from Springfield Armory?

C.H., Ohio

That's a new one to me. Anybody else have any idea?

Drilled & Tapped M1922 Rifles

In the article by Mr. Ewalt, he seems to infer (p. 81-13) that Model of 1922 pieces were not drilled and tapped for telescope blocks. This position is contradictory to the information provided in Bill Brophy's treatise, *The Springfield 1903 Rifles*. Specifically, on pages 276 and 277, Brophy includes directions as to how equipping one of these rifles with telescope bases could be accomplished.

There is so much misinformation, in part due to dogmatic positions taken by well meaning collectors, that I feel it necessary in this case to make sure that the fraternity realizes that a Model of 1922 with bases should not be automatically thought to have had them installed by some "...gunsmith...". A copy of the extract from Brophy's tome is included.

J. A. S., Connecticut

"In the February 15, 1924, issue of the *American Rifleman*, the DCM announced the following about fitting telescope bases to the Model 1922 rifle:

TELESCOPE SIGHT BASES

Arrangements have been made for attaching the Winchester telescope sight bases to the U.S. rifle, caliber .22, Model 1922, commonly known as the "Springfield .22 caliber rifle." These bases can be fitted to rifles ordered through this office at an additional cost of \$1.50, provided the telescope is ordered at the same time as the rifle. The Winchester A5 telescope can be furnished complete with bases for \$27. If the bases only are desired, but not the Winchester telescope, the cost of the bases, which is eighty cents, should be added to the above price. Purchasers who already have telescope sights that they desire to have fitted to one of these rifles purchased through this office should forward the bases with the order for the rifle. Care should be taken that the bases are of proper dimensions for this rifle. On account of the taper of the barrel, the front base must be considerably higher than the base usually required for single shot target rifles."

There are a couple of problems with the statement by the DCM quoted in Brophy's book:

1) *The initial order of 2,000 M1922 rifles was entirely allocated to the NRA (but some were diverted; see letter below). Orders were placed with the NRA for these rifles, not the DCM. The DCM was obviously referring to .22 rifles made after this first lot. The M1922MI rifle was developed in 1923; it was initially proposed that purchasers be furnished the old (M1922) rifle and that the M1922MI be reserved for the service; however, this recommendation was not followed, and all subsequent sales (except for a few special rifles) were of the M1922MI and M2.*

2) *Careful reading of the DCM's statement fails to support the conclusion that the drilling & tapping was to be done at Springfield Armory.*

3) *A memo dated Feb. 12, 1923, from Springfield Armory to the DCM contains the following:*

"4. Caliber .22 rifles have not heretofore been equipped for the Winchester #5A telescope, and it is believed that the blocks made by the Winchester Company will have to be specially fitted to fit the contour of the caliber .22 barrel. The estimated cost of so equipping one rifle is \$8.00. If a number of rifles is equipped at the same time, the charge could undoubtedly be reduced. Explicit directions as to the

location of the blocks and the distance apart should be given.

5. As the last of the rifles will be shipped to Washington (NRA Headquarters — Ed.) in the near future, the points covered in this correspondence should be decided upon without delay."

The reply by the DCM, dated Feb. 21, 1923, was as follows:

"2. It is not desired that these rifles be fitted with blocks for the Winchester 5-A telescope as it is believed that the purchaser can have the work done by his local gunsmith or the Winchester Company."

Comparing the \$1.50 price quoted by the DCM with Springfield's \$8 estimate gives a clue as to why this work wasn't done by Springfield: they were just too expensive.

In this case at least, the "dogmatic position" seems to be the correct one.

"USMC"-marked S&W M1917 Revolver

July 1997, issue number 81. Page 81-4. Ltr from A.P., Pennsylvania, The USMC S&W M1917: by the description of the 1917, it is the Commercial Model; the crane and frame 43088 is the assembly number. The Commercial Models had the small S&W logo on the left side of frame and the grips were checkered walnut with a diamond around the grip screw.

The commercial models did not have stamped on the butt, U.S. Army Model 1917, or under the barrel, "United States Property".

There is one good way to find out what he has, that is to contact Mr. Roy Jinks at Smith & Wesson, and Mr. Jinks will tell him what date and who it went to.

W.V.R., Virginia

Set-trigger M1922 Rifle

Surprised to see my rifle, 1922 serial 254, on the cover of *U.S. Martial Arms Collector* for July, 1997. Re: your comment on the set trigger, while it is neither Woody nor Rimkunas, it does appear exactly as that illustrated in Brophy page 142, upper left corner and identified as German type. When I sent you the photos of #254 some 10 years ago, I believe I included a photo of the trigger mechanism. Whoever is responsible for the German type trigger illustrated on page 142 is perhaps responsible for the

trigger mechanism in rifle #254. Might this have been a service (alteration) offered at the time? Perhaps this tidbit could be mentioned in a forthcoming issue of *U.S. Martial Arms Collector* and elicit a response from one of your readers, shedding some light on who and where.

Keith W. Campbell, California

I'm sorry I got your photos mixed up with others and didn't give you proper credit, Keith. Thanks for the information on the trigger mechanism in this gun.

As I stated in an earlier reply, the first 2,000 M1922 rifles were contracted for by the NRA. Here is a breakdown of their known distribution:

Manufactured:	2001
Sold by Springfield Armory:	30
Dir. of Civilian Marksmanship:	2
Ordnance Office, Wash. D.C.:	2
Ft. Benning, Ga.:	3
Frankford Ars.:	2
Aberdeen Proving Ground:	5
Exp. Dept., Springfield Armory:	1
Springfield Armory Museum:	1
National Rifle Assn.:	1935

An unknown number of the NRA guns were repurchased by the Government.

APG was experimenting with set triggers in 1922 and 1923 to determine the fastest set trigger, the fastest firing pin, and the fastest combination of set trigger and firing pin. They used four different set triggers: the German type, the USMC type, type developed by Sgt. Iorger of the Infantry Team, and a modification of Sgt. Iorger's trigger. The documentation I have states that they were mounted in Model of 1903 actions; however, it's conceivable that one of these was later installed in Model of 1922 rifle #254. I recently came across a listing of all small arms on hand at APG in 1931. These included a number of non-standard arms such as a single-shot .22 S&W pistol (no. 7719) and a Magnum Mauser receiver (no. 104412) with Springfield 30" heavy barrel. Unfortunately, not a single Springfield .22 rifle is listed — probably an oversight.

Known Krag Cadet Rifles

What are the four known Cadet rifles serial numbers in the 35,xxx range?

35593 - Private collection

35786 - West Point Museum

35804 - Brophy's book

35??? - ?

T.J.P., Ohio

The fourth number is thought to be 35736. My theory is that there were still two Cadet rifles in the Museum (down one from the number listed in the 1898 catalog) at the time no. 35786 was traded off in 1948. The Museum card was changed to show the serial number of the remaining one (35736) and its accession number. It is not known how no. 35736 got out of the Museum, or where it is now.

M1922 Series of Gallery Practice Rifles

Since writing my M1922 Series article in April, I have been fortunate to have had some informative discussions with advanced collectors, published authors and a Springfield Armory experienced engineer. There is still much to learn and a lot more never documented on the subject of the M1922 rifle series. In way of an addendum to my article, I would like to pass along some observations, opinions and conclusions as a result of this research effort.

To correct a statement in my article, I have confirmed that the bolt throw and extraction cycle of the original Model of 1922 and Model of 1922MI/M1922MI is identical.

The cover photo of the April 1995 issue of *Martial Arms Collector*, No. 72, shows a full military version of the M2. I did not describe this variation in my article because I was not able to confirm a service related origin. Apparently there are enough in circulation to warrant the possibility of an actual military connection. The one I have observed is a M1922MII parkerized NRA that is now mounted in a pre-WW2 NM grade type "C" stock with matched handguard. The Lyman 48 sight was removed and the holes filled with plug screws. The M1905 rear sight was NM quality. So was the remainder of the stock group hardware, except for the M2 issue type buttplate.

The arsenal/armory receiver remarking of M2 conversions apparently did not actually start until some time after October of 1935. I have not been able to confirm or substantiate any type of arsenal/armory receiver remarking for any type of MI conversion which occurred prior to Oct., 1935.

In my article, I stated that I had never en-

countered a Model of 1922 modified to M1. I recently acquired a Model of 1922, serial number 253, blued finish, fitted with a numbered M1 bolt and magazine. The Lyman 48B rear sight is also updated with 1/2 minute adjustment knobs. The receiver is not remarked in any way, and the rifle is mounted in the regular M1922 NRA stock. Also included with this rifle was an original type unmarked double striker M1922 bolt. The source could provide no real history for this rifle. My best assumption is an NRA sales rifle modified at the request of the original owner. The armory may have returned his original parts.

My article also noted the existence of M1922M1 rifles fitted with the M2 bolt and magazine, which were intentionally not remarked on the receiver. Apparently these are both valid and relatively rare versions. The total may only be about two hundred. These rifles were sold through the DCM from about mid 1935, through early 1938, and may even include M1922M1 rifles assembled from parts on hand, as late as 1937. I recently acquired M1922M1 NRA rifle, serial number 19334, blued finish, fitted with a numbered M2 bolt and M2 magazine. Like things can happen in pairs, the receiver is not remarked in any way, and the rifle is mounted in the regular M1922 NRA stock. Also included with this rifle appears to be the original type numbered M1922M1 bolt and magazine. There was no history available on this rifle either, and my conjecture on this piece is a DCM sales rifle, sold this way at the request of the original owner.

My article also stated that finger grooves in NRA stocks do not denote Model of 1922 service issue rifles. A knowledgeable collector has suggested that since both M1 and M2 service issue rifle stocks have finger grooves, this is a good basis for an assumption that the very few Model of 1922 rifles used for service issue had the very few NRA finger groove stocks. Documentary evidence does not support this assumption. In my opinion, the first few NRA stocks had finger grooves because all of the previous Krag and M1903 type "S" stocks to this point in time had finger grooves. All reference texts support that finger grooves were removed after the first lot or so of stocks. One reference states to facilitate checkering the forend. Records also support that probably well over half of the rifles used for

service issue, were from those resold back to the Army by the NRA. These were rifles originally intended for sale and distribution by the NRA. Most Model of 1922 M2 conversion marked rifles are considered to be previous service issue rifles. The one in my collection, serial number 1813A, is still in what appears to be the original issue NRA stock, without finger grooves. It is possible there were issue rifles with finger groove NRA stocks, and just as likely some without.

Fred Ewalt, Connecticut

Thanks for the clarifications and additions, Fred. I've received several very favorable comments on your article.

Recently I came across more documentation on the USMC conversion of M1922M1/M2 rifles to M1903 configuration, so it is well-documented. Whether a particular specimen was converted by the Marines is another issue.

As for early Model of 1922 stocks with finger grooves, I doubt it. In the report of the Infantry School Dept. of Experiment written by Lt. Grosvenor Watkyns, dated Jan. 31, 1923, the forestock is described as "smooth and extra full"; a rifle having stock without finger grooves is illustrated. In specifying the stock for the Mark I .22 rifle in May, 1924, Lee Wright speaking for the Chief of Ordnance stated that it will be "the same as the pistol grip stock now being manufactured for service test at Springfield Armory ..., except that it will be a sporting stock with a forearm in general like that of the present .22 caliber stock but with grasping grooves." The Director of Civilian Marksmanship, Col. Stodter (referring to the Model of 1922), stated that "The stock and butt plate were originally designed for use on the heavy barrel International Match rifle and were later adopted for the .22-caliber rifles made for the National Rifle Association". The barrel groove is wider at points on the M1 stock, so close examination of the inletting fit should reveal whether an M1 NRA stock has been retrofitted to a Model of 1922 barreled action (the .30 NRA Sporter was designed to use the same stock as the M1 with the addition of stock bolts, hence its barrel was made heavier than that of the service rifle).

I have much Ordnance correspondence from 1935 and 1936 on converting and changing the markings

on M1922 and M1922M1 rifles, but it's too complicated to go into here.

M1922M2 Rifle

These are the exact markings as they appear on my M1922M2 #1626A.

**U.S.
SPRINGFIELD
ARMORY
MODEL OF 1922
CAL..22 M2
1626 A**

It came with a well used stock only marked with a P in a square on the pistol grip. The barrel date is SA 5-37. Since this rifle went through armory rebuild, as indicated by the "A", I felt that this gave me a "license" to restock it. At the spring OGCA show, I was very lucky to find four .22 stocks. I've not been able to recall when I ever saw stocks on the "loose" before. Since these items are becoming so scarce, I snapped them up and have spares now. So I put the best matching stock on 1626A and it looks quite nice now.

Since this rifle carried a 1937 barrel and has been through the rebuilt system at SA, I doubt that it could be the one you refer to from the W. Va. University (1926). But I do wish it could be lettered.

When I typed the receiver markings above, I set the typewriter to center the text. The M2 and the A shown on this paper are in the exact locations as on the rifle and were clearly added sometime after the original receiver markings were put on. The A is slanted slightly to the right and has "serifs" on the bottom on the right.

J.W.W., New York

Model of 1922 rifles converted to M2 are very scarce, and you were lucky to find this one.

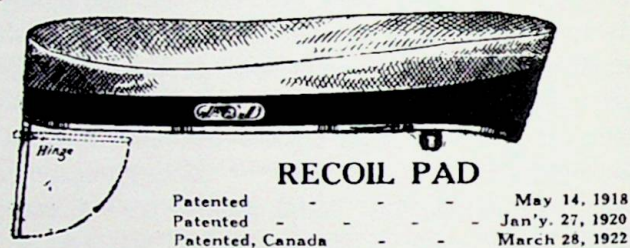
The practice of marking Model of 1922 rifles converted to M2 with "M2" after the model designation and "A" after the serial number was approved in 1935.

Although the records show that Model of 1922 rifle no. 1626 was lost or stolen from the Univ. of W. Va. in 1926, the recovery rate of firearms was much higher then than it is now, and it is quite likely that this rifle was recovered. The fact that although it

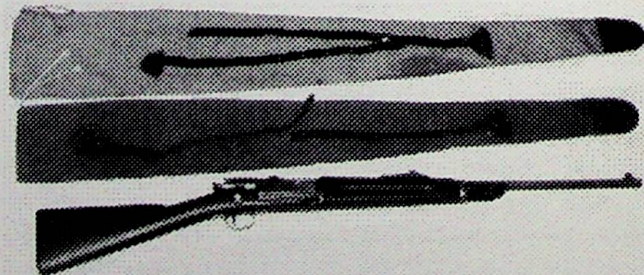
was originally procured through the N.R.A., it was most likely in an Army R.O.T.C. unit, made it subject to the recall of rifles that occurred at the outset of WWII and could account for its conversion to M2.

Kennedy Recoil Pad; Krag Carbine Cases

I have a unique 03 sgfd accessory that I would like to share with the newsletter. The accessory is a soft cushion butt pad that attaches to the steel butt plate. I'm sending photos and instructions that came with the pad. The pad is a very soft leather and was made as a tribute to the Minnesota First Infantry unit. It came with two button snap head screws to replace the original screws. The pad snaps on with ease. I have not tested the butt pad but I'm sure it had to be a great improvement over the steel plate.

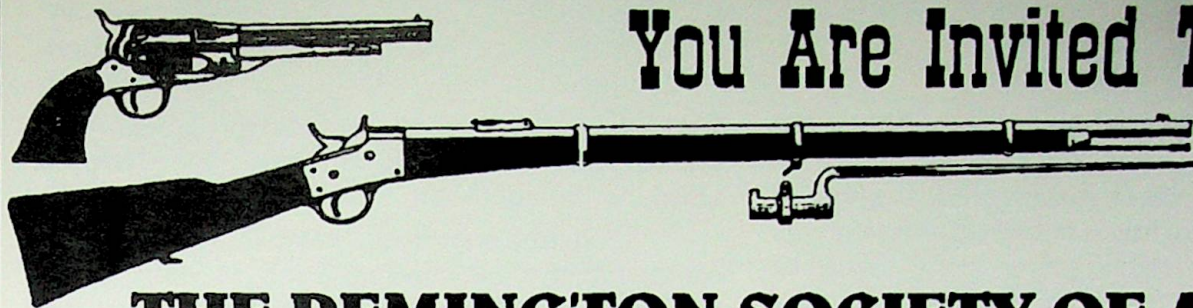


Second, I'm sending a photo of two gun cases. I believe they are for the 30-40 Krag carbine? But I have not found any material on them. The top case in the photo is khaki color and stamped US 1889. The lower case is olive drab color and is stamped US 1901. A Krag carbine fits in both cases like a glove. Both cases have the same type end tie rope and leather strap. The leather strap has a Mauser type gun sling keeper. Do you have any idea what they are or information on them?



D. G. A., Minnesota

Sorry; nothing on either of them. My guess is that the cases were produced for use by rifle teams. ♣



You Are Invited To Join

THE REMINGTON SOCIETY OF AMERICA

An active organization devoted to the collecting and the study of
Remington firearms, ammunition and related artifacts.

- Quarterly, 40 page, well-illustrated Journal
- Annual Meeting at the Sahara Gun Show
- Mini-RSA Meetings throughout the U.S.
- Annual 3-Day Educational Seminar

Dues are \$30 per year, plus a \$5, one-time initiation fee.

Write for application, or call:

REMINGTON SOCIETY OF AMERICA

130 W. South Boundary

Perrysburg, Ohio 43551

(419) 874-2288

Thomas J. Pearce

STUDENT AND COLLECTOR

SPECIALIZING IN

U.S. MAGAZINE RIFLE AND CARBINE

MODELS OF 1892 THROUGH 1899

ACCOUTERMENTS • BAYONETS • CARTRIDGES
MANUALS • UNUSUAL VARIATIONS

(216) 826-0442

P.O. Box 892 Berea, OH 44017

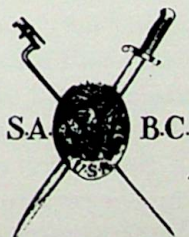
Authentication

U.S. Cavalry Colts

Why not be sure?

John A. Kopec

(916) 472-3021



The Society of
American Bayonet Collectors

- Established 1987
- Covers all bayonets from Colonial to present
- Canadian, British, and European as well as American members

- Quarterly *Journal* with "Mailcall" (Q&A, etc.) column and articles
- Annual Meeting in conjunction with MACA Gun Show — hospitality, banquet, displays, "Show & Tell"

Annual dues \$25 (\$35 outside U.S.). Send request for membership application to:

Roy P. Anderson, Secretary
Society of American Bayonet Collectors
P.O. Box 234
East Islip, N.Y. 11730

Early Rimfire Cartridges and Remington Conversions

While going through the Chief of Ordnance Letters Received (RG156 E21) files for 1868, I came across reports of inventories that were made at the various arsenals in 1868 of Spencer cartridges on hand. Some of these inventories contained interesting information pertaining to the origin and makeup of these cartridges:

Spencer Cartridge Box Labels

Reported by Fort Monroe Arsenal and Allegheny Arsenal in March, 1868.

- 1) Metallic Cartridges For Spencers Rifle or Joslyns Carbine Percussioned by Sharps Process, Manufactured by Sharps & Hankins Philadelphia, Cal. 52.
- 2) Metallic Cartridges For Spencer or Joslyn Rifle, Manufactured by Sage Ammunition Works Middletown Conn. Cal. 52.
- 3) Smith & Wessons Patent Metallic Cartridges For Spencers Rifle or Joslyns Carbine, Manufactured by C. D. Leet, Springfield Mass. Cal. 52.
- 4) Metallic Cartgs. For the Spencer & Joslyn Carbine Navy and Infantry Size, Manufactured by Crittenden & Tibbals South Coventry, Conn. U.S. Cal. 52.
- 4) Metallic Cartridges For the Spencer Rifle New Model Manufactured by Fitch, Van Vechten & Co., Foot of 51st St. North River, N.Y. Cal. 52.
- 5) Metallic Cartridges for Spencer & Joslyns Carbine N° 56 Navy & Infantry Size Manufactured by Crittenden & Tibbals South Coventry, Conn.
- 6) N° 56 Cal. 52 Metallic Cartridges for Spencer or Joslyn Rifle — manufactured by D. C. Sage Middletown Conn. — Smith & Wessons patent April 17, 1860
- 7) Metallic Cartridges for Spencer & Joslyns Carbine N° 56 Navy & Infantry Size manufactured by Crittenden & Tibbals South Coventry, Conn.
- 8) N° 56 Smith & Wessons patent Metallic Cartridges for Spencer or Joslyns Carbine patented April 17, 1860 manufactured by C. D. Leet, Springfield Mass.
- 9) N° 56 Metallic Cartridges for Spencer or Joslyns

Carbine — percussioned by Sharps process patented Dec. 1st, 1863 manufactured by Sharps & Hankins Philadelphia,

A listing submitted by Washington Arsenal on March 14, 1868, contained cal. .54 Spencer rifle cartridges made by Sharps & Hankins; cal. .56 rifle or carbine cartridges made by C. D. Leets; cal. .56 carbine cartridges made by D. C. Sage, Crittenden & Tibbals, and Fitz Vandixon; and cal. .50 cartridges made by Crittenden & Tibbals.

The references to Smith & Wesson and Sharps caught my eye. Sellers in *Sharps Firearms*, pg. 333 states, "In general, the various Sharps companies made ammunition only for the guns they themselves made. The only exception to this is the Navy pistol cartridges made under United States Government contract in 1860". Then on the next page, Sellers states, "The U.S. Government purchased over 2,000,000 rimfire cartridges and 54,600 pinfire cartridges from Sharps & Hankins". Sellers gives the caliber of the Sharps & Hankins Military Rifle as ".54 Sharps & Hankins". He states, "A few of the very early specimens have the marking C. SHARPS PATENT 1859".

Assuming that the cartridge box labels were accurate, Sellers' statement about the Sharps companies (presumably including Sharps & Hankins) made cartridges only for their own guns appeared to be inaccurate. However, in going through Navy ordnance records for the Civil War period, I had found an indication that the Spencer cartridge could be used in later Sharps & Hankins rifles (which, by the way, are frequently referred to in the Navy records as "Model 1859 Sharps", causing a certain amount of confusion). None of the Sharps companies made pinfire arms.

On a somewhat unrelated subject, I found a letter from Rollin White of Lowell, Mass., dated Feb. 8, 1868 (NA RG 156 E 21 1868W F 53) in which he reports that he "has forwarded the altered Colt's pistol as promised and states that the changing of Colt and Remington pistols to make them like it, will be attended with but little expense". Rollin White was, of course, the holder of the patent on bored-through revolver cylinders,

which he had licensed exclusively to Smith & Wesson. However, he refers to some litigation with Smith & Wesson, the result of which might interfere with his performing this work. White had been granted his patent in Apr., 1855, and licensed it to S&W in Nov., 1856; the patent and license were valid until 1872.

All of this lead me to do some research on the Smith & Wesson and Sharps patents mentioned in the Spencer cartridge labels; the results were very enlightening.

The early patent records have been moved to Archives II at College Park, Md., which makes them convenient for me to access.

Smith & Wesson Cartridge Patents

Not having the patent number, I had some trouble finding the S&W patent of April 17, 1860. Using the patent listings, I did find two earlier ones that were of interest. The first was no. 11,496 dated August 8, 1854, for what is essentially a centerfire metallic cartridge:

Fig. 1.

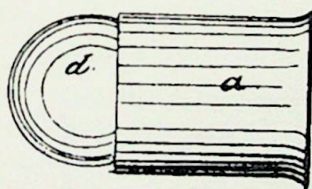
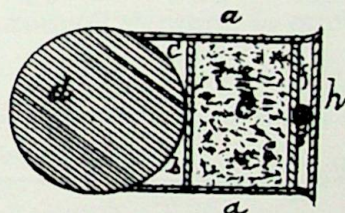


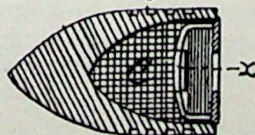
Fig. 2.



In this cartridge, the center priming powder is surrounded by tallow.

The next S&W patent I found was no. 14,147 dated January 22, 1856, for "Improved Primers for Cartridges of Firearms":

Fig. 1.

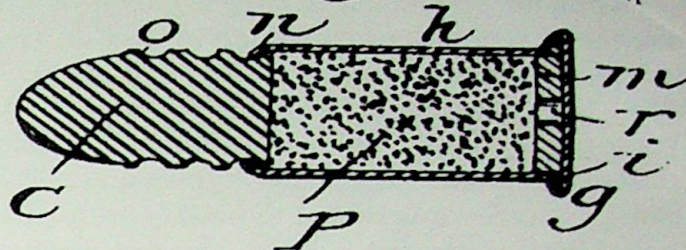


This is obviously an improved version of the Volcanic cartridge. Although it does not qualify as a metallic cartridge, it is again a centerfire design.

Finally, with the assistance of S&W Historian Roy Jinks, I was able to find the Smith & Wesson patent of April 17, 1860 (no. 27,933); the

cartridge it applies to is shown in column.

Fig. 3. If you 'h-



This patent covers a rimfire cartridge, with the fulminate held in place by a paper wad. A large amount of paperwork is included with this patent in the Archives files. Its application was first filed on April 9, 1859. It was turned down twice as interfering with "the application of Christian Sharps of Philadelphia" and the Chandier (French) patent of 1851. It was challenged by Allen & Wheelock as "no improvement on the old French cartridge", and by H. C. Lombard & Co as being "public property".

On October 3, 1859, Smith & Wesson filed a revised claim, to distinguish their cartridge from the French rimfire: "A cartridge in which the fulminate is contained in the hollow annular projecting base substantially as described without being previously inclosed in a hollow metallic ring". The rejections were appealed and challenges overcome, and Smith & Wesson could lay claim to the patent on the rimfire cartridge essentially as we know it; whether Horace Smith and Daniel B. Wesson were the inventors of the rimfire cartridge, can be debated.

The revolver illustrating the application of the S&W rimfire cartridge is shown on the next page.

Early Sharps Metallic Cartridge Patents

While searching for the Sharps patent dated December 1, 1863, I found an earlier patent by Christian Sharps for an improvement in pinfire cartridges for the Lefauchaux, under which the pinfire cartridges cited by Sellers were undoubtedly made. It contains no reference to a Sharps firearm.

The Sharps patent of Dec. 1, 1863, does not cover a cartridge: it describes a machine and method for filling fulminate into cartridge rims.

Remington Revolver Conversions

While discussing (via e-mail) the S&W cartridge patents with Roy Jinks, I mentioned Rollin White's letter of Feb. 8, 1868, and obtained the following responses: "I have a record of the number of Remingtons converted to .46 Rim Fire and marked with the White patent of April 3, 1855." "On page 260 of Neal and Jinks Smith & Wesson 1857 - 1945 it gives a list of the dates and who received the Remington Conversions. The total 4574 were converted of these 4141 were purchased by B. Kittredge and Co. The rest went to J. W. Storrs, 1 to Wexel & DeGress and 31 to M. W. Robinson who took over J. W. Storrs business".

I don't have the Neal & Jinks book; on pg. 60 of History of Smith & Wesson, by Roy Jinks, it states that in February 1868, S&W signed an agreement with Remington allowing the conversion of these revolvers, and that they were produced between Sept. 1868 and April 1869. Remington paid S&W a royalty on each revolver converted. It is further stated that S&W inspected the revolvers and was responsible for their distribution.

I was hoping that some of this might lead to an answer to the question of why there is no

record of the Army procuring Remington conversions. When Roy pointed out the S&W information on the Remington conversions, I thought that perhaps the revolvers converted were obtained from the trade of Remington single-shot pistols for Remington Army revolvers; however, this deal was not signed until Feb. 25, 1871.

Another item I came across in the Ordnance files gave me a better understanding of why Remington would trade new pistols for used revolvers. In July, 1866, Warren Fisher offered to exchange 20,000 to 50,000 new Spencer Model 1865 carbines for old ones, without charge. He made this offer because he had an order for that many carbines, which would expire before he had time to manufacture them; he could fill that order if he could obtain the guns from the Army. Possibly Remington was in the same position in 1871.

There are still many questions to be answered about the early metallic cartridges and arms, but I gained a better understanding of this period from a study of the patent files; and especially, a better appreciation for the key position of Smith & Wesson. 4

Fig. 1.

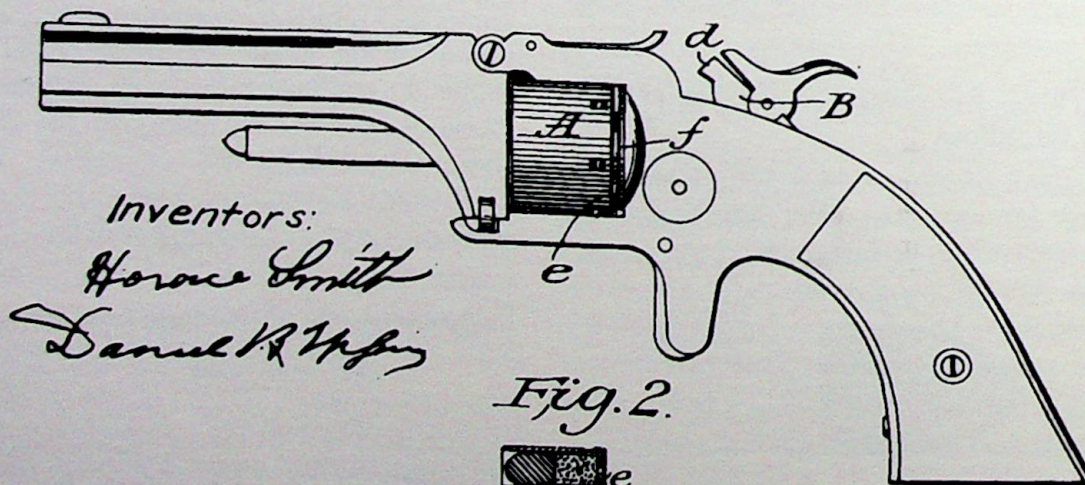
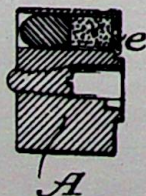


Fig. 2.



Guns "Lettered" During Current Period

The following firearms were documented during the period covered by this issue. If you would like to get in touch with the person a letter was written for, send us your message together with a stamped envelope with blank address. We will affix a label and forward your message. There is no guarantee that you will receive a reply, of course; but we write quite a few letters for dealers, who would no doubt like to hear from someone interested in a particular gun. Make sure that your message contains the serial number and model of the gun you are interested in, and that you furnish separate messages and envelopes if you are interested in more than one. THIS OFFER, FOR GUNS IN THIS ISSUE, EXPIRES ON JANUARY 1, 1998.

DCM RIFLE & PISTOL SALES

7989	M1922MI	E. M. Brown
19597	M1922MI NRA	O. R. Stevenson
1266875	M1903 Spt	W. E. Winterhalder
1277784	M1903 Spt	G. E. Pidge
1295074	M1903 Spt	E. M. Brown
1343149	M1903 NM	D. R. Maxwell

CIVIL WAR

18861	Burnside carbine	Co. C, 12th New York Vol. Cav.
7944	Colt Revolving Rifle	Co. M, 9th Illinois Vol. Cav.
7508	Henry rifle	Co. C, 3rd U.S. Veteran Vol. Inf.
8768	Henry rifle	Co. I, 3rd U.S. Veteran Vol. Inf.
1102	Sharps & Hankins carbine	Co. F, 4th New York Vol. Cav.
47150	Sharps carbine	Co. C, 2nd Illinois Vol. Cav.
93195	Sharps carbine	Co. I, 13th New York Vol. Cav.
51654	Spencer carbine	Co. C, 7th Indiana Vol. Cav.

SPANISH-AMERICAN WAR

2186	Colt Artillery revolver	Trp G, 1st U.S. Vol. Cav.
------	-------------------------	---------------------------

ORDNANCE DEPT./U.S. ARMY

137661	Colt .380 pistol	Brig. Gen. Wm. T. Thurman
12221	M1873 carbine	Trp H, 7th Cav.
21209	M1873 carbine	Recovered from Crow Indians
142975	M1879 carbine	Trp L, 7th Cav.
316890	M1884 rifle	Co. C, 13th Inf.
1760	M1 rifle	Co. F, 29th Inf.

The .45-70 Springfield Book II 1865-1893

Deluxe Edition: Signed & Serial No.

Need Xerox of SN page in Book I to order.

Price: (pre-1998) \$89.50+\$4.50 S/H (U.S.)

(1/1/98) \$95.00+\$4.50 S/H (U.S.)

Standard Edition:

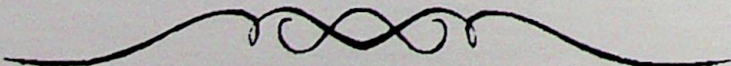
Price: (pre-1998) \$76.50+\$4.50 S/H (U.S.)

(1/1/98) \$82.00+\$4.50 S/H (U.S.)

Send check in U.S. dollars to:

**Frasca Publishing • 3378 Baker Road
Springfield, OH 45504**

1909 Springfield Armory Catalog Arms & Accouterments


**182 Page Museum Catalog
Updated & Improved**

Price \$16.00 + \$3.00 S/H. Dealers Inquire.

Frasca Publishing, 3378 Baker Rd.,
Springfield, Ohio 45504 937-399-5002

Miscellaneous Model 1917 Rifles
Cited in Ordnance Dept. and Bureau of Prisons Records

Serial	Model	MMDDYY	Usage	Serial	Model	MMDDYY	Usage
237	E	062418	LOWEST NUMBER IN 322ND INF	31599	W	020918	317TH INF CAMP LEE
315	W	070118	324TH INF CAMP SEVIER	32641	W	020418	317TH INF CAMP LEE
416	R	092435	US NW PENITENTIARY LEWISBURG	"	W	020918	317TH INF CAMP LEE
618	R	040918	PETERS CTGE CO AMMO TESTING	33241	W	020418	317TH INF CAMP LEE
660	R	092435	US NW PENITENTIARY LEWISBURG	"	W	020918	317TH INF CAMP LEE
742	R	092435	US NW PENITENTIARY LEWISBURG	34492	R	082718	CO E 121ST INF CAMP WHEELER GA
783	R	092435	US NW PENITENTIARY LEWISBURG	34554	W	020918	317TH INF CAMP LEE
1012	R	092435	US NW PENITENTIARY LEWISBURG	34705	W	020918	317TH INF CAMP LEE
1014	R	092435	US NW PENITENTIARY LEWISBURG	34708		072318	CAMP DEVENS (STOCK TEST)
1067	R	092435	US NW PENITENTIARY LEWISBURG	35467	E	011718	CO H 350TH INF
1171	R	092435	US NW PENITENTIARY LEWISBURG	35550	W	020418	317TH INF CAMP LEE
1189	W	070118	324TH INF CAMP SEVIER	"	W	020918	317TH INF CAMP LEE
1440	R	092435	US NW PENITENTIARY LEWISBURG	35619		072318	CAMP DEVENS (STOCK TEST)
1481	R	092435	US NW PENITENTIARY LEWISBURG	36944	W	020418	317TH INF CAMP LEE
1492	R	092435	US NW PENITENTIARY LEWISBURG	"	W	020918	317TH INF CAMP LEE
1801	R	092435	US NW PENITENTIARY LEWISBURG	37296	W	020918	317TH INF CAMP LEE
1851	W	022018	309TH FA (BROKEN XTRACTOR)	37596	E	050118	WATERTOWN ARS (TESTED)
1898	R	092435	US NW PENITENTIARY LEWISBURG	39096	W	020918	317TH INF CAMP LEE
2231	R	092435	US NW PENITENTIARY LEWISBURG	39184	E	013118	CO F 313TH AMMO TRAIN CAMP DODG
2242	R	092435	US NW PENITENTIARY LEWISBURG	39261	W	020918	317TH INF CAMP LEE
2391		051131	APG	39447	W	020918	317TH INF CAMP LEE
2400	R	092435	US NW PENITENTIARY LEWISBURG	39945	W	020918	317TH INF CAMP LEE
2491	R	092435	US NW PENITENTIARY LEWISBURG	39946	W	020418	317TH INF CAMP LEE
2588	E	061918	LOWEST NUMBER IN 321ST INF	40687	W	020918	317TH INF CAMP LEE
2762		051131	APG	41621	E	012318	CO D 313TH AMMO TRAIN CAMP DODG
3337	W	091317	WRA CO VELOCITY TEST	42729	W	020918	317TH INF CAMP LEE
3381		051131	APG	43080	E	050118	WATERTOWN ARS (TESTED)
3985	E	062718	LOWEST NUMBER IN 323RD INF	44530	E	050118	WATERTOWN ARS (TESTED)
4050	W	051518	SA (TARGETED)	44772	W	020918	317TH INF CAMP LEE
4052	W	051518	SA (TARGETED)	45492	W	020918	317TH INF CAMP LEE
4053	W	051518	SA (TARGETED)	45871	W	020418	317TH INF CAMP LEE
4056	W	051518	SA (TARGETED)	"	W	020918	317TH INF CAMP LEE
4059	W	051518	SA (TARGETED)	45928		072318	CAMP DEVENS (STOCK TEST)
thru				46582	W	020918	317TH INF CAMP LEE
4064	W	051518	SA (TARGETED)	47559	E	042318	REVIEWED BY ENGR BUREAU
4228		072318	CAMP DEVENS (STOCK TEST)	48155		072318	CAMP DEVENS (STOCK TEST)
4311	E	021118	CO E 342ND INF CAMP GRANT	50018	R	042518	55TH PIONEER INF
4622	R	092435	US NW PENITENTIARY LEWISBURG	50430		072318	CAMP DEVENS (STOCK TEST)
5322	R	092435	US NW PENITENTIARY LEWISBURG	51518	E	042318	REVIEWED BY ENGR BUREAU
6746	W	021218	309TH FA CAMP DIX	"	E	050118	WATERTOWN ARS (TESTED)
8482	W	020418	317TH INF CAMP LEE	52850		072318	CAMP DEVENS (STOCK TEST)
"	W	020918	317TH INF CAMP LEE	53088	E	042318	REVIEWED BY ENGR BUREAU
9294	E	050118	WATERTOWN ARS (TESTED)	"	E	050118	WATERTOWN ARS (TESTED)
9478	W	040918	PETERS CTGE CO AMMO TESTING	53205	E	050118	WATERTOWN ARS (TESTED)
9499	W	020418	317TH INF CAMP LEE	55885	E	042318	REVIEWED BY ENGR BUREAU
"	W	020918	317TH INF CAMP LEE	"	E	050118	WATERTOWN ARS (TESTED)
9605		041318	CO A 309TH ENGR	60227		010618	CO F 345TH INF CAMP PIKE
9954	R	111022	AUGUSTA ARS (OVERHAULED)	60695	E	050118	WATERTOWN ARS (TESTED)
10600	E	070118	324TH INF CAMP SEVIER	60795	E	042318	REVIEWED BY ENGR BUREAU
10989	E	061918	321ST INF CAMP SEVIER	"	E	050118	WATERTOWN ARS (TESTED)
11400	E	070118	324TH INF CAMP SEVIER	61550	E	042318	REVIEWED BY ENGR BUREAU
11740	W	020418	317TH INF CAMP LEE	"	E	050118	WATERTOWN ARS (TESTED)
"	W	020918	317TH INF CAMP LEE	62632	E	013018	CAPT BIZZELL TO INSP DIV
12117	W	082135	US SW REFORMATRY EL RENO TO RIA	"	E	050118	WATERTOWN ARS (TESTED)
12500	E	070118	324TH INF CAMP SEVIER	62745	E	050118	WATERTOWN ARS (TESTED)
13031	W	042018	TO SMALL ARMS SECT	63804	R	092118	CAMP FREMONT
13115	W	022018	309TH FA (BROKEN XTRACTOR)	65180	E	042318	REVIEWED BY ENGR BUREAU
13811	W	021218	309TH FA CAMP DIX	65843	W	020118	26TH ENGR CAMP DIX
13847	W	021218	309TH FA CAMP DIX	66718	W	020118	26TH ENGR CAMP DIX
16781	E	042318	REVIEWED BY ENGR BUREAU	68129	W	020918	317TH INF CAMP LEE
"	E	050118	WATERTOWN ARS (TESTED)	69117		010618	CO F 345TH INF CAMP PIKE
17221	W	020918	317TH INF CAMP LEE	69273	E	061619	E J MUNCE (TURNED IN)
17965	W	020918	317TH INF CAMP LEE	69460	W	020418	317TH INF CAMP LEE
18652	W	020918	317TH INF CAMP LEE	"	W	020918	317TH INF CAMP LEE
18893	W	020918	317TH INF CAMP LEE	69800	E	070118	324TH INF CAMP SEVIER
19062	W	020918	317TH INF CAMP LEE	69806	E	061918	HIGHEST NUMBER IN 321ST INF
19205	W	020918	317TH INF CAMP LEE	70217	W	020718	26TH ENGR CAMP DIX
19243	E	012318	CO D 313TH AMMO TRAIN CAMP DODG	"	W	021118	26TH ENGR CAMP DIX
19597	W	020418	317TH INF CAMP LEE	70694		010618	CO F 345TH INF CAMP PIKE
"	W	020918	317TH INF CAMP LEE	71515		072318	CAMP DEVENS (STOCK TEST)
21031	W	020918	317TH INF CAMP LEE	72810	W	022018	309TH FA (BROKEN XTRACTOR)
21341	W	020918	317TH INF CAMP LEE	74744	W	082135	US SW REFORMATRY EL RENO TO RIA
23638	E	042318	REVIEWED BY ENGR BUREAU	75873		072318	CAMP DEVENS (STOCK TEST)
"	E	050118	WATERTOWN ARS (TESTED)	77800	E	070118	324TH INF CAMP SEVIER
23715	E	042318	REVIEWED BY ENGR BUREAU	81691	W	020718	26TH ENGR CAMP DIX
24140	E	042318	REVIEWED BY ENGR BUREAU	"	W	021118	26TH ENGR CAMP DIX
25050	E	011718	CO H 350TH INF	81919	W	020718	26TH ENGR CAMP DIX
25102	W	020418	317TH INF CAMP LEE	"	W	021118	26TH ENGR CAMP DIX
"	W	020918	317TH INF CAMP LEE	82222		072318	CAMP DEVENS (STOCK TEST)
25361	E	040918	PETERS CTGE CO AMMO TESTING	82878	E	080518	CO B 343RD INF CAMP GRANT
26394	W	020418	317TH INF CAMP LEE	83489	W	020718	26TH ENGR CAMP DIX
"	W	020918	317TH INF CAMP LEE	"	W	021118	26TH ENGR CAMP DIX
28818	E	041818	CO B 312TH INF CAMP DIX	83758	W	021218	309TH FA CAMP DIX
29110	E	050118	WATERTOWN ARS (TESTED)	83770	W	020718	26TH ENGR CAMP DIX

Model Code(s): E = Eddystone R = Remington W = Winchester

Serial	Model	MMDDYY	Usage	Serial	Model	MMDDYY	Usage
83770	W	021118	26TH ENGR CAMP DIX	137324	W	031518	FA ACCURACY TEST
84580	W	021218	309TH FA CAMP DIX	137575	R	111022	AUGUSTA ARS (OVERHAULED)
85212	W	020718	26TH ENGR CAMP DIX	137668	W	111022	AUGUSTA ARS (OVERHAULED)
"	W	021118	26TH ENGR CAMP DIX	141152	W	031518	FA ACCURACY TEST
85257		010618	CO F 345TH INF CAMP PIKE	141947		072318	CAMP DEVENS (STOCK TEST)
85664	W	020718	26TH ENGR CAMP DIX	142960		072318	CAMP DEVENS (STOCK TEST)
"	W	021118	26TH ENGR CAMP DIX	143362		072318	CAMP DEVENS (STOCK TEST)
85843	W	020118	26TH ENGR CAMP DIX	143483	E	042318	REVIEWED BY ENGR BUREAU
85899	W	020718	26TH ENGR CAMP DIX	"	E	050118	WATERTOWN ARS (TESTED)
"	W	021118	26TH ENGR CAMP DIX	144660	R	081718	CAMP SEVIER
86017	W	020718	26TH ENGR CAMP DIX	154423	R	081718	CAMP SEVIER
"	W	021118	26TH ENGR CAMP DIX	158032		072318	CAMP DEVENS (STOCK TEST)
86160	W	022018	309TH FA (BROKEN XTRACTOR)	158474		072318	CAMP DEVENS (STOCK TEST)
86636	W	020718	26TH ENGR CAMP DIX	163014	R	082818	CO K 122ND INF CAMP WHEELER GA
"	W	021118	26TH ENGR CAMP DIX	163040	R	083118	CO E 122ND INF CAMP GREENE NC
86718	W	020118	26TH ENGR CAMP DIX	164226	W	030723	APG
87459	W	020718	26TH ENGR CAMP DIX	166503		072318	CAMP DEVENS (STOCK TEST)
"	W	021118	26TH ENGR CAMP DIX	166935		072318	CAMP DEVENS (STOCK TEST)
87763	W	020718	26TH ENGR CAMP DIX	167112	W	091418	CO D 4TH PIONEER INF
"	W	021118	26TH ENGR CAMP DIX	167808	R	071918	SA DAILY FUNCTION TEST
88414	W	022018	309TH FA (BROKEN XTRACTOR)	168926		072318	CAMP DEVENS (STOCK TEST)
89700	E	070118	324TH INF CAMP SEVIER	169560		072318	CAMP DEVENS (STOCK TEST)
89708	R	062818	SA DAILY FUNCTION TEST	170221		072318	CAMP DEVENS (STOCK TEST)
91473	E	020818	306TH AMMO TRAIN CAMP JACKSON	170712		072318	CAMP DEVENS (STOCK TEST)
"	E	042318	REVIEWED BY ENGR BUREAU	170942	R	082718	CO G 121ST INF CAMP WHEELER GA
92905		072318	CAMP DEVENS (STOCK TEST)	171156	E	050118	WATERTOWN ARS (TESTED)
96735		072318	CAMP DEVENS (STOCK TEST)	171280		072318	CAMP DEVENS (STOCK TEST)
96944		072318	CAMP DEVENS (STOCK TEST)	171400		072318	CAMP DEVENS (STOCK TEST)
97413		072318	CAMP DEVENS (STOCK TEST)	171650		072318	CAMP DEVENS (STOCK TEST)
98516		072318	CAMP DEVENS (STOCK TEST)	171917		072318	CAMP DEVENS (STOCK TEST)
98667		072318	CAMP DEVENS (STOCK TEST)	172147		072318	CAMP DEVENS (STOCK TEST)
99877		072318	CAMP DEVENS (STOCK TEST)	172319		072318	CAMP DEVENS (STOCK TEST)
100187	E	032318	CO G 366TH INF CAMP DODGE	172688		072318	CAMP DEVENS (STOCK TEST)
"		042618	366TH INF CAMP DODGE	173168		072318	CAMP DEVENS (STOCK TEST)
"	E	050118	WATERTOWN ARS (TESTED)	173258	R	082618	WAREHOUSE CAMP WHEELER GA
"	E	052018	WATERTOWN ARS	173567		072318	CAMP DEVENS (STOCK TEST)
"	E	052818	CAMP DODGE (FAILED)	173984		072318	CAMP DEVENS (STOCK TEST)
100513		072318	CAMP DEVENS (STOCK TEST)	174008		072318	CAMP DEVENS (STOCK TEST)
100854	E	051518	CAMP HANCOCK STRIKER TEST	175310	R	083118	CO G 122ND INF CAMP GREENE NC
100948	E	081718	CO K 133RD INF CAMP CODY	175959	W	030723	APG
101193		072318	CAMP DEVENS (STOCK TEST)	178095	W	100620	USAT LAKE LOUISE (DAMAGED)
101374	E	012518	CO G 345TH INF CAMP PIKE	178108	W	030723	APG
101419		072318	CAMP DEVENS (STOCK TEST)	178527	E	042318	REVIEWED BY ENGR BUREAU
101656		072318	CAMP DEVENS (STOCK TEST)	"	E	050118	WATERTOWN ARS (TESTED)
103205	E	012518	CO G 345TH INF CAMP PIKE	179200	R	082718	CO M 122ND INF CAMP WHEELER GA
104125	E	012518	CO G 345TH INF CAMP PIKE	179267	W	111022	AUGUSTA ARS (OVERHAULED)
106178	E	012518	CO G 345TH INF CAMP PIKE	179392		051131	APG
106843		101618	CO F 345TH INF CAMP PIKE	179463	R	111022	AUGUSTA ARS (OVERHAULED)
108282		042618	366TH INF CAMP DODGE	180260	W	030723	APG
"	E	050118	WATERTOWN ARS (TESTED)	180398		051131	APG
"	E	052018	WATERTOWN ARS	181745		051131	APG
"	E	052818	CAMP DODGE (FAILED)	182125	W	030723	APG
112595	R	042718	CO B 114TH INF CAMP MCCLELLAN	182391	W	081518	SMALL ARMS FIRING SCHOOL
113575	E	042018	CAMP FUNSTON	182442		051131	APG
114415	W	081318	SPECIAL STOCK TEST	182803	W	081518	SMALL ARMS FIRING SCHOOL
"	W	081518	LAMINATED STOCK TEST	183529	W	082135	US SW REFORMATRY EL RENO TO RIA
115157	E	081318	SPECIAL STOCK TEST	184908	W	082135	US SW REFORMATRY EL RENO TO RIA
"	E	081518	LAMINATED STOCK TEST	185054	E	011918	REM ARMS TO EQUIP DIV
115283	W	111022	AUGUSTA ARS (OVERHAULED)	185318	W	082135	US SW REFORMATRY EL RENO TO RIA
116343		072318	CAMP DEVENS (STOCK TEST)	185809	W	082018	SMALL ARMS FIRING SCHOOL
118190	E	040318	CO K 110TH INF CAMP HANCOCK	187586	E	060818	CO L 1ST PIONEER INF
"	E	042318	REVIEWED BY ENGR BUREAU	188284	W	082135	US SW REFORMATRY EL RENO TO RIA
"	E	050118	WATERTOWN ARS (TESTED)	188507	W	082135	US SW REFORMATRY EL RENO TO RIA
118308		072318	CAMP DEVENS (STOCK TEST)	188772	W	082135	US SW REFORMATRY EL RENO TO RIA
118637	R	042318	REVIEWED BY ENGR BUREAU	189126	W	082018	SMALL ARMS FIRING SCHOOL
120190		072318	CAMP DEVENS (STOCK TEST)	189642	W	082135	US SW REFORMATRY EL RENO TO RIA
120735	E	042318	REVIEWED BY ENGR BUREAU	191086	W	082135	US SW REFORMATRY EL RENO TO RIA
"	E	050118	WATERTOWN ARS (TESTED)	191145	W	082018	SMALL ARMS FIRING SCHOOL
120737	E	020918	CO B 320TH MG BATTN	192838	R	082718	CO C 121ST INF CAMP WHEELER GA
122301	E	011018	MIDVALE TO OO	193529	R	082618	WAREHOUSE CAMP WHEELER GA
122716	R	111022	AUGUSTA ARS (OVERHAULED)	194437	R	111022	AUGUSTA ARS (OVERHAULED)
123228	R	042418	HQ CO 114TH INF CAMP MCCLELLAN	194664	R	082618	WAREHOUSE CAMP WHEELER GA
123924		051131	APG	195378	R	082618	WAREHOUSE 106TH AMMO TRAIN
124464	W	030723	APG	195603	R	083118	CO H 122ND INF CAMP GREENE NC
124486		072318	CAMP DEVENS (STOCK TEST)	195634	R	082618	WAREHOUSE SUP CO 121ST INF
125649	E	042318	REVIEWED BY ENGR BUREAU	196799	E	111022	AUGUSTA ARS (OVERHAULED)
"	E	050118	WATERTOWN ARS (TESTED)	197122	R	082618	WAREHOUSE CAMP WHEELER GA
125899		051131	APG	197397	R	111022	AUGUSTA ARS (OVERHAULED)
129268	R	042718	CO B 114TH INF CAMP MCCLELLAN	197405	R	082718	CO D 122ND INF CAMP WHEELER GA
131042		060718	104TH AMMO TRAIN FT MCCLELLAN	197534	R	082718	CO C 122ND INF CAMP WHEELER GA
133031	W	042518	BATTY B 324TH ART CAMP SHERMAN	200336	R	082718	CO C 122ND INF CAMP WHEELER GA
134277		072318	CAMP DEVENS (STOCK TEST)	200487	R	082618	WAREHOUSE CAMP WHEELER GA
135049	R	082618	106TH AMMO TRAIN CAMP WHEELER	200656	W	081518	SMALL ARMS FIRING SCHOOL
136614		072318	CAMP DEVENS (STOCK TEST)	201425	R	082618	WAREHOUSE CAMP WHEELER GA

Model Code(s): E = Eddystone R = Remington W = Winchester

Model 1917 Rifles (Cont'd)

Serial	Model	MMDDYY	Usage	Serial	Model	MMDDYY	Usage
201843	R	082618	WAREHOUSE CAMP WHEELER GA	218215	R	082618	WAREHOUSE CAMP WHEELER GA
202959	R	083118	CO H 122ND INF CAMP GREENE NC	218231	R	082618	WAREHOUSE 106TH AMMO TRAIN
202992	E	050118	WATERTOWN ARS (TESTED)	218302	R	082718	CO D 122ND INF CAMP WHEELER GA
203080	R	082618	WAREHOUSE CAMP WHEELER GA	218329	R	083118	CO F 122ND INF CAMP GREENE NC
203116	R	083018	WAREHOUSE CAMP WHEELER GA	218418	R	082618	WAREHOUSE CAMP WHEELER GA
204403	R	082618	WAREHOUSE 106TH AMMO TRAIN	218456	R	082718	CO F 121ST INF CAMP WHEELER GA
204681	R	083018	WAREHOUSE CAMP WHEELER GA	218547	R	082618	WAREHOUSE 106TH AMMO TRAIN
204875	R	083118	CO G 122ND INF CAMP GREENE NC	218750	R	082718	CO M 122ND INF CAMP WHEELER GA
205313	R	082618	WAREHOUSE CAMP WHEELER GA	218840	R	082618	WAREHOUSE CAMP WHEELER GA
206107	R	082718	CO E 121ST INF CAMP WHEELER GA	218841	R	083018	WAREHOUSE CAMP WHEELER GA
206111	R	082718	CO I 122ND INF CAMP WHEELER GA	218896	R	083118	CO F 122ND INF CAMP GREENE NC
206404	R	082718	CO I 122ND INF CAMP WHEELER GA	219236	R	082618	WAREHOUSE SUP CO 121ST INF
206530	E	041018	CO E 309TH INF	219303	R	083118	CO G 122ND INF CAMP GREENE NC
206756	R	082618	WAREHOUSE SUP CO 121ST INF	219543	R	082718	CO C 122ND INF CAMP WHEELER GA
207273	R	082718	CO D 122ND INF CAMP WHEELER GA	219775	R	082618	CO A 122ND INF CAMP WHEELER GA
207347	R	082718	CO I 122ND INF CAMP WHEELER GA	219818	R	083018	WAREHOUSE CAMP WHEELER GA
207633	W	081518	SMALL ARMS FIRING SCHOOL	219889	R	083018	WAREHOUSE CAMP WHEELER GA
209139	R	082718	CO G 121ST INF CAMP WHEELER GA	219950	E	081718	STOCK BOLT TEST
209444	R	083018	WAREHOUSE CAMP WHEELER GA	219976	R	082618	WAREHOUSE 121ST INF CMP WHEELER
209564	W	081518	SMALL ARMS FIRING SCHOOL	220026	R	082618	WAREHOUSE SUP CO 121ST INF
209687	R	082718	CO E 121ST INF CAMP WHEELER GA	220153	R	083118	CO G 122ND INF CAMP GREENE NC
210219	E	042318	REVIEWED BY ENGR BUREAU	220278	R	082718	CO C 122ND INF CAMP WHEELER GA
"	E	050118	WATERTOWN ARS (TESTED)	220439	R	082618	WAREHOUSE SUP CO 121ST INF
210469	R	082618	WAREHOUSE CAMP WHEELER GA	220504	R	082618	WAREHOUSE 106TH AMMO TRAIN
210615	R	082618	WAREHOUSE 106TH AMMO TRAIN	220629	R	082618	WAREHOUSE SUP CO 121ST INF
210616	R	082618	WAREHOUSE 106TH AMMO TRAIN	220661	R	082718	CO C 122ND INF CAMP WHEELER GA
210753	R	083118	CO G 122ND INF CAMP GREENE NC	220696	R	083018	WAREHOUSE CAMP WHEELER GA
211081	R	083118	CO G 122ND INF CAMP GREENE NC	220856	R	083118	CO F 122ND INF CAMP GREENE NC
211171	R	083018	WAREHOUSE CAMP WHEELER GA	220923	R	083118	CO G 122ND INF CAMP GREENE NC
211362	W	082018	SMALL ARMS FIRING SCHOOL	220955	R	082718	CO E 121ST INF CAMP WHEELER GA
211384	R	082718	CO L 122ND INF CAMP WHEELER GA	221283	R	083018	WAREHOUSE CAMP WHEELER GA
211525	R	082718	CO L 122ND INF CAMP WHEELER GA	221313	R	083118	CO E 122ND INF CAMP GREENE NC
212008	R	082618	WAREHOUSE CAMP WHEELER GA	221375	R	082618	WAREHOUSE CAMP WHEELER GA
212397	R	083118	CO H 122ND INF CAMP GREENE NC	221469	R	082618	WAREHOUSE CAMP WHEELER GA
212402	R	083118	CO G 122ND INF CAMP GREENE NC	221590	R	082618	WAREHOUSE SUP CO 121ST INF
212403	R	082618	WAREHOUSE SUP CO 121ST INF	221669	R	082718	CO A 121ST INF CAMP WHEELER GA
212420	W	082018	SMALL ARMS FIRING SCHOOL	221679	R	082618	WAREHOUSE 121ST INF CMP WHEELER
212489	R	082618	WAREHOUSE 121ST INF CMP WHEELER	221681	R	062318	CAMP BOWIE (FOUND ON RANGE)
212666	R	082618	WAREHOUSE CAMP WHEELER GA	221755	R	083118	CO G 122ND INF CAMP GREENE NC
213003	R	082618	WAREHOUSE SUP CO 121ST INF	221996	R	083118	CO F 122ND INF CAMP GREENE NC
213067	R	082618	WAREHOUSE CAMP WHEELER GA	222161	R	083118	CO E 122ND INF CAMP GREENE NC
213072	R	083018	WAREHOUSE CAMP WHEELER GA	222270	R	083018	WAREHOUSE CAMP WHEELER GA
213298	R	082618	WAREHOUSE SUP CO 121ST INF	222510	R	082618	WAREHOUSE CAMP WHEELER GA
213358	R	082618	WAREHOUSE CAMP WHEELER GA	222578	R	083118	CO H 122ND INF CAMP GREENE NC
213364	R	083118	CO F 122ND INF CAMP GREENE NC	222864	R	082718	CO F 121ST INF CAMP WHEELER GA
213472	R	083118	CO G 122ND INF CAMP GREENE NC	222926	R	082618	WAREHOUSE 121ST INF CMP WHEELER
213537	R	082618	WAREHOUSE SUP CO 121ST INF	223661	R	083118	CO F 122ND INF CAMP GREENE NC
214048	R	083118	CO F 122ND INF CAMP GREENE NC	224093	R	083118	CO G 122ND INF CAMP GREENE NC
214116	W	081518	SMALL ARMS FIRING SCHOOL	224097	R	082618	WAREHOUSE CAMP WHEELER GA
214183	R	062818	SA DAILY FUNCTION TEST	224108	R	082618	WAREHOUSE 106TH AMMO TRAIN
214947	R	083118	CO E 122ND INF CAMP GREENE NC	224177	R	082618	WAREHOUSE CAMP WHEELER GA
215077	W	081518	SMALL ARMS FIRING SCHOOL	224227	R	082618	WAREHOUSE CAMP WHEELER GA
215150	R	083118	CO E 122ND INF CAMP GREENE NC	224743	R	083118	CO F 122ND INF CAMP GREENE NC
215166	R	082718	CO F 121ST INF CAMP WHEELER GA	225087	R	083118	CO F 122ND INF CAMP GREENE NC
215192	W	081518	SMALL ARMS FIRING SCHOOL	225196	R	082618	WAREHOUSE SUP CO 121ST INF
215812	R	082618	WAREHOUSE SUP CO 121ST INF	225459	R	082618	CO F 106TH AMMO TRAIN
215904	R	083018	WAREHOUSE CAMP WHEELER GA	225570	R	083118	CO E 122ND INF CAMP GREENE NC
216181	R	083018	WAREHOUSE CAMP WHEELER GA	225720	R	083118	CO E 122ND INF CAMP GREENE NC
216297	R	082718	CO B 122ND INF CAMP WHEELER GA	225851	R	082618	WAREHOUSE 122ND INF CMP WHEELER
216363	R	082618	WAREHOUSE CAMP WHEELER GA	225921	R	082718	CO C 121ST INF CAMP WHEELER GA
216404	R	083018	WAREHOUSE CAMP WHEELER GA	225922	R	083018	WAREHOUSE CAMP WHEELER GA
216427	R	082618	WAREHOUSE SUP CO 121ST INF	225929	R	082618	WAREHOUSE CAMP WHEELER GA
216460	W	081518	SMALL ARMS FIRING SCHOOL	225964	R	082718	CO I 122ND INF CAMP WHEELER GA
216498	R	082618	WAREHOUSE CAMP WHEELER GA	226328	R	082618	CO F 106TH AMMO TRAIN
216508	R	082618	WAREHOUSE 121ST INF CMP WHEELER	226344	R	082818	CO K 122ND INF CAMP WHEELER GA
216564	R	082718	CO C 122ND INF CAMP WHEELER GA	226540	R	083018	WAREHOUSE CAMP WHEELER GA
216581	R	083118	CO E 122ND INF CAMP GREENE NC	226752	R	062318	CAMP BOWIE (FOUND ON RANGE)
216603	R	083018	WAREHOUSE CAMP WHEELER GA	226812	R	083018	WAREHOUSE CAMP WHEELER GA
216737	R	083118	CO E 122ND INF CAMP GREENE NC	226883	R	083018	WAREHOUSE CAMP WHEELER GA
216740	R	083118	CO H 122ND INF CAMP GREENE NC	227182	R	082618	WAREHOUSE CAMP WHEELER GA
216752	R	082618	WAREHOUSE 121ST INF CMP WHEELER	228093	R	082618	WAREHOUSE 106TH AMMO TRAIN
216773	R	082618	WAREHOUSE 106TH AMMO TRAIN	228196	R	083118	CO H 122ND INF CAMP GREENE NC
217046	R	082618	WAREHOUSE CAMP WHEELER GA	228210	R	082818	CO K 122ND INF CAMP WHEELER GA
217094	R	082718	CO C 121ST INF CAMP WHEELER GA	228247	R	082618	WAREHOUSE CAMP WHEELER GA
217305	W	081518	SMALL ARMS FIRING SCHOOL	228783	R	083118	CO F 122ND INF CAMP GREENE NC
217438	R	082618	WAREHOUSE SUP CO 121ST INF	228834	R	082618	WAREHOUSE CAMP WHEELER GA
217454	R	083018	WAREHOUSE CAMP WHEELER GA	229219	R	082618	WAREHOUSE 106TH AMMO TRAIN
217498	R	082718	CO I 122ND INF CAMP WHEELER GA	229773	R	082618	WAREHOUSE 121ST INF CMP WHEELER
217507	R	082718	CO D 121ST INF CAMP WHEELER GA	230044	E	030319	CAMP ZACHARY TAYLOR
217553	R	083018	WAREHOUSE CAMP WHEELER GA	230598	R	082618	WAREHOUSE 121ST INF CMP WHEELER
217624	R	082618	WAREHOUSE CAMP WHEELER GA	231070	R	082718	CO B 121ST INF CAMP WHEELER GA
217730	R	082618	WAREHOUSE SUP CO 121ST INF	231097	R	083018	WAREHOUSE CAMP WHEELER GA
218112	R	082618	CO F 106TH AMMO TRAIN	231206	R	082718	CO A 121ST INF CAMP WHEELER GA
218186	R	082718	CO C 122ND INF CAMP WHEELER GA	231235	R	082618	WAREHOUSE 121ST INF CMP WHEELER

Model Code(s): E = Eddystone R = Remington W = Winchester

Serial	Model	MMDDYY	Usage	Serial	Model	MMDDYY	Usage
231492	R	083118	CO F 122ND INF CAMP GREENE NC	266135	R	083118	CO H 122ND INF CAMP GREENE NC
231975	R	082618	WAREHOUSE CAMP WHEELER GA	266553	R	082618	WAREHOUSE CAMP WHEELER GA
232745	R	082618	WAREHOUSE CAMP WHEELER GA	266616	R	082718	CO G 121ST INF CAMP WHEELER GA
232866	R	082618	WAREHOUSE CAMP WHEELER GA	267061	R	082718	CO B 121ST INF CAMP WHEELER GA
233350	R	082618	WAREHOUSE SUP CO 121ST INF	267117	R	083118	CO G 122ND INF CAMP GREENE NC
233773	R	082618	WAREHOUSE CAMP WHEELER GA	267132	R	082618	WAREHOUSE 106TH AMMO TRAIN
233798	R	082618	WAREHOUSE SUP CO 121ST INF	268226	R	082718	CO D 122ND INF CAMP WHEELER GA
234062	R	083118	CO E 122ND INF CAMP GREENE NC	268671	R	083118	CO F 122ND INF CAMP GREENE NC
234247	R	082618	WAREHOUSE CAMP WHEELER GA	269001	R	082618	WAREHOUSE CAMP WHEELER GA
234503	R	111022	AUGUSTA ARS (OVERHAULED)	269504	R	082718	CO B 121ST INF CAMP WHEELER GA
235939	R	083118	CO H 122ND INF CAMP GREENE NC	269793	R	082618	WAREHOUSE CAMP WHEELER GA
236028	R	082718	CO E 121ST INF CAMP WHEELER GA	269867	R	082618	WAREHOUSE 106TH AMMO TRAIN
236485	R	092118	CAMP FREMONT	270034	R	083018	WAREHOUSE CAMP WHEELER GA
237535	R	082718	CO C 121ST INF CAMP WHEELER GA	270036	R	082718	CO D 121ST INF CAMP WHEELER GA
237635	R	083118	CO E 122ND INF CAMP GREENE NC	270076	R	082618	WAREHOUSE CAMP WHEELER GA
237898	R	083118	CO G 122ND INF CAMP GREENE NC	270130	R	082618	WAREHOUSE 121ST INF CAMP WHEELER
237942	R	082618	WAREHOUSE CAMP WHEELER GA	270291	R	083118	CO H 122ND INF CAMP GREENE NC
238015	R	082618	WAREHOUSE CAMP WHEELER GA	270469	R	082618	WAREHOUSE CAMP WHEELER GA
238498	R	083118	CO E 122ND INF CAMP GREENE NC	270553	R	082618	WAREHOUSE 106TH AMMO TRAIN
238856	R	082718	CO G 121ST INF CAMP WHEELER GA	270782	W	111022	AUGUSTA ARS (OVERHAULED)
239176	R	082618	WAREHOUSE SUP CO 121ST INF	271039	R	083118	CO E 122ND INF CAMP GREENE NC
239256	R	082718	CO F 121ST INF CAMP WHEELER GA	271113	R	082718	CO B 122ND INF CAMP WHEELER GA
239308	R	082718	CO D 122ND INF CAMP WHEELER GA	271207	R	083118	CO F 122ND INF CAMP GREENE NC
239554	R	082718	CO A 121ST INF CAMP WHEELER GA	271296	W	111022	AUGUSTA ARS (OVERHAULED)
239680	R	082718	CO E 121ST INF CAMP WHEELER GA	271387	R	083118	CO E 122ND INF CAMP GREENE NC
239813	R	082718	CO B 121ST INF CAMP WHEELER GA	271712	R	083118	CO G 122ND INF CAMP GREENE NC
240371	R	082618	WAREHOUSE CAMP WHEELER GA	271739	R	083118	CO F 122ND INF CAMP GREENE NC
241083	R	083118	CO G 122ND INF CAMP GREENE NC	271752	R	083118	CO H 122ND INF CAMP GREENE NC
241418	E	050118	WATERTOWN ARS (TESTED)	271988	R	082718	CO E 121ST INF CAMP WHEELER GA
241934	R	082718	CO M 122ND INF CAMP WHEELER GA	272149	R	083118	CO H 122ND INF CAMP GREENE NC
242544	R	082618	WAREHOUSE CAMP WHEELER GA	272201	R	082618	WAREHOUSE SUP CO 121ST INF
242610	R	083118	CO F 122ND INF CAMP GREENE NC	272749	R	082718	CO C 121ST INF CAMP WHEELER GA
242760	E	041018	CO F 310TH INF	272763	R	083118	CO E 122ND INF CAMP GREENE NC
242876	R	082618	WAREHOUSE SUP CO 121ST INF	272815	R	082618	WAREHOUSE CAMP WHEELER GA
242975	R	082618	WAREHOUSE CAMP WHEELER GA	272983	R	083118	CO E 122ND INF CAMP GREENE NC
243277	R	082618	WAREHOUSE CAMP WHEELER GA	273104	R	083018	WAREHOUSE CAMP WHEELER GA
243333	R	082718	CO G 121ST INF CAMP WHEELER GA	273134	R	083018	WAREHOUSE CAMP WHEELER GA
244031	R	083118	CO E 122ND INF CAMP GREENE NC	273169	R	083018	WAREHOUSE CAMP WHEELER GA
245853	R	082718	CO D 121ST INF CAMP WHEELER GA	273200	R	082618	WAREHOUSE 121ST INF CAMP WHEELER
245878	R	082718	CO M 122ND INF CAMP WHEELER GA	273275	R	083118	CO H 122ND INF CAMP GREENE NC
246025	R	083118	CO H 122ND INF CAMP GREENE NC	273430	R	082618	WAREHOUSE 121ST INF CAMP WHEELER
246318	R	082618	WAREHOUSE CAMP WHEELER GA	273579	R	083118	CO G 122ND INF CAMP GREENE NC
248025	R	062318	CAMP BOWIE (FOUND ON RANGE)	273786	R	083118	CO E 122ND INF CAMP GREENE NC
249017	R	082718	CO G 121ST INF CAMP WHEELER GA	273848	R	082718	CO C 122ND INF CAMP WHEELER GA
249158	R	082718	CO C 121ST INF CAMP WHEELER GA	273901	R	082618	WAREHOUSE SUP CO 121ST INF
249483	R	092118	CAMP FREMONT	273933	R	082618	WAREHOUSE SUP CO 121ST INF
249729	R	082618	WAREHOUSE 106TH AMMO TRAIN	274010	E	050318	CAPT BREESE (BATTLE SIGHT TEST)
250472	R	083018	WAREHOUSE CAMP WHEELER GA	274113	R	082618	WAREHOUSE CAMP WHEELER GA
251578	R	083118	CO G 122ND INF CAMP GREENE NC	274410	R	082618	WAREHOUSE CAMP WHEELER GA
252394	R	082618	WAREHOUSE CAMP WHEELER GA	274428	R	082718	CO C 121ST INF CAMP WHEELER GA
252860	R	062318	CAMP BOWIE (FOUND ON RANGE)	274443	R	082618	WAREHOUSE 121ST INF CAMP WHEELER
253483	R	082618	WAREHOUSE CAMP WHEELER GA	274560	R	082718	CO I 122ND INF CAMP WHEELER GA
253645	E	062718	HIGHEST NUMBER IN 323RD INF	274571	R	082618	WAREHOUSE CAMP WHEELER GA
254594	R	082618	WAREHOUSE 106TH AMMO TRAIN	274588	R	083118	CO E 122ND INF CAMP GREENE NC
255143	R	082618	WAREHOUSE CAMP WHEELER GA	274617	R	082618	WAREHOUSE CAMP WHEELER GA
255237	R	082618	WAREHOUSE 106TH AMMO TRAIN	274624	R	083118	CO E 122ND INF CAMP GREENE NC
255483	W	111022	AUGUSTA ARS (OVERHAULED)	274697	R	083118	CO H 122ND INF CAMP GREENE NC
255949	R	082618	WAREHOUSE CAMP WHEELER GA	274856	R	082618	WAREHOUSE CAMP WHEELER GA
255991	R	082618	WAREHOUSE CAMP WHEELER GA	274959	R	082618	WAREHOUSE CAMP WHEELER GA
256764	R	082618	WAREHOUSE CAMP WHEELER GA	275036	R	083118	CO F 122ND INF CAMP GREENE NC
257620	R	082718	CO C 121ST INF CAMP WHEELER GA	275161	R	083118	CO E 122ND INF CAMP GREENE NC
257698	R	082618	WAREHOUSE 106TH AMMO TRAIN	275166	R	082618	WAREHOUSE CAMP WHEELER GA
257958	R	082718	CO A 121ST INF CAMP WHEELER GA	275295	R	083118	CO G 122ND INF CAMP GREENE NC
258221	R	082618	WAREHOUSE SUP CO 121ST INF	275352	R	082718	CO I 122ND INF CAMP WHEELER GA
258367	R	082618	WAREHOUSE CAMP WHEELER GA	275565	R	082618	WAREHOUSE CAMP WHEELER GA
259722	R	111022	AUGUSTA ARS (OVERHAULED)	275641	R	082718	CO G 121ST INF CAMP WHEELER GA
259795	R	083018	WAREHOUSE CAMP WHEELER GA	275845	W	111022	AUGUSTA ARS (OVERHAULED)
261039	R	083118	CO F 122ND INF CAMP GREENE NC	275921	R	082718	CO G 121ST INF CAMP WHEELER GA
261688	R	083118	CO H 122ND INF CAMP GREENE NC	276056	R	083018	WAREHOUSE CAMP WHEELER GA
261805	W	111022	AUGUSTA ARS (OVERHAULED)	276117	R	082618	WAREHOUSE SUP CO 121ST INF
262377	W	111022	AUGUSTA ARS (OVERHAULED)	276302	R	083018	WAREHOUSE CAMP WHEELER GA
262507	R	082618	WAREHOUSE CAMP WHEELER GA	276308	R	082618	WAREHOUSE SUP CO 121ST INF
262706	R	083118	CO F 122ND INF CAMP GREENE NC	276337	R	082618	WAREHOUSE CAMP WHEELER GA
262803	R	083018	WAREHOUSE CAMP WHEELER GA	276405	R	111022	AUGUSTA ARS (OVERHAULED)
262970	R	082718	CO B 121ST INF CAMP WHEELER GA	276455	R	082618	WAREHOUSE CAMP WHEELER GA
264299	R	082718	CO E 121ST INF CAMP WHEELER GA	276493	R	083018	WAREHOUSE CAMP WHEELER GA
264564	R	082718	CO I 122ND INF CAMP WHEELER GA	276667	R	083118	CO F 122ND INF CAMP GREENE NC
264717	R	082618	WAREHOUSE SUP CO 121ST INF	276754	R	082618	WAREHOUSE CAMP WHEELER GA
265094	R	082618	WAREHOUSE CAMP WHEELER GA	276790	R	082718	CO C 122ND INF CAMP WHEELER GA
265585	R	082718	CO C 121ST INF CAMP WHEELER GA	276916	R	083118	CO E 122ND INF CAMP GREENE NC
265647	R	082718	CO H 121ST INF CAMP WHEELER GA	276942	W	111022	AUGUSTA ARS (OVERHAULED)
265784	R	083118	CO H 122ND INF CAMP GREENE NC	276995	R	083118	CO H 122ND INF CAMP GREENE NC
265950	E	062118	CO C 143RD INF CAMP BOWIE	277044	R	082618	WAREHOUSE CAMP WHEELER GA
265967	R	082718	CO F 121ST INF CAMP WHEELER GA	277076	R	083018	WAREHOUSE CAMP WHEELER GA

Model Code(s): E = Eddystone R = Remington W = Winchester

Model 1917 Rifles (Cont'd)

Serial	Model	MDDYY	Usage	Serial	Model	MDDYY	Usage
277180	R	082718	CO F 121ST INF CAMP WHEELER GA	284080	R	082618	CO A 122ND INF CAMP WHEELER GA
277292	R	082718	CO I 122ND INF CAMP WHEELER GA	284106	R	082718	CO H 121ST INF CAMP WHEELER GA
277322	R	083018	WAREHOUSE CAMP WHEELER GA	284133	R	083118	CO G 122ND INF CAMP GREENE NC
277330	R	083018	WAREHOUSE CAMP WHEELER GA	284183	R	082618	WAREHOUSE CAMP WHEELER GA
277498	R	083118	CO H 122ND INF CAMP GREENE NC	284454	R	082618	WAREHOUSE CAMP WHEELER GA
277551	R	082618	WAREHOUSE CAMP WHEELER GA	284507	R	083018	WAREHOUSE CAMP WHEELER GA
277561	R	082718	CO A 121ST INF CAMP WHEELER GA	284656	R	082818	CO K 122ND INF CAMP WHEELER GA
277573	R	082718	CO I 122ND INF CAMP WHEELER GA	284666	R	082718	CO I 122ND INF CAMP WHEELER GA
277785	R	082718	CO C 121ST INF CAMP WHEELER GA	284778	R	082618	WAREHOUSE CAMP WHEELER GA
278067	R	082718	CO B 121ST INF CAMP WHEELER GA	284842	R	082618	WAREHOUSE 106TH AMMO TRAIN
278218	R	083118	CO E 122ND INF CAMP GREENE NC	284918	R	082618	WAREHOUSE CAMP WHEELER GA
278446	R	083118	CO G 122ND INF CAMP GREENE NC	285390	R	082618	WAREHOUSE CAMP WHEELER GA
278483	R	082618	WAREHOUSE CAMP WHEELER GA	285449	R	082718	CO D 122ND INF CAMP WHEELER GA
278656	R	082618	WAREHOUSE SUP CO 121ST INF	285456	R	083118	CO F 122ND INF CAMP GREENE NC
278681	R	082718	CO B 122ND INF CAMP WHEELER GA	285462	R	082618	WAREHOUSE CAMP WHEELER GA
278861	R	082718	CO D 122ND INF CAMP WHEELER GA	285572	R	082718	CO B 122ND INF CAMP WHEELER GA
279002	R	082718	CO F 121ST INF CAMP WHEELER GA	285730	R	083118	CO H 122ND INF CAMP GREENE NC
279016	E	040618	CO A 110TH INF CAMP HANCOCK	285745	R	083118	CO E 122ND INF CAMP GREENE NC
279017	R	082618	WAREHOUSE CAMP WHEELER GA	285840	R	082618	WAREHOUSE CAMP WHEELER GA
279083	R	083118	CO H 122ND INF CAMP GREENE NC	285859	R	083118	CO E 122ND INF CAMP GREENE NC
279101	R	082618	WAREHOUSE 106TH AMMO TRAIN	285962	R	082618	WAREHOUSE CAMP WHEELER GA
279146	R	082618	WAREHOUSE 121ST INF CMP WHEELER	286301	R	082618	WAREHOUSE 121ST INF CMP WHEELER
279164	R	083118	CO E 122ND INF CAMP GREENE NC	286305	R	083018	WAREHOUSE CAMP WHEELER GA
279171	R	082618	61ST BRIGADE HQ CAMP WHEELER GA	286306	R	082618	WAREHOUSE CAMP WHEELER GA
279310	R	082618	WAREHOUSE 106TH AMMO TRAIN	286670	R	082618	CO A 122ND INF CAMP WHEELER GA
279512	R	083118	CO H 122ND INF CAMP GREENE NC	286727	R	083118	CO F 122ND INF CAMP GREENE NC
279877	R	082718	CO H 121ST INF CAMP WHEELER GA	286812	R	082618	WAREHOUSE 106TH AMMO TRAIN
279895	R	082618	WAREHOUSE CAMP WHEELER GA	286921	R	082618	WAREHOUSE 106TH AMMO TRAIN
280141	R	082618	WAREHOUSE CAMP WHEELER GA	286956	R	082618	CO A 122ND INF CAMP WHEELER GA
280204	R	082618	WAREHOUSE CAMP WHEELER GA	287198	R	082618	WAREHOUSE CAMP WHEELER GA
280223	E	081718	STOCK BOLT TEST	287310	R	082618	WAREHOUSE CAMP WHEELER GA
280246	R	082618	WAREHOUSE CAMP WHEELER GA	287355	R	082618	WAREHOUSE CAMP WHEELER GA
280278	R	083118	CO H 122ND INF CAMP GREENE NC	287439	R	082718	CO C 122ND INF CAMP WHEELER GA
280304	R	082618	WAREHOUSE CAMP WHEELER GA	287544	R	062818	SA DAILY FUNCTION TEST
280366	R	082618	WAREHOUSE CAMP WHEELER GA	287684	R	082618	WAREHOUSE CAMP WHEELER GA
280447	R	082618	WAREHOUSE SUP CO 121ST INF	287733	R	083018	WAREHOUSE CAMP WHEELER GA
280483	R	082618	CO A 122ND INF CAMP WHEELER GA	287768	R	083018	WAREHOUSE CAMP WHEELER GA
280593	R	082618	WAREHOUSE CAMP WHEELER GA	287773	R	083118	CO F 122ND INF CAMP GREENE NC
280769	R	083118	CO E 122ND INF CAMP GREENE NC	287782	R	082618	WAREHOUSE 121ST INF CMP WHEELER
280919	R	083118	CO F 122ND INF CAMP GREENE NC	287784	R	082618	WAREHOUSE SUP CO 121ST INF
281016	R	082718	CO C 121ST INF CAMP WHEELER GA	287821	R	083118	CO E 122ND INF CAMP GREENE NC
281047	R	083118	CO G 122ND INF CAMP GREENE NC	287832	R	083118	CO F 122ND INF CAMP GREENE NC
281107	R	083118	CO G 122ND INF CAMP GREENE NC	287949	R	083118	CO G 122ND INF CAMP GREENE NC
281181	R	082618	WAREHOUSE CAMP WHEELER GA	288064	R	082618	WAREHOUSE CAMP WHEELER GA
281189	R	082718	CO E 121ST INF CAMP WHEELER GA	288117	R	082718	CO G 121ST INF CAMP WHEELER GA
281227	R	082618	WAREHOUSE CAMP WHEELER GA	288121	R	083118	CO H 122ND INF CAMP GREENE NC
281260	R	082618	WAREHOUSE CAMP WHEELER GA	288126	R	082618	WAREHOUSE CAMP WHEELER GA
281338	R	083118	CO H 122ND INF CAMP GREENE NC	288292	R	082618	CO A 122ND INF CAMP WHEELER GA
281402	R	082618	WAREHOUSE CAMP WHEELER GA	288300	R	083118	CO E 122ND INF CAMP GREENE NC
281528	R	082618	CO F 106TH AMMO TRAIN	288363	R	082618	WAREHOUSE 121ST INF CMP WHEELER
281631	R	082718	CO M 122ND INF CAMP WHEELER GA	288371	R	082618	WAREHOUSE SUP CO 121ST INF
281687	R	083118	CO E 122ND INF CAMP GREENE NC	288533	R	083118	CO E 122ND INF CAMP GREENE NC
281741	R	082618	61ST BRIGADE HQ CAMP WHEELER GA	288558	R	082618	WAREHOUSE CAMP WHEELER GA
281853	R	082618	WAREHOUSE 121ST INF CMP WHEELER	288570	R	083018	WAREHOUSE CAMP WHEELER GA
281860	R	082618	WAREHOUSE CAMP WHEELER GA	288667	R	082618	WAREHOUSE CAMP WHEELER GA
282031	R	082618	WAREHOUSE 121ST INF CMP WHEELER	288684	R	082618	WAREHOUSE CAMP WHEELER GA
282043	R	082718	CO B 121ST INF CAMP WHEELER GA	288740	R	082618	WAREHOUSE CAMP WHEELER GA
282053	R	082718	CO B 121ST INF CAMP WHEELER GA	288765	R	083118	CO E 122ND INF CAMP GREENE NC
282213	R	082718	CO B 122ND INF CAMP WHEELER GA	288793	R	082718	CO B 121ST INF CAMP WHEELER GA
282214	R	083118	CO H 122ND INF CAMP GREENE NC	288812	R	082618	WAREHOUSE CAMP WHEELER GA
282309	R	082618	62ND BRIGADE HQ CAMP WHEELER GA	288826	R	082618	WAREHOUSE 121ST INF CMP WHEELER
282325	R	083118	CO G 122ND INF CAMP GREENE NC	288878	R	083018	WAREHOUSE CAMP WHEELER GA
282398	R	082718	CO D 121ST INF CAMP WHEELER GA	288934	R	082718	CO L 122ND INF CAMP WHEELER GA
282503	R	082618	WAREHOUSE CAMP WHEELER GA	288964	R	082618	WAREHOUSE CAMP WHEELER GA
282530	R	083118	CO F 122ND INF CAMP GREENE NC	289020	R	082618	WAREHOUSE CAMP WHEELER GA
282624	R	082618	WAREHOUSE SUP CO 121ST INF	289111	R	082618	61ST BRIGADE HQ CAMP WHEELER GA
282638	R	082618	WAREHOUSE CAMP WHEELER GA	289194	R	083018	WAREHOUSE CAMP WHEELER GA
282747	R	083118	CO G 122ND INF CAMP GREENE NC	289369	R	082618	WAREHOUSE CAMP WHEELER GA
282890	R	083118	CO F 122ND INF CAMP GREENE NC	289371	R	082618	WAREHOUSE 121ST INF CMP WHEELER
282942	R	082618	61ST BRIGADE HQ CAMP WHEELER GA	289557	R	082618	WAREHOUSE 121ST INF CMP WHEELER
282955	R	082718	CO F 121ST INF CAMP WHEELER GA	289682	R	082618	WAREHOUSE 106TH AMMO TRAIN
283177	E	062118	CO C 143RD INF CAMP BOWIE	289691	R	082618	WAREHOUSE CAMP WHEELER GA
283224	R	083018	WAREHOUSE CAMP WHEELER GA	289745	R	082618	WAREHOUSE 121ST INF CMP WHEELER
283266	R	083018	WAREHOUSE CAMP WHEELER GA	289757	R	082618	WAREHOUSE 121ST INF CMP WHEELER
283273	R	083018	WAREHOUSE CAMP WHEELER GA	289827	R	082718	CO C 122ND INF CAMP WHEELER GA
283440	R	082618	WAREHOUSE CAMP WHEELER GA	289947	R	082618	WAREHOUSE CAMP WHEELER GA
283574	R	083118	CO E 122ND INF CAMP GREENE NC	290009	R	082618	WAREHOUSE 106TH AMMO TRAIN
283626	R	082618	WAREHOUSE CAMP WHEELER GA	290020	R	082618	WAREHOUSE CAMP WHEELER GA
283764	R	082618	WAREHOUSE CAMP WHEELER GA	290143	E	111022	AUGUSTA ARS (OVERHAULED)
283847	R	082618	CO A 122ND INF CAMP WHEELER GA	290205	R	083118	CO F 122ND INF CAMP GREENE NC
283919	R	111022	AUGUSTA ARS (OVERHAULED)	290288	R	082718	CO M 122ND INF CAMP WHEELER GA
283939	R	082718	CO G 121ST INF CAMP WHEELER GA	290299	R	083118	CO H 122ND INF CAMP GREENE NC
284042	R	082618	WAREHOUSE CAMP WHEELER GA	290332	R	082818	CO K 122ND INF CAMP WHEELER GA
284060	R	082618	WAREHOUSE 106TH AMMO TRAIN	290352	R	082718	CO C 122ND INF CAMP WHEELER GA

Model Code(s): E = Eddystone R = Remington

Serial	Model	MMDDYY	Usage	Serial	Model	MMDDYY	Usage
290409	R	083118	CO G 122ND INF CAMP GREENE NC	295359	R	082718	CO D 121ST INF CAMP WHEELER GA
290453	R	083118	CO G 122ND INF CAMP GREENE NC	295361	R	082618	WAREHOUSE CAMP WHEELER GA
290728	R	083118	CO F 122ND INF CAMP GREENE NC	295419	R	083018	WAREHOUSE CAMP WHEELER GA
290754	R	082618	WAREHOUSE CAMP WHEELER GA	295475	R	082618	CO F 106TH AMMO TRAIN
290817	R	083118	CO H 122ND INF CAMP GREENE NC	295478	R	083118	CO E 122ND INF CAMP GREENE NC
290834	R	082618	WAREHOUSE CAMP WHEELER GA	295526	R	082618	WAREHOUSE CAMP WHEELER GA
290960	R	083118	CO E 122ND INF CAMP GREENE NC	295608	R	082618	WAREHOUSE 106TH AMMO TRAIN
291008	R	082618	WAREHOUSE CAMP WHEELER GA	295667	R	082718	CO F 121ST INF CAMP WHEELER GA
291022	R	082718	CO E 121ST INF CAMP WHEELER GA	295697	R	083118	CO E 122ND INF CAMP GREENE NC
291079	R	082618	WAREHOUSE 121ST INF CMP WHEELER	295758	R	082718	CO C 122ND INF CAMP WHEELER GA
291092	R	083018	WAREHOUSE CAMP WHEELER GA	295821	R	082618	WAREHOUSE CAMP WHEELER GA
291166	R	082618	WAREHOUSE CAMP WHEELER GA	295827	R	082618	WAREHOUSE 106TH AMMO TRAIN
291171	R	083118	CO E 122ND INF CAMP GREENE NC	295887	R	082618	WAREHOUSE CAMP WHEELER GA
291187	R	083118	CO H 122ND INF CAMP GREENE NC	295895	R	082618	WAREHOUSE CAMP WHEELER GA
291193	R	082618	WAREHOUSE CAMP WHEELER GA	295996	R	082618	WAREHOUSE CAMP WHEELER GA
291215	R	082618	WAREHOUSE 121ST INF CMP WHEELER	296063	R	082618	WAREHOUSE CAMP WHEELER GA
291364	R	082818	CO K 122ND INF CAMP WHEELER GA	296066	R	083118	CO H 122ND INF CAMP GREENE NC
291427	R	082718	CO C 121ST INF CAMP WHEELER GA	296089	R	082618	WAREHOUSE 106TH AMMO TRAIN
291448	R	082618	WAREHOUSE CAMP WHEELER GA	296119	R	083018	WAREHOUSE CAMP WHEELER GA
291458	R	082718	CO C 122ND INF CAMP WHEELER GA	296145	R	082618	WAREHOUSE SUP CO 121ST INF
291477	R	082818	CO K 122ND INF CAMP WHEELER GA	296163	R	083018	WAREHOUSE CAMP WHEELER GA
291532	R	082718	CO L 122ND INF CAMP WHEELER GA	296200	R	083118	CO G 122ND INF CAMP GREENE NC
291575	R	082618	WAREHOUSE 121ST INF CMP WHEELER	296287	R	083018	WAREHOUSE CAMP WHEELER GA
291677	R	082718	CO L 122ND INF CAMP WHEELER GA	296523	R	082618	WAREHOUSE 106TH AMMO TRAIN
291681	R	082618	WAREHOUSE SUP CO 121ST INF	296551	R	082618	WAREHOUSE CAMP WHEELER GA
291717	R	082618	WAREHOUSE 106TH AMMO TRAIN	296567	R	082618	WAREHOUSE SUP CO 121ST INF
291736	R	083118	CO G 122ND INF CAMP GREENE NC	296631	R	082618	WAREHOUSE 121ST INF CMP WHEELER
291749	R	082618	WAREHOUSE CAMP WHEELER GA	296709	R	083018	WAREHOUSE CAMP WHEELER GA
291750	R	083118	CO E 122ND INF CAMP GREENE NC	296721	R	082618	WAREHOUSE 106TH AMMO TRAIN
291767	R	083118	CO H 122ND INF CAMP GREENE NC	296811	R	082618	WAREHOUSE CAMP WHEELER GA
291825	R	082618	WAREHOUSE CAMP WHEELER GA	296857	R	083118	CO G 122ND INF CAMP GREENE NC
291833	R	082618	WAREHOUSE CAMP WHEELER GA	296884	R	083018	WAREHOUSE CAMP WHEELER GA
291848	R	083118	CO G 122ND INF CAMP GREENE NC	296928	R	082618	WAREHOUSE 121ST INF CMP WHEELER
291853	R	082718	CO M 122ND INF CAMP WHEELER GA	296987	R	083018	WAREHOUSE CAMP WHEELER GA
291873	R	083118	CO G 122ND INF CAMP GREENE NC	297114	R	082618	WAREHOUSE CAMP WHEELER GA
291926	R	082618	WAREHOUSE CAMP WHEELER GA	297158	R	082718	CO H 121ST INF CAMP WHEELER GA
291948	R	082718	CO M 122ND INF CAMP WHEELER GA	297161	R	082618	WAREHOUSE SUP CO 121ST INF
291963	R	082718	CO M 122ND INF CAMP WHEELER GA	297164	R	082718	CO F 121ST INF CAMP WHEELER GA
292122	R	082618	WAREHOUSE CAMP WHEELER GA	297243	R	082718	CO C 122ND INF CAMP WHEELER GA
292130	R	082618	WAREHOUSE SUP CO 121ST INF	297244	R	082718	CO A 121ST INF CAMP WHEELER GA
292148	R	082618	WAREHOUSE CAMP WHEELER GA	297303	R	082618	WAREHOUSE SUP CO 121ST INF
292270	R	082618	WAREHOUSE 106TH AMMO TRAIN	297360	R	082618	WAREHOUSE CAMP WHEELER GA
292346	R	083118	CO H 122ND INF CAMP GREENE NC	297372	R	082618	WAREHOUSE SUP CO 121ST INF
292443	R	082718	CO G 121ST INF CAMP WHEELER GA	297378	R	083118	CO F 122ND INF CAMP GREENE NC
292452	R	082618	WAREHOUSE CAMP WHEELER GA	297401	R	082618	WAREHOUSE CAMP WHEELER GA
292542	R	082718	CO E 121ST INF CAMP WHEELER GA	297436	R	082618	WAREHOUSE CAMP WHEELER GA
292550	R	082618	WAREHOUSE SUP CO 121ST INF	297519	R	082618	WAREHOUSE CAMP WHEELER GA
292705	R	083018	WAREHOUSE CAMP WHEELER GA	297540	R	082618	WAREHOUSE 106TH AMMO TRAIN
292756	R	083018	WAREHOUSE CAMP WHEELER GA	297554	R	082618	WAREHOUSE CAMP WHEELER GA
292808	R	082718	CO C 121ST INF CAMP WHEELER GA	297561	R	082618	WAREHOUSE 106TH AMMO TRAIN
292854	R	082618	WAREHOUSE CAMP WHEELER GA	297585	R	082618	WAREHOUSE SUP CO 121ST INF
293015	R	082718	CO H 121ST INF CAMP WHEELER GA	297629	R	082618	WAREHOUSE 121ST INF CMP WHEELER
293129	R	062818	SA DAILY FUNCTION TEST	297646	R	082618	WAREHOUSE CAMP WHEELER GA
293145	R	082618	WAREHOUSE CAMP WHEELER GA	297709	R	083118	CO E 122ND INF CAMP GREENE NC
293171	R	082618	WAREHOUSE 121ST INF CMP WHEELER	297729	R	082618	WAREHOUSE 122ND INF CMP WHEELER
293213	R	082618	WAREHOUSE CAMP WHEELER GA	297843	R	082618	WAREHOUSE CAMP WHEELER GA
293362	R	062818	SA DAILY FUNCTION TEST	297935	R	082618	WAREHOUSE 106TH AMMO TRAIN
293389	R	082618	WAREHOUSE CAMP WHEELER GA	298083	R	082618	WAREHOUSE CAMP WHEELER GA
293591	R	082718	CO G 121ST INF CAMP WHEELER GA	298105	R	083118	CO F 122ND INF CAMP GREENE NC
293841	R	082718	CO B 122ND INF CAMP WHEELER GA	298156	R	083018	WAREHOUSE CAMP WHEELER GA
293986	R	083118	CO G 122ND INF CAMP GREENE NC	298188	R	083018	WAREHOUSE CAMP WHEELER GA
294007	R	082818	CO K 122ND INF CAMP WHEELER GA	298229	R	083118	CO G 122ND INF CAMP GREENE NC
294190	R	083118	CO G 122ND INF CAMP GREENE NC	298303	R	082618	WAREHOUSE CAMP WHEELER GA
294257	R	083118	CO E 122ND INF CAMP GREENE NC	298352	R	082618	WAREHOUSE 106TH AMMO TRAIN
294349	R	082718	CO D 122ND INF CAMP WHEELER GA	298362	R	082618	WAREHOUSE SUP CO 121ST INF
294384	R	083118	CO G 122ND INF CAMP GREENE NC	298446	R	082618	WAREHOUSE 106TH AMMO TRAIN
294403	R	083118	CO H 122ND INF CAMP GREENE NC	298497	R	082718	CO E 121ST INF CAMP WHEELER GA
294465	R	083018	WAREHOUSE CAMP WHEELER GA	298614	R	082618	WAREHOUSE CAMP WHEELER GA
294470	R	082718	CO I 122ND INF CAMP WHEELER GA	298615	R	083118	CO F 122ND INF CAMP GREENE NC
294596	R	083118	CO G 122ND INF CAMP GREENE NC	298762	R	082718	CO M 122ND INF CAMP WHEELER GA
294607	R	082718	CO F 121ST INF CAMP WHEELER GA	298782	R	082618	WAREHOUSE CAMP WHEELER GA
294656	R	082618	WAREHOUSE SUP CO 121ST INF	298893	R	083018	WAREHOUSE CAMP WHEELER GA
294662	E	021518	PACKED	298932	R	082718	CO C 122ND INF CAMP WHEELER GA
294702	R	082618	WAREHOUSE CAMP WHEELER GA	298946	R	082618	WAREHOUSE SUP CO 121ST INF
294751	R	083118	CO H 122ND INF CAMP GREENE NC	299173	R	082618	WAREHOUSE 106TH AMMO TRAIN
294768	R	082618	WAREHOUSE CAMP WHEELER GA	299215	R	083018	WAREHOUSE CAMP WHEELER GA
294790	R	062318	CAMP BOWIE (FOUND ON RANGE)	299315	R	083118	CO E 122ND INF CAMP GREENE NC
294792	R	082618	WAREHOUSE 121ST INF CMP WHEELER	299439	R	082618	WAREHOUSE 106TH AMMO TRAIN
294840	R	083118	CO F 122ND INF CAMP GREENE NC	299509	R	082618	WAREHOUSE SUP CO 121ST INF
294908	R	082618	WAREHOUSE CAMP WHEELER GA	299515	R	083118	CO E 122ND INF CAMP GREENE NC
295012	R	083118	CO F 122ND INF CAMP GREENE NC	299525	R	082618	WAREHOUSE CAMP WHEELER GA
295036	R	082718	CO E 121ST INF CAMP WHEELER GA	299540	R	082718	CO D 122ND INF CAMP WHEELER GA
295101	R	083118	CO H 122ND INF CAMP GREENE NC	299551	R	082618	WAREHOUSE 121ST INF CMP WHEELER
295276	R	082718	CO H 121ST INF CAMP WHEELER GA	299614	R	082618	WAREHOUSE 106TH AMMO TRAIN

Model Code(s): E = Eddystone R = Remington

Model 1917 Rifles (Cont'd)

Serial	Model	MMDDYY	Usage	Serial	Model	MMDDYY	Usage
299635	R	083118	CO H 122ND INF CAMP GREENE NC	304945	R	082618	WAREHOUSE 106TH AMMO TRAIN
299645	R	082618	WAREHOUSE 121ST INF CMP WHEELER	304961	E	021518	PACKED
299883	R	083118	CO G 122ND INF CAMP GREENE NC	305100	R	083018	WAREHOUSE CAMP WHEELER GA
300104	R	083018	WAREHOUSE CAMP WHEELER GA	305128	R	082618	WAREHOUSE 106TH AMMO TRAIN
300118	R	082618	WAREHOUSE CAMP WHEELER GA	305138	R	082618	WAREHOUSE CAMP WHEELER GA
300162	R	082818	CO K 122ND INF CAMP WHEELER GA	305303	R	083018	WAREHOUSE CAMP WHEELER GA
300163	R	083018	WAREHOUSE CAMP WHEELER GA	305352	R	082718	CO D 121ST INF CAMP WHEELER GA
300351	R	082618	WAREHOUSE 106TH AMMO TRAIN	305446	R	083118	CO G 122ND INF CAMP GREENE NC
300402	R	083118	CO F 122ND INF CAMP GREENE NC	305452	R	082618	WAREHOUSE 106TH AMMO TRAIN
300414	R	082618	WAREHOUSE 106TH AMMO TRAIN	305453	R	082618	WAREHOUSE SUP CO 121ST INF
300451	R	082618	WAREHOUSE CAMP WHEELER GA	305466	R	082618	WAREHOUSE 121ST INF CMP WHEELER
300493	R	083018	WAREHOUSE CAMP WHEELER GA	305500	R	083018	WAREHOUSE CAMP WHEELER GA
300535	R	082618	WAREHOUSE 106TH AMMO TRAIN	305573	E	021518	PACKED
300548	R	082618	WAREHOUSE 106TH AMMO TRAIN	305580	R	082718	CO C 122ND INF CAMP WHEELER GA
300550	R	082618	CO A 122ND INF CAMP WHEELER GA	305589	R	083018	WAREHOUSE CAMP WHEELER GA
300606	R	082618	WAREHOUSE CAMP WHEELER GA	305638	R	082618	WAREHOUSE 106TH AMMO TRAIN
300610	R	082718	CO I 122ND INF CAMP WHEELER GA	305751	R	083118	CO E 122ND INF CAMP GREENE NC
300641	R	083118	CO H 122ND INF CAMP GREENE NC	305878	R	083018	WAREHOUSE CAMP WHEELER GA
300804	R	082618	WAREHOUSE CAMP WHEELER GA	305986	R	082618	WAREHOUSE CAMP WHEELER GA
300814	R	083018	WAREHOUSE CAMP WHEELER GA	306172	R	082618	WAREHOUSE SUP CO 121ST INF
300846	E	062418	BATTY B FA CAMP BOWIE	306234	R	082618	WAREHOUSE 106TH AMMO TRAIN
300863	R	082618	WAREHOUSE CAMP WHEELER GA	306243	R	082718	CO I 122ND INF CAMP WHEELER GA
301005	R	082718	CO D 122ND INF CAMP WHEELER GA	306280	R	083118	CO F 122ND INF CAMP GREENE NC
301142	R	083118	CO H 122ND INF CAMP GREENE NC	306336	R	082718	CO D 122ND INF CAMP WHEELER GA
301171	R	083018	WAREHOUSE CAMP WHEELER GA	306372	R	083118	CO H 122ND INF CAMP GREENE NC
301259	R	082718	CO I 122ND INF CAMP WHEELER GA	306437	R	082718	CO L 122ND INF CAMP WHEELER GA
301266	R	082718	CO H 121ST INF CAMP WHEELER GA	306457	R	083118	CO E 122ND INF CAMP GREENE NC
301294	R	082618	WAREHOUSE 106TH AMMO TRAIN	306489	R	083118	CO H 122ND INF CAMP GREENE NC
301381	R	082818	CO K 122ND INF CAMP WHEELER GA	306526	R	083118	CO H 122ND INF CAMP GREENE NC
301408	R	082718	CO D 122ND INF CAMP WHEELER GA	306529	R	082718	CO D 122ND INF CAMP WHEELER GA
301433	R	082618	WAREHOUSE CAMP WHEELER GA	306538	R	082618	WAREHOUSE SUP CO 121ST INF
301483	E	021518	PACKED	306620	R	082718	CO H 121ST INF CAMP WHEELER GA
"	R	082618	WAREHOUSE 121ST INF CMP WHEELER	306642	E	021518	PACKED
301513	R	082618	WAREHOUSE CAMP WHEELER GA	306891	R	082718	CO B 122ND INF CAMP WHEELER GA
301614	R	083018	WAREHOUSE CAMP WHEELER GA	306898	R	083118	CO G 122ND INF CAMP GREENE NC
301677	R	082718	CO E 121ST INF CAMP WHEELER GA	306936	R	082618	WAREHOUSE 106TH AMMO TRAIN
301719	R	082618	WAREHOUSE CAMP WHEELER GA	307017	R	082618	WAREHOUSE SUP CO 121ST INF
301980	R	082718	CO L 122ND INF CAMP WHEELER GA	307034	R	082718	CO H 121ST INF CAMP WHEELER GA
302025	R	083018	WAREHOUSE CAMP WHEELER GA	307069	R	082718	CO C 122ND INF CAMP WHEELER GA
302056	R	083018	WAREHOUSE CAMP WHEELER GA	307252	R	082718	CO D 121ST INF CAMP WHEELER GA
302090	R	082618	WAREHOUSE 121ST INF CMP WHEELER	307275	R	083118	CO F 122ND INF CAMP GREENE NC
302143	R	082618	WAREHOUSE 121ST INF CMP WHEELER	307325	R	083018	WAREHOUSE CAMP WHEELER GA
302249	R	082618	WAREHOUSE 106TH AMMO TRAIN	307379	R	082618	WAREHOUSE SUP CO 121ST INF
302261	R	082718	CO B 121ST INF CAMP WHEELER GA	307475	R	083118	CO F 122ND INF CAMP GREENE NC
302328	R	083118	CO G 122ND INF CAMP GREENE NC	307508	R	083118	CO G 122ND INF CAMP GREENE NC
302338	R	082618	WAREHOUSE CAMP WHEELER GA	307544	R	082618	WAREHOUSE CAMP WHEELER GA
302405	R	082618	WAREHOUSE 106TH AMMO TRAIN	307594	R	082618	WAREHOUSE 106TH AMMO TRAIN
302458	R	083018	WAREHOUSE CAMP WHEELER GA	307615	R	082618	WAREHOUSE CAMP WHEELER GA
302459	R	082618	WAREHOUSE SUP CO 121ST INF	307644	R	083118	CO F 122ND INF CAMP GREENE NC
302509	R	082618	WAREHOUSE CAMP WHEELER GA	307676	R	082618	WAREHOUSE SUP CO 121ST INF
302690	R	083118	CO H 122ND INF CAMP GREENE NC	307696	R	082618	WAREHOUSE 106TH AMMO TRAIN
302761	R	083018	WAREHOUSE CAMP WHEELER GA	307744	R	083018	WAREHOUSE CAMP WHEELER GA
302958	R	082718	CO M 122ND INF CAMP WHEELER GA	307760	R	083118	CO F 122ND INF CAMP GREENE NC
302989	R	082618	WAREHOUSE 121ST INF CMP WHEELER	307814	R	082618	WAREHOUSE SUP CO 121ST INF
303129	R	082718	CO I 122ND INF CAMP WHEELER GA	308017	R	082618	WAREHOUSE CAMP WHEELER GA
303158	R	082718	CO C 122ND INF CAMP WHEELER GA	308090	R	083118	CO G 122ND INF CAMP GREENE NC
303328	R	083018	WAREHOUSE CAMP WHEELER GA	308096	R	082718	CO L 122ND INF CAMP WHEELER GA
303333	R	082618	WAREHOUSE CAMP WHEELER GA	308148	R	082618	WAREHOUSE 121ST INF CMP WHEELER
303337	R	082618	WAREHOUSE 121ST INF CMP WHEELER	308218	R	082618	WAREHOUSE SUP CO 121ST INF
303354	R	083118	CO H 122ND INF CAMP GREENE NC	308365	R	083118	CO F 122ND INF CAMP GREENE NC
303382	R	082618	WAREHOUSE SUP CO 121ST INF	308571	E	042418	REVIEWED BY ENGR BUREAU
303473	R	083118	CO H 122ND INF CAMP GREENE NC	"	E	050118	WATERTOWN ARS (TESTED)
303491	R	083018	WAREHOUSE CAMP WHEELER GA	308603	R	082618	WAREHOUSE CAMP WHEELER GA
303719	R	083018	WAREHOUSE CAMP WHEELER GA	308670	R	072418	48TH CO 164TH DEPOT BRIG
303763	R	082618	WAREHOUSE CAMP WHEELER GA	308716	R	083118	CO F 122ND INF CAMP GREENE NC
303873	R	082718	CO E 121ST INF CAMP WHEELER GA	308799	R	082718	CO F 121ST INF CAMP WHEELER GA
303902	R	071918	SA DAILY FUNCTION TEST	308976	R	083118	CO H 122ND INF CAMP GREENE NC
304021	R	083018	WAREHOUSE CAMP WHEELER GA	309058	R	082618	WAREHOUSE CAMP WHEELER GA
304117	R	082618	WAREHOUSE CAMP WHEELER GA	309063	R	082618	WAREHOUSE 121ST INF CMP WHEELER
304151	R	082818	CO K 122ND INF CAMP WHEELER GA	309170	R	083118	CO E 122ND INF CAMP GREENE NC
304383	R	082618	WAREHOUSE SUP CO 121ST INF	309258	R	082618	WAREHOUSE 106TH AMMO TRAIN
304399	R	082618	WAREHOUSE CAMP WHEELER GA	309307	R	082618	WAREHOUSE CAMP WHEELER GA
304412	R	082618	WAREHOUSE CAMP WHEELER GA	309329	R	082618	WAREHOUSE 121ST INF CMP WHEELER
304449	R	082618	CO F 106TH AMMO TRAIN	309401	R	082718	CO F 121ST INF CAMP WHEELER GA
304456	R	082718	CO C 122ND INF CAMP WHEELER GA	309410	R	083018	WAREHOUSE CAMP WHEELER GA
304516	R	082718	CO C 121ST INF CAMP WHEELER GA	309437	R	082618	WAREHOUSE 106TH AMMO TRAIN
304722	R	082618	WAREHOUSE 121ST INF CMP WHEELER	309506	R	082618	WAREHOUSE CAMP WHEELER GA
304725	R	082618	WAREHOUSE 106TH AMMO TRAIN	309522	R	082818	CO K 122ND INF CAMP WHEELER GA
304747	R	082718	CO C 122ND INF CAMP WHEELER GA	309550	R	083118	CO G 122ND INF CAMP GREENE NC
304859	R	083118	CO F 122ND INF CAMP GREENE NC	309616	R	082618	WAREHOUSE CAMP WHEELER GA
304917	R	083118	CO E 122ND INF CAMP GREENE NC	309631	R	082618	WAREHOUSE SUP CO 121ST INF
304928	E	090418	HQ CO 8TH INF	309686	R	083118	CO E 122ND INF CAMP GREENE NC
"	E	090418	HQ CO 9TH INF CAMP FREMONT	309756	R	083118	CO H 122ND INF CAMP GREENE NC
304944	R	082718	CO B 122ND INF CAMP WHEELER GA	309808	E	062418	HIGHEST NUMBER IN 322ND INF

Model Code(s): E = Eddystone R = Remington

Serial	Model	MMDDYY	Usage	Serial	Model	MMDDYY	Usage
309869	R	082718	CO E 121ST INF CAMP WHEELER GA	323134	R	082718	CO E 121ST INF CAMP WHEELER GA
310043	R	082718	CO B 122ND INF CAMP WHEELER GA	323314	R	082618	WAREHOUSE SUP CO 121ST INF
310058	R	082718	CO E 121ST INF CAMP WHEELER GA	323403	R	082618	WAREHOUSE SUP CO 121ST INF
310286	R	082718	CO A 121ST INF CAMP WHEELER GA	323478	R	083018	WAREHOUSE CAMP WHEELER GA
310408	R	082618	WAREHOUSE CAMP WHEELER GA	323726	R	082718	CO B 122ND INF CAMP WHEELER GA
310454	W	061318	SA DAILY FUNCTION TEST	324220	R	083018	WAREHOUSE CAMP WHEELER GA
310594	R	082618	WAREHOUSE 106TH AMMO TRAIN	324235	R	082618	WAREHOUSE 106TH AMMO TRAIN
310665	R	082718	CO G 121ST INF CAMP WHEELER GA	324448	E	051518	CAMP HANCOCK STRIKER TEST
310706	R	082618	WAREHOUSE 121ST INF CMP WHEELER	324660	R	083018	WAREHOUSE CAMP WHEELER GA
310739	R	082618	WAREHOUSE SUP CO 121ST INF	324859	R	083118	CO F 122ND INF CAMP GREENE NC
310913	R	082618	WAREHOUSE CAMP WHEELER GA	325037	E	021518	PACKED
310952	R	082618	WAREHOUSE CAMP WHEELER GA	325105	R	083018	WAREHOUSE CAMP WHEELER GA
310982	R	083118	CO F 122ND INF CAMP GREENE NC	325563	R	083118	CO H 122ND INF CAMP GREENE NC
311018	R	082718	CO E 121ST INF CAMP WHEELER GA	326460	R	083018	WAREHOUSE CAMP WHEELER GA
311079	R	082618	WAREHOUSE 106TH AMMO TRAIN	326787	R	083018	WAREHOUSE CAMP WHEELER GA
311106	R	082618	WAREHOUSE CAMP WHEELER GA	326829	R	082618	WAREHOUSE 106TH AMMO TRAIN
311298	R	083018	WAREHOUSE CAMP WHEELER GA	327124	R	082618	WAREHOUSE 106TH AMMO TRAIN
311534	W	061318	SA DAILY FUNCTION TEST	327465	R	082618	WAREHOUSE 121ST INF CMP WHEELER
311647	R	082718	CO D 122ND INF CAMP WHEELER GA	327719	R	082718	CO B 122ND INF CAMP WHEELER GA
311860	R	082618	WAREHOUSE SUP CO 121ST INF	328091	E	111022	AUGUSTA ARS (OVERHAULED)
311898	R	082618	WAREHOUSE 106TH AMMO TRAIN	328184	R	082618	WAREHOUSE SUP CO 121ST INF
311940	R	082618	WAREHOUSE CAMP WHEELER GA	328913	R	082618	WAREHOUSE 106TH AMMO TRAIN
311943	R	083118	CO F 122ND INF CAMP GREENE NC	329054	R	082618	WAREHOUSE CAMP WHEELER GA
311982	R	082618	WAREHOUSE CAMP WHEELER GA	329132	R	082618	CO A 122ND INF CAMP WHEELER GA
312202	R	082718	CO E 121ST INF CAMP WHEELER GA	329587	R	082718	CO D 121ST INF CAMP WHEELER GA
312216	R	082718	CO F 121ST INF CAMP WHEELER GA	329850	R	082618	WAREHOUSE 106TH AMMO TRAIN
312265	R	082618	CO A 122ND INF CAMP WHEELER GA	330349	R	082618	WAREHOUSE 106TH AMMO TRAIN
312268	R	083118	CO H 122ND INF CAMP GREENE NC	330799	R	083018	WAREHOUSE CAMP WHEELER GA
312384	R	082718	CO F 121ST INF CAMP WHEELER GA	331149	E	050118	WATERTOWN ARS (TESTED)
312533	R	111022	AUGUSTA ARS (OVERHAULED)	331593	R	082618	WAREHOUSE 121ST INF CMP WHEELER
312752	W	061318	SA DAILY FUNCTION TEST	331619	R	083018	WAREHOUSE CAMP WHEELER GA
312804	R	082618	WAREHOUSE 106TH AMMO TRAIN	331660	R	082618	WAREHOUSE 106TH AMMO TRAIN
312981	R	082618	WAREHOUSE 122ND INF CMP WHEELER	331683	E	050118	WATERTOWN ARS (TESTED)
313125	R	083118	CO E 122ND INF CAMP GREENE NC	331742	R	083018	WAREHOUSE CAMP WHEELER GA
313129	R	082618	WAREHOUSE 106TH AMMO TRAIN	331863	E	040118	CO I 112TH INF CAMP HANCOCK
313141	R	082718	CO C 121ST INF CAMP WHEELER GA	"	E	042318	REVIEWED BY ENGR BUREAU
313210	R	083118	CO F 122ND INF CAMP GREENE NC	331891	R	082718	CO M 122ND INF CAMP WHEELER GA
313496	R	082618	WAREHOUSE 106TH AMMO TRAIN	332574	R	082618	WAREHOUSE CAMP WHEELER GA
313539	R	082618	WAREHOUSE CAMP WHEELER GA	332601	R	083018	WAREHOUSE CAMP WHEELER GA
313542	W	061318	SA DAILY FUNCTION TEST	332758		051131	APG
313584	R	082618	WAREHOUSE CAMP WHEELER GA	333149	E	042418	REVIEWED BY ENGR BUREAU
313680	R	082618	WAREHOUSE SUP CO 121ST INF	"	E	050118	WATERTOWN ARS (TESTED)
313703	R	083018	WAREHOUSE CAMP WHEELER GA	333270	R	082618	WAREHOUSE SUP CO 121ST INF
313791	R	082718	CO C 122ND INF CAMP WHEELER GA	334296	E	050118	WATERTOWN ARS (TESTED)
313803	R	082618	WAREHOUSE CAMP WHEELER GA	334393	E	021518	PACKED
313885	R	082718	CO I 122ND INF CAMP WHEELER GA	334602	R	082618	WAREHOUSE 106TH AMMO TRAIN
314359	R	082618	WAREHOUSE 106TH AMMO TRAIN	334935	R	083118	CO G 122ND INF CAMP GREENE NC
314575	R	082618	WAREHOUSE SUP CO 121ST INF	335041	R	083118	CO E 122ND INF CAMP GREENE NC
315048	R	082618	WAREHOUSE 106TH AMMO TRAIN	335471	R	082618	WAREHOUSE 106TH AMMO TRAIN
315077	R	082618	WAREHOUSE SUP CO 121ST INF	335967		072418	48TH CO 164TH DEPOT BRIG
315362	E	021518	PACKED	336489	E	021518	PACKED
315451	R	082718	CO B 122ND INF CAMP WHEELER GA	336546	E	042418	REVIEWED BY ENGR BUREAU
315873	R	082618	WAREHOUSE SUP CO 121ST INF	"	E	050118	WATERTOWN ARS (TESTED)
315979	R	082618	WAREHOUSE CAMP WHEELER GA	336732	R	082618	WAREHOUSE CAMP WHEELER GA
316149	R	082718	CO M 122ND INF CAMP WHEELER GA	336826	E	021518	PACKED
316230	R	082718	CO F 121ST INF CAMP WHEELER GA	337188	R	082618	62ND BRIGADE HQ CAMP WHEELER GA
316499	R	082618	WAREHOUSE SUP CO 121ST INF	338250	R	082618	WAREHOUSE SUP CO 121ST INF
316813	R	082718	CO F 121ST INF CAMP WHEELER GA	338445	R	082618	106TH AMMO TRAIN CAMP WHEELER
316973	R	083118	CO E 122ND INF CAMP GREENE NC	338925	E	041018	CO K 110TH INF CAMP HANCOCK
317018	R	082618	WAREHOUSE SUP CO 121ST INF	340224	R	082618	CO A 122ND INF CAMP WHEELER GA
317076	W	061318	SA DAILY FUNCTION TEST	340301	R	090918	4TH TRENCH MORTAR BATTY
317130	R	083118	CO H 122ND INF CAMP GREENE NC	341339	E	060818	CO L 1ST PIONEER INF
317303	R	083118	CO G 122ND INF CAMP GREENE NC	341375	R	083118	CO G 122ND INF CAMP GREENE NC
317768	R	083018	WAREHOUSE CAMP WHEELER GA	341927	R	082718	CO D 122ND INF CAMP WHEELER GA
317947	R	082618	WAREHOUSE CAMP WHEELER GA	342247	E	031218	FA VELOCITY TEST
318320	R	083018	WAREHOUSE CAMP WHEELER GA	343740	R	082718	CO C 121ST INF CAMP WHEELER GA
318499	R	082718	CO B 122ND INF CAMP WHEELER GA	343767	R	082618	WAREHOUSE 106TH AMMO TRAIN
318533	R	082618	WAREHOUSE 106TH AMMO TRAIN	344296	E	040418	CO H 110TH INF CAMP HANCOCK
319427	E	042418	REVIEWED BY ENGR BUREAU	"	E	042318	REVIEWED BY ENGR BUREAU
"	E	050118	WATERTOWN ARS (TESTED)	"	E	050118	WATERTOWN ARS (TESTED)
320345	R	082718	CO B 122ND INF CAMP WHEELER GA	355420	E	040218	CO M 109TH INF CAMP HANCOCK
320492	R	083118	CO H 122ND INF CAMP GREENE NC	"	E	042318	REVIEWED BY ENGR BUREAU
321050	R	082618	WAREHOUSE 106TH AMMO TRAIN	"	E	050118	WATERTOWN ARS (TESTED)
321051	R	083018	WAREHOUSE CAMP WHEELER GA	357398	E	111022	AUGUSTA ARS (OVERHAULED)
321212	E	031218	FA VELOCITY TEST	361327	E	060818	CO L 1ST PIONEER INF
321294	R	083018	WAREHOUSE CAMP WHEELER GA	365080	E	041818	CO C 309TH INF CAMP DIX
321348	R	082718	CO D 122ND INF CAMP WHEELER GA	368517	E	040518	CO M 111TH INF CAMP HANCOCK
321691	R	082618	WAREHOUSE 121ST INF CMP WHEELER	"	E	042318	REVIEWED BY ENGR BUREAU
322505	R	082618	WAREHOUSE 106TH AMMO TRAIN	"	E	050118	WATERTOWN ARS (TESTED)
322641	R	083018	WAREHOUSE CAMP WHEELER GA	370287	E	060818	CO L 1ST PIONEER INF
322671	E	031218	FA VELOCITY TEST	372817	E	041018	CO F 309TH INF
"	E	031518	FA ACCURACY TEST	373124	R	111022	AUGUSTA ARS (OVERHAULED)
322752	R	111022	AUGUSTA ARS (OVERHAULED)	376376	R	111022	AUGUSTA ARS (OVERHAULED)
322995	R	082618	WAREHOUSE 106TH AMMO TRAIN	377138	R	111022	AUGUSTA ARS (OVERHAULED)

Model Code(s): E = Eddystone R = Remington W = Winchester

Serial	Model	MMDDYY	Usage	Serial	Model	MMDDYY	Usage
377264	E	041010	CO L 110TH INF CAMP HANCOCK	512926		051131	APG
"	E	042318	REVIEWED BY ENGR BUREAU	513964	E	081018	CO G 152ND INF CAMP SHELBY
"	E	050118	WATERTOWN ARS (TESTED)	514443	W	052438	HOSP FOR DEF DELINQUENTS TO RIA
379016	E	042318	REVIEWED BY ENGR BUREAU	515402		051131	APG
"	E	050118	WATERTOWN ARS (TESTED)	515943	W	081935	US DETENTION FARM MILAN TO RIA
379301	E	042318	REVIEWED BY ENGR BUREAU	516795	W	081935	US DETENTION FARM MILAN TO RIA
"	E	050118	WATERTOWN ARS (TESTED)	517594	W	081935	US DETENTION FARM MILAN TO RIA
381345	E	040218	CO L 110TH INF CAMP HANCOCK	518555	W	052438	HOSP FOR DEF DELINQUENTS TO RIA
"	E	042318	REVIEWED BY ENGR BUREAU	519192	W	081935	US DETENTION FARM MILAN TO RIA
"	E	050118	WATERTOWN ARS (TESTED)	519540	R	082618	WAREHOUSE SUP CO 121ST INF
386147	E	041018	CO I 112TH INF CAMP HANCOCK	519798	W	052438	HOSP FOR DEF DELINQUENTS TO RIA
"	E	042318	REVIEWED BY ENGR BUREAU	520246	W	081935	US DETENTION FARM MILAN TO RIA
"	E	050118	WATERTOWN ARS (TESTED)	521275	W	081935	US DETENTION FARM MILAN TO RIA
388129	E	041818	CO C 309TH INF CAMP DIX	522946	W	081935	US DETENTION FARM MILAN TO RIA
388270	E	041818	CO C 309TH INF	524565	W	081935	US DETENTION FARM MILAN TO RIA
389349	E	041818	CO B 312TH INF CAMP DIX	524805	W	081935	US DETENTION FARM MILAN TO RIA
391310	E	040218	CO H 109TH INF CAMP HANCOCK	525118	W	052438	HOSP FOR DEF DELINQUENTS TO RIA
"	E	042318	REVIEWED BY ENGR BUREAU	526723	W	081935	US DETENTION FARM MILAN TO RIA
391727	E	042318	REVIEWED BY ENGR BUREAU	527692	W	052438	HOSP FOR DEF DELINQUENTS TO RIA
"	E	050118	WATERTOWN ARS (TESTED)	533633	W	052438	HOSP FOR DEF DELINQUENTS TO RIA
392449	E	041018	CO F 310TH INF	535073	W	052438	HOSP FOR DEF DELINQUENTS TO RIA
393096	E	040618	CO C 110TH INF CAMP HANCOCK	543065	W	081935	US DETENTION FARM MILAN TO RIA
"	E	042318	REVIEWED BY ENGR BUREAU	543526	W	052438	HOSP FOR DEF DELINQUENTS TO RIA
393469	R	111022	AUGUSTA ARS (OVERHAULED)	550705	E	082318	CO C 151ST INF
393803	E	042318	REVIEWED BY ENGR BUREAU	570121	E	062818	SA DAILY FUNCTION TEST
"	E	050118	WATERTOWN ARS (TESTED)	577457	E	111022	AUGUSTA ARS (OVERHAULED)
395363	E	041018	CO F 310TH INF	577956	E	062818	SA DAILY FUNCTION TEST
396818	E	041018	CO E 312TH INF	582980	E	090718	113TH TRENCH MORTAR BATTY
397388	E	041018	CO F 310TH INF	585420	E	091118	17TH INF
398704	E	042918	MP CAMP DIX	607011	E	090918	CAMP SHELBY
399588	E	041818	CO B 312TH INF CAMP DIX	610331	E	082918	CO L 152ND INF CAMP SHELBY
399754	E	060818	CO L 1ST PIONEER INF	645313	E	082018	SMALL ARMS FIRING SCHOOL
401741	E	041018	CO F 309TH INF	654620	E	062818	SA DAILY FUNCTION TEST
404213	E	041818	CO B 312TH INF CAMP DIX	685650	E	062818	SA DAILY FUNCTION TEST
404323	E	041018	CO D 309TH INF	688145	E	062818	SA DAILY FUNCTION TEST
404737	E	041018	CO F 310TH INF	688960	E	062818	SA DAILY FUNCTION TEST
407076	E	041018	CO F 310TH INF	695678	E	062818	SA DAILY FUNCTION TEST
410074	E	060818	CO L 1ST PIONEER INF	700466	E	062918	SA DAILY FUNCTION TEST
412284	E	041018	CO F 310TH INF	707687	E	090918	CAMP SHELBY
412517	E	041818	CO B 312TH INF CAMP DIX	714406	E	062818	SA DAILY FUNCTION TEST
415227	E	060818	CO L 1ST PIONEER INF	732395	E	111022	AUGUSTA ARS (OVERHAULED)
420839	E	041818	CO B 312TH INF CAMP DIX	773334	E	072318	CAMP DEVENS (STOCK TEST)
427185	E	060818	CO L 1ST PIONEER INF	846063	E	082918	MG-SMALL ARMS SECT
"	W	111022	AUGUSTA ARS (OVERHAULED)	892574	E	082918	MG-SMALL ARMS SECT
436144	E	060818	CO L 1ST PIONEER INF	894953	E	082918	MG-SMALL ARMS SECT
441414	E	060818	CO L 1ST PIONEER INF	908107	E	082918	MG-SMALL ARMS SECT
445984	E	060818	CO L 1ST PIONEER INF	933054	E	111022	AUGUSTA ARS (OVERHAULED)
453922	E	060818	CO L 1ST PIONEER INF	938889	E	111022	AUGUSTA ARS (OVERHAULED)
458176	E	060818	CO L 1ST PIONEER INF	941522	E	111022	AUGUSTA ARS (OVERHAULED)
467143	W	052438	HOSP FOR DEF DELINQUENTS TO RIA	944471	E	111022	AUGUSTA ARS (OVERHAULED)
478368	E	111022	AUGUSTA ARS (OVERHAULED)	946466	E	111022	AUGUSTA ARS (OVERHAULED)
478557	R	092435	US NW PENITENTIARY LEWISBURG	955446	E	111022	AUGUSTA ARS (OVERHAULED)
490763		051131	APG	960461	E	111022	AUGUSTA ARS (OVERHAULED)
491405	W	082135	US SW REFORMATRY EL RENO TO RIA	961579	E	111022	AUGUSTA ARS (OVERHAULED)
493652	W	082135	US SW REFORMATRY EL RENO TO RIA	963516	E	111022	AUGUSTA ARS (OVERHAULED)
503567		051131	APG	976601	E	111022	AUGUSTA ARS (OVERHAULED)
505008		051131	APG	977167	E	111022	AUGUSTA ARS (OVERHAULED)
507674	R	082618	WAREHOUSE SUP CO 121ST INF	1042895	E	111022	AUGUSTA ARS (OVERHAULED)
507936	W	052438	HOSP FOR DEF DELINQUENTS TO RIA	1063419	E	111022	AUGUSTA ARS (OVERHAULED)
509925	W	052438	HOSP FOR DEF DELINQUENTS TO RIA	1155319	E	111022	AUGUSTA ARS (OVERHAULED)
512353	W	052438	HOSP FOR DEF DELINQUENTS TO RIA	1163794	E	111022	AUGUSTA ARS (OVERHAULED)
512879	W	081935	US DETENTION FARM MILAN TO RIA				

Model Code(s): E = Eddystone R = Remington W = Winchester
Total Entries: 1,470

Caution!

While we take reasonable measures to ensure the accuracy of serial number data reported here and in our other publications, there is a certain error rate associated with the transcription and entry of the large amount of data we are handling. Therefore, you are advised against paying premium prices for firearms based on a listing alone, without a supporting letter. In all cases before furnishing letters, we go back to the original records and confirm the data in the listing.

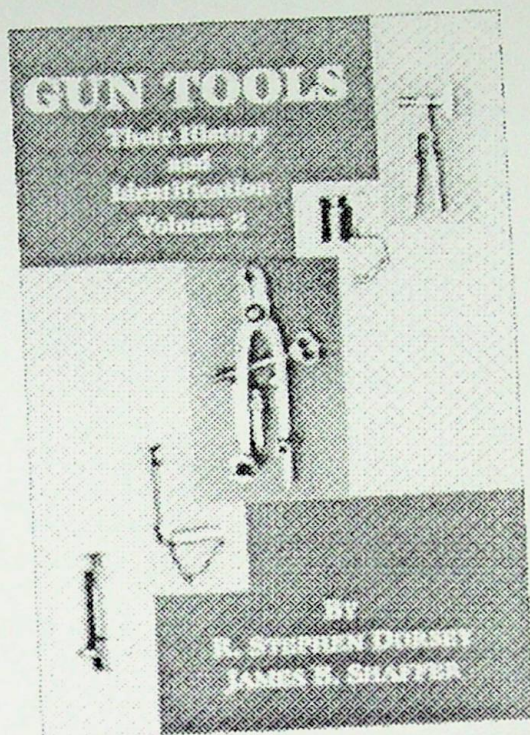
Miscellaneous Model 1922 Rifles
Cited in Ordnance Dept. and U.S. Coast Guard Records

Serial	Model	MMDDYY	Usage	Serial	Model	MMDDYY	Usage
543	M2	040737	USCG CMDR N B HALL	6041	M1	063027	USCG ACADEMY (ON HAND)
559	M2	102534	USCG AIR STA ST PETERSBURG	6062	M1	070128	USCGD CONNYNGHAM (ON HAND)
"	M2	080835	USCG (INQUIRY)	6065	M1	070128	USCGD CONNYNGHAM (ON HAND)
1453	M1	041333	DAMAGED	6133	M1	070628	USCGC APACHE (ON HAND)
4665	M2	102638	USCGC TALLAPOOSA (ON HAND)	6694	M1	030531	UNIV OF VERMONT
4676	M2	070137	USCGC COLFAX (ON HAND)	7313	M1	100527	HATCHER REAR SIGHT
4721	M2	060537	USCG SEATTLE DIV (DESTROYED)	9342	M1	032830	FT OMAHA (CRACKED BOLT)
4745	M1	072036	USCGC FREDERICK LEE (ON HAND)	9607	M1	110227	USCG SECT BASE 6 (CHARGED)
4830	M2	033139	USCG CGM H B RODMAN	9626	M1	031730	USCGC PAMLICO TO USCGC CARRABAS
"	M2	033040	USCG CBM E D MURRAY	9630	M1	070128	USCGC TIGER (ON HAND)
4858	M2	071541	USCGC RUSH (CHARGED)	9653	M1	070130	USCGC PAMLICO (ON HAND)
4899	M2	033040	USCG CBM E D MURRAY	9712	M1	063029	USCGC TALLAPOOSA (ON HAND)
4923	M1	112838	USCG SHARK RIVER STA	9724	M1	070138	USCG BILOXI AIR STA
4962	M2	102638	USCGC TALLAPOOSA (ON HAND)	9756	M1	110227	USCG SECT BASE 6 (CHARGED)
4989	M2	070138	USCGC CG-412 (ON HAND)	9865	M2	063039	USCGC EWING (ON HAND)
5025	M2	063038	USCG BASE ELEVEN	9902	M1	061535	USCGPB RUSH FROM USCGC ESCANARA
5055	M2	070138	USCGC CG-265 (ON HAND)	9905	M1	062635	USCGPB RUSH FROM USCGC WOLCOTT
5802	M1	063027	USCG ACADEMY (ON HAND)	9922	M1	070129	USCGC WOODBURY (ON HAND)
5882	M1	063027	USCG ACADEMY (ON HAND)	9926	M1	070139	USCG DEPOT (IN STOCK)
5911	M1	070830	USCG DEPOT TO USCGC PAMLICO	9966	M1	061527	USCGC HARRIET LANE (ON HAND)
5915	M1	070127	USCGD TERRY (ON HAND)	9967	M1	070129	USCGC FAUNCE (ON HAND)
5919	M1	102229	USCGD ROE TO USCGC TRIPPE	9978	M1	120429	USCGC MCLANE (RECEIVED)
5933	M1	063027	USCG ACADEMY (ON HAND)	13377	M1	062735	ACCIDENT
5952	M1	070628	USCGC APACHE (ON HAND)	13746	M1	120136	WASH DC HIGH SCHOOLS (MISSING)
5954	M1	063027	USCG ACADEMY (ON HAND)	13749	M1	120136	WASH DC HIGH SCHOOLS (MISSING)
5955	M1	063027	USCG ACADEMY (ON HAND)	14373	M1	120136	WASH DC HIGH SCHOOLS (MISSING)
5957	M1	063027	USCG ACADEMY (ON HAND)	14383	M1	100236	ACCIDENT
5959	M1	070127	USCGD TERRY (ON HAND)	14388	M1	120136	WASH DC HIGH SCHOOLS (MISSING)
5965	M1	020227	USCG DEPOT TO DESTROYER FORCE	14476	M1	120136	WASH DC HIGH SCHOOLS (MISSING)
5976	M1	063027	USCG ACADEMY (ON HAND)	14556	M1	120136	WASH DC HIGH SCHOOLS (MISSING)
5977	M1	063027	USCG ACADEMY (ON HAND)	14606	M1	061535	USCGPB RUSH FROM USCGC ESCANARA
5987	M1	102229	USCGD ROE TO USCGC TRIPPE	14732	M1	120136	WASH DC HIGH SCHOOLS (MISSING)
5993	M1	090426	USCGD DAVIS (ON HAND)	14824	M1	120136	WASH DC HIGH SCHOOLS (MISSING)
5998	M1	090426	USCGD DAVIS (ON HAND)	14892	M1	120136	WASH DC HIGH SCHOOLS (MISSING)
6006	M1	020227	USCG DEPOT TO DESTROYER FORCE	17639	M1	100739	USCG COOS BAY
6034	M1	063027	USCG ACADEMY (ON HAND)	17723	M2	033040	USCG CBM E D MURRAY

Model Code(s): M1 = M1922M1 M2 = M2
Total Entries: 72

Miscellaneous M1 Carbines
Cited in Ordnance Dept., USN, USMC, and OSS Records

Serial	Model	MMDDYY	Usage	Serial	Model	MMDDYY	Usage
24		042842	SA DEVELOPMENTAL MODEL	1423195		101044	USS APA54 (SURVEYED)
27		042842	SA DEVELOPMENTAL MODEL	1423781		101044	USS APA54 (SURVEYED)
29		042842	SA DEVELOPMENTAL MODEL	1451354		031543	INTERCHANGEABILITY TEST
83380		101044	USS APA54 (SURVEYED)	1452310		031543	INTERCHANGEABILITY TEST
106461		101044	USS APA54 (SURVEYED)	1452936		031543	INTERCHANGEABILITY TEST
188609		031543	INTERCHANGEABILITY TEST	1453792		031543	INTERCHANGEABILITY TEST
239631		031543	INTERCHANGEABILITY TEST	1454206		031543	INTERCHANGEABILITY TEST
253130		031543	INTERCHANGEABILITY TEST	1551980		031543	INTERCHANGEABILITY TEST
261828		031543	INTERCHANGEABILITY TEST	1552530		031543	INTERCHANGEABILITY TEST
270053		031543	INTERCHANGEABILITY TEST	1552821		031543	INTERCHANGEABILITY TEST
338222		101846	1ST MARINE AIRCRAFT WING	1553000		031543	INTERCHANGEABILITY TEST
482665		101846	1ST MARINE AIRCRAFT WING	1553060		031543	INTERCHANGEABILITY TEST
555067		101846	1ST MARINE AIRCRAFT WING	1664026		031543	INTERCHANGEABILITY TEST
734156		081144	15TH AIR FORCE	1665581		031543	INTERCHANGEABILITY TEST
960514		101846	1ST MARINE AIRCRAFT WING	1665826		031543	INTERCHANGEABILITY TEST
1030915		031543	INTERCHANGEABILITY TEST	1666052		031543	INTERCHANGEABILITY TEST
1031584		031543	INTERCHANGEABILITY TEST	1666411		031543	INTERCHANGEABILITY TEST
1032573		031543	INTERCHANGEABILITY TEST	1756283		111744	OSS MARITIME UNIT
1033586		031543	INTERCHANGEABILITY TEST	1908990		102043	STAMPED ADJ REAR SIGHT TEST
1034101		031543	INTERCHANGEABILITY TEST	1921222		102043	STAMPED ADJ REAR SIGHT TEST
1063638		101846	1ST MARINE AIRCRAFT WING	1952657		012744	OSS MARITIME UNIT
1187553		010245	7TH INTERCHANGEABILITY TEST	1953466		020144	OSS MARITIME UNIT
1200059		010245	7TH INTERCHANGEABILITY TEST	"		112144	OSS MARITIME UNIT
1218801		010245	7TH INTERCHANGEABILITY TEST	1955073		022544	OSS MARITIME UNIT
1324057		010245	7TH INTERCHANGEABILITY TEST	2012557		101044	USS APA54 (SURVEYED)
1367310		031543	INTERCHANGEABILITY TEST	2067817		061664	124TH FIGHTER GRP (DAMAGED)
1368044		031543	INTERCHANGEABILITY TEST	2379695		030448	USMC SAN DIEGO (ACCIDENT)
1368815		031543	INTERCHANGEABILITY TEST	2886769		062048	USMC CAMP LEJEUNE (DAMAGED)
1368866		031543	INTERCHANGEABILITY TEST	3317184		122843	MAJ P J JENSEN
1369430		031543	INTERCHANGEABILITY TEST	3638768		092344	USMC - CAMP PENDLETON
1395399		040444	USS APA54 (SURVEYED)	3872651		072444	OSS MARITIME UNIT
1408674		101044	USS APA54 (SURVEYED)	"		072844	OSS MARITIME UNIT
1421711		101846	1ST MARINE AIRCRAFT WING	4126054		100863	FA TEST WEAPON
1422494		090144	USS APA54 (SURVEYED)	4333959		111744	OSS MARITIME UNIT



JUST RELEASED !!

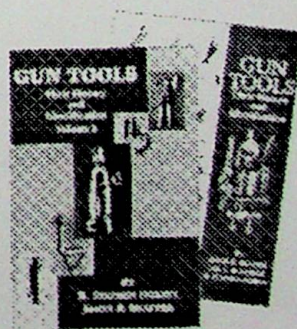
VOLUME 2

**GUN TOOLS:
THEIR HISTORY AND IDENTIFICATION**
by
**R. Stephen Dorsey
and
James B. Shaffer**

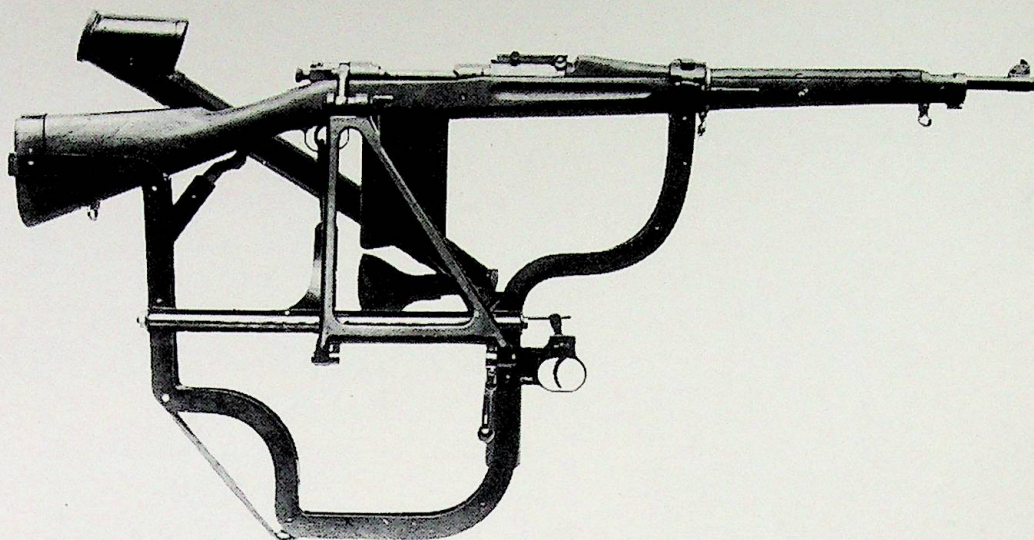
- * Over 800 new photographs
- * New Confederate and U.S. tools
- * Gun tools from major private collections : H.M. Tower of London,
the Imperial War Museum, and Pattern Room of Nottingham.
- * Gun tools from the royal courts of Europe to the battlefields of the
20th Century
- * New categories of gun tools such as Aiming and Optical Devices,
Loading Aids, Fuze Wrenches, and more.

Volume 2 \$30, ppd in U.S.

Collectors' Library
P.O. Box 263
Eugene, OR. 97740



WANTED



SPRINGFIELDS

1903 Service Rifles — 1903 to 1945
1903 Sniper Rifles
1903 Hoffer Thompson .22
Springfield .22 Rifles — 1922 to M-2

will pay a premium for the following Springfields:

T-Model Springfields in mint condition.
Heavy Barrel Springfields listed and original.
International Match Springfields listed and original.
1903 S & C Type National Match Rifle with documents.
Original M1 Garand Rifles.
Antique Springfields from 1812 to 1898.
All related accessories and parts.

I will appraise your collection free of charge. (will travel)

PETER CARDONE

Antique & Collectors Arms

Trap and Skeet Inc.

Old Rt. 52, Stormville, NY 12582

914-221-9016

TOP PRICES PAID

GUNS

SCOPES

ACCESSORIES