

*Renaissance
Waff*

U.S.

MARTIAL ARMS Collector

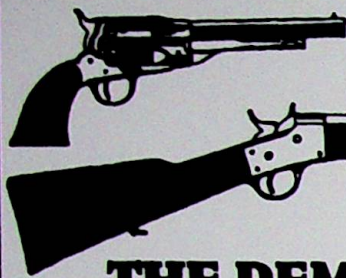
and *Springfield Research Newsletter*



Number 76 April 1996

\$7.50





You Are Invited To Join

THE REMINGTON SOCIETY OF AMERICA

An active organization devoted to the collecting and the study of
Remington firearms, ammunition and related artifacts.

- Quarterly, 40 page, well-illustrated Journal
- Annual Meeting at the Sahara Gun Show
- Mini-RSA Meetings throughout the U.S.
- Annual 3-Day Educational Seminar

Dues are \$30 per year, plus a \$5, one-time initiation fee.

Write for application, or call:

REMINGTON SOCIETY OF AMERICA

130 W. South Boundary

Perrysburg, Ohio 43551

(419) 874-2288

Thomas J. Pearce

STUDENT AND COLLECTOR

SPECIALIZING IN

U.S. MAGAZINE RIFLE AND CARBINE

MODELS OF 1892 THROUGH 1899

ACCOUTERMENTS • BAYONETS • CARTRIDGES

MANUALS • UNUSUAL VARIATIONS

(216) 826-0442

P.O. Box 892 Berea, OH 44017



The Society of
American Bayonet Collectors

- Established 1987
- Covers all bayonets from Colonial to present
- Canadian, British, and European as well as American members

- Quarterly *Journal* with "Mailcall" (Q&A, etc.) column and articles
- Annual Meeting in conjunction with MACA Gun Show — hospitality, banquet, displays, "Show & Tell"

Annual dues \$25 (\$35 outside U.S.). Send request for membership application to:

Roy P. Anderson, Secretary
Society of American Bayonet Collectors

P.O. Box 234

East Islip, N.Y. 11730

EDITOR & PUBLISHER
Franklin B. Mallory

CIRCULATION MANAGER
Franklin B. Mallory

U.S. MARTIAL ARMS COLLECTOR

and *Springfield Research Newsletter*



Number 76

April 1996

A quarterly publication of
SPRINGFIELD RESEARCH
SERVICE, P.O. Box 4181, Silver
Spring, MD 20904. Printed in U.S.A.
Send changes of address and all
other material to this address.

Subscription price \$25 per year,
including First Class postage
anywhere in the world. Air mail
postage \$10 per year additional.

Phones:

Voice: 301/622-4103
FAX: 301/622-3480
Modem: 301/622-2247
Fidonet: 1:109/417
E-Mail: frank.mallory@srs.
blkcat.com

ADVERTISING: Collector cards or
arms-related business cards: \$10 per
issue. Commercial advertisers, please
write for rate card.

© 1996, SPRINGFIELD
RESEARCH SERVICE. All rights
reserved.

Cover: Smith & Wesson Aircrewman
revolver s.n. C279155; marked
"Revolver, Lightweight, M13". With
equally rare "USAF" holster. Photo
courtesy Ronald H. Jones.

2 MISCELLANEOUS NEWS AND NOTES

3 LETTERS RECEIVED & SENT

11 CONSERVATION, FIREARMS, AND
MICROCRYSTALLINE WAX TREATMENT
by Doug Wicklund

13 GUNS "LETTERED" DURING CURRENT PERIOD

15 SERIAL NUMBER DATA

OSS Ithaca M1911A1 Pistols 15

Ithaca M1911A1 Deliveries of 1944/45 19

Miscellaneous Automatic Pistols 23

Miscellaneous News and Notes

Research During This Period

I finished reviewing the microfilms of documents discovered during the "regionalization" of the Springfield Armory records; there is no significant serial number data in these records.

Made another pass through the records of old forts, finding little serial number data but a few other interesting items (e.g., some of the Thompson-LaGarde cartridge development documents missing from the Ord. Dept. files).

I went through some of the Coast Guard records and discovered that they hold a significant amount of serial number data.

Still to come: more Sharps data, based on the work of Jerry Coates.

Ithaca Shipping Documents

We have finally gotten the Ithaca M1911A1 and military shotgun data into a form that can be entered into the computer, but it is still a tedious job. Thanks to Pat Redmond and Bruce Markowitz for financial and technical assistance in this project.

The Ithaca delivery data will eventually be made available in diskette form, separate from our regular data bases.

High-Standard Deliveries

We have also obtained a microfilm of High-Standard shipment records going back to 1932. The military delivery data (all of which seems to show merely "C. O., Springfield Armory" or "War Department") will also be added to our data bases.

New Book

GENERAL CUSTER and his SPORTING RIFLES, by C. Vance Haynes, Jr., will be of interest to all fans of the famed general as well as those interested in early Springfield (and Remington) sporting rifles. This small (100 pp.) book is very readable and shows some good detective work; also, that much research is still needed. Published by Westernlore Press, P.O. Box 35305, Tucson AZ 85740.

Contributors

Thanks to Charlie Pate, Scott Duff, and Doug McChristian for furnishing copies of official serial number documentation. ‡

SPRINGFIELD MODEL 1903 SERVICE RIFLE PRODUCTION AND ALTERATION 1905 - 1910

By C. S. Ferris and John Beard

The early armory changes and how to recognize them.

74 pages, 45 photos, soft cover, 6"x9".

\$12.50 plus \$2.00 shipping:

C. S. Ferris

P. O. Box 420

Arvada, Colorado 80001-0420

TRADING POST

- **Wanted:** Carry case for Pedersen Device. "Storm Queen" scope covers for Kollmorgan scope. Grey fiber-glass stock for M1 Garand. Thomas J. Mulligan, 222 Sunset Ave., Island Park NY 11558.
- **For Sale:** Downsizing to about one half, an extensive personal collection of M1903 Springfield Rifles. Available are Excellent NRA Sporter, NM Rifle, M1 and M2 22s, USMC M1941 Sniper, DCM M1903A1 Type Service Rifles, M1903 and M1903A1 Service Issue Rifles. Includes a (1915) NRA 1903 and early (1905) M1903 with B&B Experimental Rear Sight, (See Brophy - page 466). For Details Contact: Fred EWALT, North Stonington, CT. 860-535-1733.
- **For Sale:** Springfield M1903 USMC Sniper rifle. Unertl 8X USMC Scope. SA/GAW stock, 2-38 barrel, Match buttplate. Wayne Gagner (301) 365-7813.

Letters Received & Sent

Model 1867 Cadet Rifle

I picked up a second Model 1867 Cadet trapdoor rifle. It is very uncommon to find these, since only 424 were manufactured and they rarely surface at gun shows.

With two in hand, several interesting items were noted with regard to this Cadet model. Besides adhering to the usual description (1867 dated lockplate, etc.), there is also a lightening hole bored into the stock under the butt plate. Each of the two have it, and the hole measures at $\frac{3}{4}$ " in diameter and $4 \frac{1}{16}$ " in depth.

Also, the cartridge for this model is apparently a little different. I had acquired a standard .50-45 Cadet cartridge with a .660" diameter rim. Surprisingly, it did not fit the gun. The rim hung up on the bottom of the receiver just short of chambering, although it nicely fit the Model 1869 Cadet rifle. Earlier this year, an article in the "Gun Report" mentioned a cartridge of the same era (and length) but with a smaller rim that might be the one of choice for the '67 Cadet. They identify it as a .50-45 Remington Navy carbine cartridge with a .640" diameter rim. Will have to obtain a specimen and try it.

W.R., Wisconsin

Remington M720 Rifle

Enclosed please find a copy of a letter from Remington (*to the Naval Weapons Support Center, Crane, Indiana, dated June 21, 1976*) in reference to the martial Remington Model 720 rifle. I hope it will be of interest to you. (*letter follows*)

B.A.P., Ohio

RIFLE, CALIBER 30.06 REMINGTON MODEL 720

DESIGNER, DEVELOPER AND MANUFACTURER - REMINGTON ARMS COMPANY
IN 1940 REMINGTON MADE MODIFICATION AND DESIGN CHANGES TO THE BASIC

ENFIELD BOLT ACTION RIFLE. THEY TOOLED UP FOR THE MANUFACTURE OF WHAT THEY HAD ASSIGNED MODEL NUMBER 720. THEN CAME PEARL HARBOR AND THE UNITED STATES WAS AT WAR.

SERVICE RIFLES TO EQUIP OUR RAPIDLY EXPANDING ARMED FORCES COULD NOT BE MANUFACTURED FAST ENOUGH, ESPECIALLY THE NEW M1 RIFLE. REMINGTON WAS CONTRACTED TO BUILD THE SPRINGFIELD 1903A1 AS A SUBSTITUTE SERVICE RIFLE. THE U.S. NAVY WAS ON LOW PRIORITY FOR PROCUREMENT OF ANY KIND OF RIFLE THAT COULD BE CONSIDERED A SERVICE RIFLE. AT THIS TIME REMINGTON HAD BEGUN THE FIRST MANUFACTURING RUN ON THE MODEL 720 AND WAS FACED WITH THE HIGHEST PRIORITY ON THE MANUFACTURE OF THE SPRINGFIELD NOT TO MENTION OTHER HIGH PRIORITY CONTRACTS FROM THE U.S. AND BRITISH GOVERNMENTS. THE U.S. NAVY NEEDED A RIFLE THAT COULD BE SUBSTITUTED AS A SERVICE RIFLE AND AWARDED A CONTRACT TO REMINGTON FOR PROCUREMENT OF THE ONLY MANUFACTURING RUN OF THE 720 IN CALIBER 30.06 WHICH WAS 2,427. AFTER THESE WERE COMPLETED THE LINE WAS CLOSED DOWN AND THE SPACE UTILIZED FOR MORE URGENT NEEDS AND THE 720 WAS NEVER PRODUCED AFTERWARDS. THE MODEL 720 WAS NEVER USED IN COMBAT, AND WAS HELD IN STORAGE AS WAR RESERVE MATERIAL. THEY WERE RELEASED IN 1964 FOR USE AS AWARD TROPHIES UNDER THE TITLE OF "SECRETARY OF THE NAVY" AND "SECRETARY OF DEFENSE" BY THE NAVY AND MARINE CORPS IN THEIR COMPETITION IN ARMS PROGRAM.

<u>PRODUCTION</u>	1941 - 427
	1942 - 1022
	1943 - 973
	1944 - 5

SPECIFICATIONS

CALIBER 30.06
OPERATION: MANUALLY OPERATED
TURNBOLT. FIRING PIN
COCKS ON OPENING OF
BOLT.
FEED: STAGGERED INTERNAL
MAGAZINE
SPECIAL NOTE: INTRINSIC VALUE
\$1,000.00

M1 NM Markings

I picked the M1 up a while back. It was 'as new' including crusty dried lubriplate in the receiver recesses when I bought it. All of the parkerizing on all of the moving parts was perfect. The bore was heavily greased, and was perfect. I suspect it might have been test fired after it was assembled, but not fired after that. It looks perfect. Actually, it looks *too* perfect.

All of the NM parts are genuine USGI rather than the typical current production after-market 'NM' junk that's floating around today.

The stock has a Defense Acceptance Stamp (eagle & stars) but has what appears to be a tung oil finish rather than linseed oil finish and looks more like a piece of furniture rather than a rifle stock. The last four digits of the SN are hand painted in the barrel channel of the stock and on the back of the trigger group with white paint. I've only taken it out of the stock once to lube and inspect it when I first bought it. The bedding job was text book perfect and still tight enough to require a rubber mallet to close the trigger guard.

The front handguard wasn't gutted and still has the liner intact. The handguard is secured to the lower band.

The barrel is marked in the normal place with NM and has a barrel date of 4 54. I've handled a lot of M1 barrels made by SA, but this one has a heart shaped stamp on it near the drawing number. I've never seen one of these before. It has a NM op rod made by RA, if I remember correctly, but what really struck me as odd is the NM marked gas cylinder. I've never seen one that was marked. It's reamed properly where the lower end fits around the barrel, but the little 1/8" high NM under the stacking swivel mounting point made me a bit suspicious.

Another thing that bothered me was the rotating hood rear sight aperture. I didn't think that they started making them till 1963. That kinda clashes with the 4 54 barrel date. It was my understanding that all rifles built for the NMs used new barrels. Could they have still been using barrels made in 1954 in the early 60's? Oh, the receiver is a Springfield the SN is 3553434. I ran the SN thru NCIC without any hits. Assuming it's genuine, where could it have come from? The DCM doesn't have any record of it, it's not listed as stolen, could it have been awarded to a shooter as a prize or something? The 'prize' idea might have justified the stock and metal finish. This thing doesn't look like it belongs on a firing line.

N.L., via the Internet

I don't know how this rifle left the Service; possibly it was one of the MINM rifles sold to Greece or some other country and later returned here.

My guess is that it was one of the "canned" rifles that were converted to NM rifles by Springfield; this would possibly explain the lower number and earlier barrel on a rifle that was obviously assembled later than that.

The heart mark on the barrel identifies the year it was assembled, but I have not found the correspondence between marks and years; this practice started in 1959, so it is obviously later than that. The "NM" stamp on the flat tang to rear of stacking swivel originated in 1958; hooded aperture sights were adopted in 1959, and the last 4 digits of the serial number were inscribed inside the trigger housing starting in 1960. Some SA 1954 and 1955 barrels were used on 1960 NM rifles. The finish you describe sounds like the silicone modified varnish (equivalent to Herter's Satinsilicol) that was applied by Springfield to NM rifles starting in 1958.

Taken together, the indications are that your MINM rifle was assembled by Springfield Armory in 1960 or 1961, using an earlier receiver.

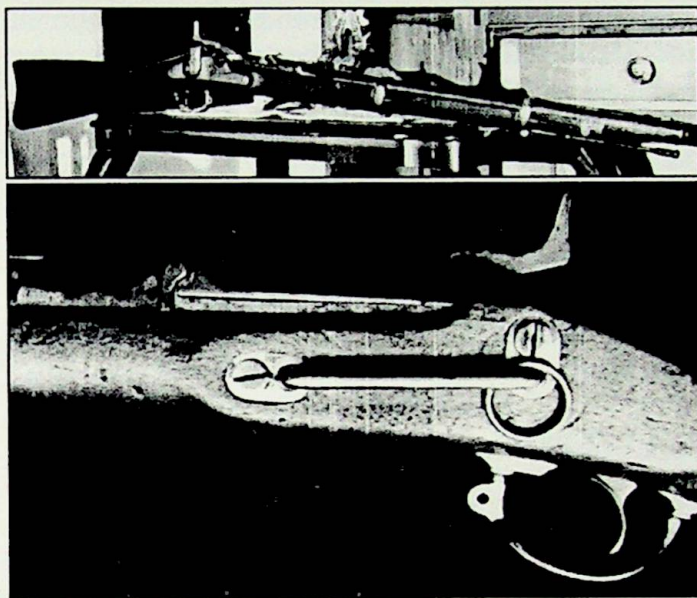
Wells-Fargo Springfield?

I bought an Springfield Carbine with Allin conversion in Germany. My request is to determine this carbine, which has the following features:

Cal. .50-70 Gov., marked on lock plate 1863, US-Springfield w/Eagle. Serial number on barrel and receiver 19545. Marked on breech block 1870,

US, Eagle head. Firing proof cartouche: P in circle into the stock near trigger plate. Full length: 40 inches; barrel length 19 inches.

Question: Is this short carbine a fake or really manufactured in about 1870; the carbine seems to be more an early modification of a percussion rifle? — see the fotos.



Next question is very important concerning marks on right side: Could this gun be from "Wells Fargo and Co."?

R. H., Germany

Your rifle appears to be a shortened U.S. Model 1868 rifle, with sling bar and ring added. We have no information on this particular rifle or any having been sold to Wells, Fargo & Co.

Many guns have been marked "W. F. AND CO" to increase the value, but that doesn't mean that this particular one is not genuine. Wells, Fargo acquired the Overland Mail Co. in 1866, and perhaps "SMC" stands for another mail company that was acquired by them. Possibly, one of our readers will know.

High-number Winchester M1917 Rifle

M1917 Winchester # 506171. Finish parkerized. Barrel Winchester 12-18.

Stock was Bishop style Sporter, but all metal

orig. military in exc. condition.

Info sent because serial # higher than listed in books.

R.H.K., California

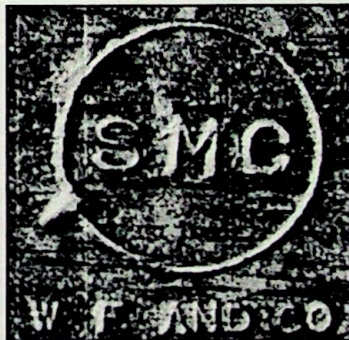
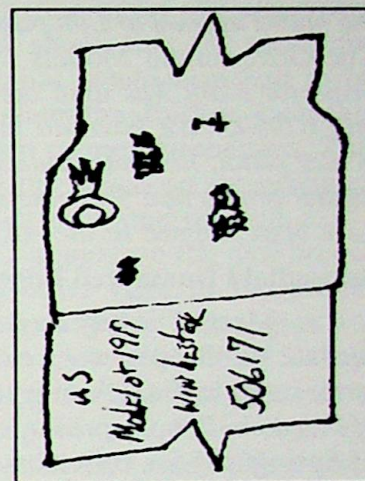
I think I found the reason for many of these serial number overruns (and resultant duplication between manufacturers in some cases). An Ordnance Dept. memo in the mid-'20s questioned the practice of allowing contractors to deliver plus or minus 10% of the quantity specified in the contract, pointing out that virtually all contractors took advantage of this provision to deliver an extra ten percent.

Because most of the published serial number ranges are based on the contracted (allocated) amount, they would be low by up to ten percent. This would suggest that M1917 Winchester numbers went up to 505000, a little short of yours.

WWI M1911 Pistol Markings

I have a few questions regarding the M1911 Colt pistol in my possession. I have several books on the M1911 and the Serial Numbers of Martial Arms, but not the book by Clawson, which I regard as a must. If your records from Colt have any information on inspector initials, proof marks, and reference numbers on the M1911, I need to know if Colt inspectors used the "Eagle" with wings closed, and the small initial with "S5" on any of their markings. The 467991 serial number doesn't have the customary "EEC", "JMG", "WGP", or "GHS" inspector initials used on arms during World War I production. This "Eagle" is looking left, and is above the magazine release button as on the others. On the trigger guard is a number "69" on the bottom right. Other than these markings and the traditional Colt slide markings, it has a "G" on the barrel.

My guess is that these are proof marks for test firing the weapon, but further study is required.



Do your records coincide with this small inspection marking?

W. R., Jr., Louisiana

Unfortunately, we have little official documentation on the marks applied to Colt pistols. Goddard in his book The Government Models states that the eagle head inspector mark was used between serial nos. 303000 and 629500. We have no information on your particular pistol; however, unless it was withdrawn from regular production for some special purpose, it would have been shipped to the AEF on Oct. 3, 1918.

Springfield Numbered Edged Weapons Survey

Most of us rely on information published by the late Bill Brophy when examining or categorizing modern Springfield Armory edged pieces. In *Arsenal of Freedom*, Brophy presents the production records of Springfield for collectors and historians alike.

Occasionally, additional information on Springfield edged pieces surfaces and is offered, such as with David Arch in the last edition of the Society of American Bayonet Collectors Journal, and Phil Leveque or Frank Mallory in previous editions. Often questions are raised that may or may not be answered.

Because I am sure that unpublished information exists, I am going to attempt to solicit information beyond what Brophy offers on modern Springfield Armory edged pieces. I am offering to share this information through future letters or articles.

The first initiative I wish to undertake is to identify production ranges by date and serial number. Because the Springfield Armory appears to have manufactured bayonets, knives, bolos and sabers by fiscal year dates, yet may have stamped serial numbers by calendar year dates, it is often confusing as to how many blades may bear a certain year date; whether there are serial number overlaps by year date; and, if in the case of some blades, do any year dates exist even though production records suggest otherwise.

I have developed a survey form listing common Springfield Armory edged pieces (i.e., M1904 Hospital Corps knives, M1905 bayonets, M1909 and M1910 bolos, and M1913 sabers) which bear both a year date and serial number. Please review your collection or inventory to note and record the lowest and highest serial numbers you have. If you

have just one piece for that year date, please include it as it still may be helpful in determining approximate start and end dates for year date serial number ranges. While information you provide will be presented for publication, your name will be held in confidence unless you state otherwise.

The survey form allows for quick copying to mail or FAX. If you wish to send further/additional information that may be beneficial for a later article, it will be catalogued and credited.

This survey is also being conducted through the SABC.

Please contact the following to request a survey form, or to submit information without a form.

Tom Wiltzius
N6501 State Road 187
Shiocton WI 54170
FAX 414/730-7510

Presentation Model 1855 Pistol-Carbine?

I would appreciate any help you can give me on this 1855 pistol-carbine.

I believe this gun is a presentation piece of some kind, as the work appears to be of high caliber. The grip is finely checkered with a raised wooden shield in the middle; also, the top of the barrel band has been cut into a shield.

J.J.H., Pennsylvania

In 1857, the Supt. of Springfield Armory proposed to finish 10 or 12 muskets by browning and adding "hair trigger" for presentation to key members of Congress. While we have no information on special finishing of Model 1855 pistol-carbines, it is conceivable that some of those were also made for presentation.

Commercial Handgun Procurements during WWII

I enjoyed Bob Vivas' fine article. Here are a few minor comments:

The "freeze" on civilian arms manufacture and sales appears to have been, in some cases, fairly brief. Iver Johnson and H&R were soon allowed to continue but subject to availability of production resources and those resources were usually devoted to war production of some sort. I don't know about Iver Johnson, but H&R did resume production and sale to civilians of .22 caliber revolvers. The records on .38 caliber revolvers are mostly missing. I know they did continue producing them during the war

and that some were bought by Defense plants, the US Maritime Commission, etc. I don't know that any .38s were sold to civilians.

The Defense Supply Corp. (DSC) did buy several hundred .22 caliber "Sportsman" revolvers for resale just as they did with S&W's and Colts, but the H&R records also show what appears to be purely civilian sales. Some shipments of "DSC" guns were made directly to the end customers rather than to the DSC, and it's not clear in the records whether or not these were DSC guns. But the total number of guns shipped exceeds the number ordered by the DSC. I also found a 1944 letter where the Ordnance Department was responding to a handgun request from Greece (I believe). The Ordnance Department told them they could obtain handguns from Iver Johnson and H&R and that the Army was not controlling those manufacturers.

Regular versions of S&W and Colt revolvers were shipped to the DSC initially under the DSC contracts. But these shipments were completed by December 1942 and all subsequent orders had to be made by the Army. Only 5,000 Colt Official Police revolvers were purchased by the DSC. The Commando resulted from the Army's first order of 20,000 Colt revolvers for the DSC when the price Colt quoted the Army was too high. Colt then proposed the war-time variation as described in the article. Bob is quite correct about the 2" versions of both revolvers. Colt produced only about 3,500 Commandos in 2" and S&W produced far less, approximately 1,000 - 1,500. In both cases most went to the military. By far, most of the short barrel revolvers we see today were converted after the war.

C.P., via the Internet

Thanks for the info, Charlie. As you know, I have been trying to obtain serial number data pertaining to these outside purchases from the BATF.

Remington Maynard Lock Conversions; RA-P

I was interested in your remarks concerning the Remington Primer Lock alteration in the Jan. 1996 issue of U.S. MARTIAL ARMS Collector. There have always been some things about these weapons which interested me.

The first has to do with the address on the lockplate. The earliest ones (1855) are marked with the Herkimer address which appears to have been

used on all Remington-made military arms until 1855. My own specimen also has an 1855 date, but an Ilion address. This appears to nail down the change in marking to some time in 1855.

A careful examination of my own specimen, which appears unissued, shows that the recess for the lock plate and internal mechanism had to be deepened to accommodate the thicker lockplate with its internal Maynard primer mechanism. This is clearly revealed since the recess on my specimen is clean and has not been saturated with oil.

The initials "J.T." appear on the new breech forging and at the top outer edge of the primer gate. Does the contract specify that Remington was responsible for the complete alteration of the weapons or only providing the lock and breech forging? Since these weapons are found in both smoothbore and rifled versions, I assume that when the weapons left Remington they were only smoothbores altered to percussion. Flayderman indicates that Frankford Arsenal did the rifling; Fuller says Bridesburg. When I bought my specimen, there were three available; two were smoothbore and one rifled. I chose the rifled version, but all were in what appeared to be unissued condition.

My own specimen has additional markings which I have not seen on the smoothbore specimens. These consist of a "V" over "45" on the barrel tang to the rear of an 1856 date. The same letter and number combination appears on the right side of the altered muzzle band which has had the brass musket sight removed from the rear strap and a new iron blade front sight mounted on the front strap. I also have another M1816 musket altered to percussion by the Belgian method and rifled. It too has a letter-number combination, "I 14" on the tang of the breech screw. Unfortunately, the muzzle band was missing from this piece when I acquired it and I had to replace it with a standard musket band, so I was unable to see if the same marking system existed. The long range rear sights are identical on the two weapons.

While on the subject of alterations, have you ever come across the contract with Hewes & Phillips? I assume that these alterations were supposed to be rifled and sighted, but most of them that I have seen, including my own specimen, seem to be smoothbore, but with new front and rear sights.

Finally, the RAP question just seems to go round and round. I just sold a M1903-A3 by Remington which had all metal Parkerized and seemed to be an arsenal overhauled piece. The stock had been sanded and almost all marks obscured except that "FJA" could still be discerned. In new, heavily struck letters, was the mark "RA-P" which would seem to indicate a Raritan Arsenal rebuild. It seems that the dash confuses things a bit since I have an M1 Carbine rebuilt at Augusta Arsenal and it is marked "AAP" with no dash.

It could be that "RAP" was used at some point in time to indicate a Raritan Arsenal rebuild and that "RA-P" was used at a later time. Then again, "RAP" could represent three initials of an actual inspector at Remington, having nothing to do with Raritan Arsenal. Campbell indicates that he has observed the mark on Springfields and Eddystone M1917s as well as WWII Remington arms. I must admit that when I first acquired my M1903-A3. I thought that the RA-P meant Remington Arms - Proved. Ain't we got fun?

P.L., Virginia

I have some notes on the Maynard musket conversions, but unfortunately failed to make copies of any of that material. Also, my notes start at 1857; so I may have missed some earlier material.

Some time in early 1857, there was a report on inspection of Maynard locks made by Remington for altered muskets — 1,500 locks and 1,500 breech pins. Frankford Ars. was making the musket alterations, including rifling. I didn't record the name of the inspector, but "J.T." was probably John Taylor, who is more famous for inspecting Colt percussion revolvers. In May of 1857, the USMC agreed to take 300 Maynard Primer rifled muskets altered by FA.

In 1858, there was a report on FA's alteration of muskets that stated that "Hind sights are being furnished by Harpers Ferry and Springfield Armory". 16,748 muskets were being altered.

Those marks on Model 1816 muskets were discussed in an earlier Newsletter, after I found a report that listed a number of them. They are somewhat akin to serial numbers; but they have also been observed on Model 1816 bayonets, and my theory is that they were primarily intended to allow the (non-interchangeable) bayonets of that period to be mated to the proper

musket.

I haven't found anything on Hewes & Phillips, but that doesn't mean it isn't there.

As for the "RA-P" marking on Remington '03A3 rifles, I have obtained no further information on this.

Unmarked Remington '03 Rifle

In January's #75 Newsletter, a T.G.J., Illinois, wrote to you about a 1903 Remington he has in his collection. I'm sure this is a pilot model or a sample rifle made up for some executive of the Remington Company or just for their reference collection. The lack of any military inspectors marks pretty much assures one of the fact that this particular rifle was never meant to be sold to the U.S. Government. As to the finish of the rifle, the green color is quite correct. I have a very early rifle and have observed a couple of others in collections and they were all dark green. The blued parts are typically, the lower band, trigger, swivels, cut-off, rear sight, all the screws and the complete bolt, which by the way, appears to be rust blued only on the very early guns.

I would like to share information with T.G.J. if at all possible. Please feel free to give him my address.

Larry Reynolds
1124 Cloverleaf Rd.
El Cajon CA 92019

USS PENNSYLVANIA M&P?

I recently purchased a Smith & Wesson model 1905, fourth change, .38 special revolver (s.n. 630347). It is clearly marked on the left side, U. S. NAVY, and down the back strap it has the engraving: U.S.S. PENNSYLVANIA BB 38. This revolver has about 90% original finish and appears absolutely authentic in all aspects.

I wrote Smith & Wesson for a historical research letter, and was surprised at the findings of Mr. Jinks. This revolver was shipped to the Massachusetts State Prison in Norfolk, Mass., on November 4, 1931. I got in touch with Mr. Richard Sarmer, arms superintendent at the prison, who said that records are retained for only seven years at the prison.

I have all four volumes of your Martial Arms serial number reference books, and I have

noticed several entries of rifles and handguns that are designated to have been WWII donations to the U.S. Navy. Could this be the case with this particular revolver?

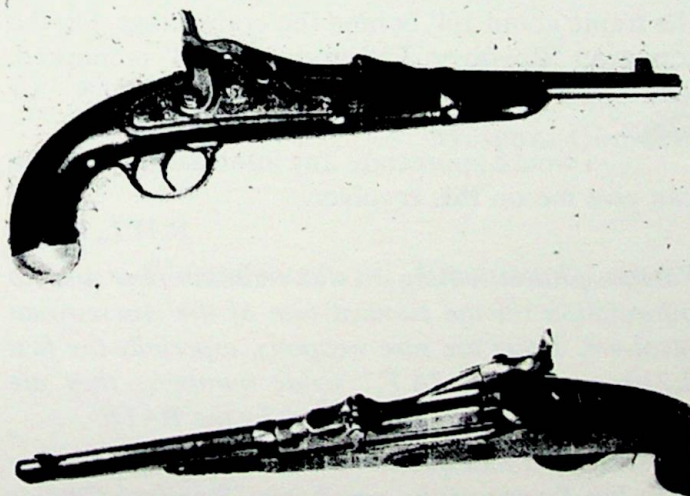
G.W.J., North Carolina

Sorry, we have no information on M&P revolvers within this serial number range; also, nothing on donations from the Mass. State Prison to the U.S. Navy.

Considering that there is no official basis for the inscriptions that appear on this revolver, their authenticity appears very doubtful.

Recently, some M1905 bayonets stamped with various USN ship names were brought to our attention; and in that case, it was definitely established that those were spurious markings made for the purpose of enhancing their value.

Trapdoor .45 Pistol?



I recently acquired a single shot pistol that I think is an original Springfield 1869 Allin-system pistol that has been modified. I am trying to find any information about the original pistol and whether or not any of these pistols were later modified by the Armory. I would appreciate very much receiving any information on this pistol that you, or any MARTIAL ARMS COLLECTOR reader, may have. I have read that there is a fine article about this pistol in the American Rifleman, "Springfield Breech Loading Pistols," by Colonel B. R. Lewis, but there was a mistake in the issue date given, so I have not been able to locate the article. I talked to you on the phone recently about the pistol and per

our conversation, I have enclosed two photographs and a written description of the pistol in hopes that you may have either general information, or serial number information on this particular pistol, in your files. Any fees for your information will be gladly remitted.

RECEIVER

Serial Number 10261 (on top, just ahead of joint with the breech screw). Serial Numbers are 0.10 inches high. The only other mark on receiver is a single punch mark on the left side just above the wood stock, 0.65 inch back of front of receiver. The receiver is the same as the description in the Flayderman's Guide. "The Armory utilized the receiver of the model 1868 rifle; only the forward section (receiver ring) was altered by thinning down to lighten". Length of receiver is 5.45 inches. Width of receiver is 1.285 inches (top rear near serial number) and 1.032 at the front.

BREECH BLOCK

Markings are "U. S./Model/1873" (no eagle head over crossed arrows). Lettering is 0.05 inches high. Low arch. Square shoulders. Thin wall firing pin housing (0.10 inch measured at top). Comb Height is 0.40 inch (measured from top of firing pin shelf to top of firing pin housing). Color - black. Width is 1.075 inches. The sighting notch in the top of the breech block binge, unlike the rifle sighting notch that is round, in this pistol is shaped like an inverted V. There is no indication that there was ever a round sighting notch in this breech block.

BARREL

There are no marks on barrel. I have not looked for markings under the wood. The outside diameter at the muzzle is 0.70 inch. A liner has been added to the barrel to reduce bore to 0.45 inches. Outside diameter of liner at muzzle is 0.55 inch. Chambered for a shortened 45-70 GOVT. case, 1.475 inches in length. Case is necked down to hold two 0.457 round lead balls. Front sight base and blade are one piece. Length of base 0.50 inches (front to back). Distance top of barrel to top of front sight, 0.45 inch.

LOCKPLATE

Beveled edges. Date 1863 stamped into lockplate to rear of hammer. Spread Eagle with arrows and olive branches and two-line U.S. SPRINGFIELD stamped ahead of hammer. SPRING-

FIELD spans 1.6 inches. The lockplate has the mottled blue coloring of the case harden process.

HAMMER

Checkering on hammer spur is enclosed within shield with flat top and pointed bottom. The tumbler has two positions.

STOCK

The wooden stock is made in two pieces with a very fine joint line to connect the handle. There are no inspector cartouche or other stamps on the outside of the stock. The stock appears to have never been sanded or refinished. The side of the stock under the lock plate and the opposite side are flat. The Butt of the wooden handle is covered by a brass cap. A brass strip is inset in the top of the handle and extends from the end of the breech screw tang to the brass cap. There is a single barrel band retainer spring in the bottom of the stock forward of the barrel band.

TRIGGER

Trigger is curved and smooth. Trigger guard plate is one piece, and the rear portion extends the full length of handle to the brass cap.

Please send any available information to:

Jim Stewart
7708 S. 28th. W. Ave.
Tulsa, OK 74132-2676

The following information was provided by Burt Kellerstedt, who is very familiar with the Trapdoor pistols:

RECEIVER — Should not be numbered. Should be marked "Dec/1869" on top of receiver ring flat. Rear sight should be cut into receiver forward of hinge — a 60° V cut.

BREECH BLOCK — should be marked "1869/2/crossed arrows/U.S.". Should have a 60° V-cut into top of hinge.

BARREL — originally .50 cal., chambered for the .50/70 cartridge. Nine inches long.

FRONT SIGHT — dovetailed into barrel about 1/2" from muzzle. Front sight base is about 7/16" wide. Front sight blade is German silver.

BARREL BAND — should be about 1/8" forward of receiver.

BUTT CAP — made of solid bronze.

Col. Lewis' article titled "Springfield Breech-Loading

Pistol" appeared in the September 1957 issue of the American Rifleman.

Based on an examination of the photos you sent and your description, it does not appear that your gun was originally one of the single-shot pistols made by Springfield Armory in 1869.

S&W Aircrewman Revolvers

In your travels, have you ever run across any information on M13 Aircrewman revolvers?

I have in my collection a S&W Aircrewman in good original condition with only slight holster wear on sharp corners. Do you know how many S&Ws were procured for the Aircrewman program? Are there any records indicating how many were destroyed?

The serial number, C 279155, is stamped on the butt, inside the right hand grip, on the cylinder, and on the underside of the barrel. The crane number is 10605. A "P" is stamped on left side of the frame about 1/4" behind the crane hinge. On the top strap "Revolver, Lightweight, M13" is marked. The backstrap is marked "Property of U.S. Air Force".

I would appreciate any information that you can give me on this revolver.

R.H.J., Conn.

Sorry, we have nothing on this serial number and no information on the survival rate of the Aircrewman revolvers. These are rare weapons, especially the first 1,210 made with "A.F." serial numbers; they are classified as "Curios and Relics" by the BATF.

We submitted your questions to Rick Nahas, co-author with Jim Supica of the new book, "Standard Catalog of S&W" (\$29.95 from Old Town Station Ltd., 13400 Santa Fe Trail Dr., Lenexa KS 66285). Following are Rick's comments on your particular weapon:

"The revolver in question appears to have been shipped to either Norton Air Force Base, Cal., or Wilkens Air Force Base, Ohio, about March 1954 and possibly no later than April 9, 1954. The markings sound correct. I entered it into our log."

New Mexico Governor's Krag

I recently purchased a Krag 1899 Carbine with a 1901 cartouche, serial number 360123. It came with documentation that it was in the estate of Miguel Antonio Otero, Territorial Governor of the

New Mexico Territory. Gov. Otero was in office from 1897 to 1906.

Some of the information I have is from a New Mexico school book that states that Governor Otero sent 400 troops to the 1st Volunteer Cavalry and they comprised 40% of the Rough Riders under Teddy Roosevelt's command at San Juan Hill. The text also states that Teddy Roosevelt, while President of the United States pushed hard to get Statehood for New Mexico.

What follows next is conjecture on my part and is of no value, however, I see a connection here between Teddy Roosevelt and Miguel Otero. I take note in your volume 1 publication in the 03 Rifle section of early models being given to Governors. I could find no such entries in the Krag section in any of your 4 volumes, but I can speculate that the 1901 dated Carbine was indeed presented to Governor

Otero by the U.S. Government around the time that Roosevelt became president.

My questions for you are: Do you have any knowledge of presentations to Governors of Krags, specifically Governor Otero? Do you have any research on serial number 360123? Do you have any suggestions on how I can research this historical link further?

K.A., Missouri

Sorry, we have nothing on carbine no. 360123. Krag rifles (not carbines) were indeed presented to the governors, but that was much earlier.

We have some readers who specialize in New Mexico arms, and perhaps they will come forward with some information on this. It would also be possible to research the Ordnance records to obtain information on acquisition of Krag carbines by New Mexico, but it is very doubtful that this serial number would turn up.

Museum Conservation Techniques 101:

Conservation, Firearms, and Microcrystalline Wax Treatment

Doug Wicklund

Curator of Collections, National Firearms Museum

Conservation is the museum term used to describe the care and maintenance of objects, both while in storage and on exhibition. An important part of conservation is its study of museum objects to learn their composition; for when you know what an object is made of, you can better treat the problems that happen when the piece begins to exhibit deterioration. But perhaps the most important part of conservation deals with knowing under what environment the object is presently located and the ideal conditions for long-term stability of the object.

Firearms are viewed as composite artifacts, in that they frequently have more than one type of material used in their construction. Wood, hard rubber, plastic, ivory/bone, leather and many other materials can form parts of firearms, both modern and antique. But the majority of firearms feature ferrous alloys like iron or steel in their makeup that usually cause the majority of problems in their maintenance.

Suppose you have a collection of firearms you want to protect. Storing or exhibiting these pieces at an appropriate temperature and humidity (70°F and 50%

rH) provides one level of protection, but insulating their surfaces from chemical attack may be more important in the long run. Handling anything with bare hands will transfer body oils and skin residues on contact.

Putting a sweaty hand into intimate contact with a metal surface, such as the blued barrel on a mint Smith & Wesson No. 1 First Issue revolver, can result in almost instant corrosion in some cases. Knowing that the frame of this revolver is a silver-plated brass component, one would not expect the same iron rusting corrosion to take place. A simple solution is to use plain white cotton gloves when handling. The white color also allows you to tell if any corrosion is taking place, as any surface "red rust" comes right off on the gloves. The gloves can be easily washed for re-use on a regular basis.

Many museums and collectors have sought a treatment for ferrous alloys that provides effective protection. Any treatment used must not harm the object and must be readily removable. Most oils tend to evaporate fairly shortly after application with little long-term storage potential. Heavy greases tend to be too messy for display purposes and may contain materials that could interact unfavorably with wood or ivory components. Waxes offer the best balance for easy application, safety, reversibility, and long-term protection.

Microcrystalline wax treatment is a technique used by museum conservators to provide an insulating barrier between the surrounding environment and the object. If the object is housed in an environment where industrial byproducts such as sulphur dioxide (as in most major cities, thanks to car exhausts) are readily detectable, ferrous alloys (iron and steel) may be actively attacked by these chemicals. To make iron or steel rust, the presence of moisture and an oxidizing agent is all that is needed. How fast this reaction works depends on the temperature and the surface being attacked. If a barrier is present, much like a coat of paint on an iron bucket left out in the rain, the rusting reaction is slowed because oxygen can't get to the reactive points on the metal.

Choosing a neutral microcrystalline wax such as Renaissance wax eliminates problems that may be encountered with the use of acidic beeswax or harder

waxes that may be impossible to safely apply at room temperature without harming the object. Any mild solvent like acetone or Stoddard's solvent can be used to remove the wax coating at any time. Avoid microcrystalline waxes that have extraneous components like silicone that may prove difficult to remove from wood components.

Use of waxing for protection may be a drawback under certain conditions. Heavy applications over rough surfaces may give a mottled white appearance to the object. Over-application of wax could also form a foundation for mold or fungus growth. Any suitable wax can be evenly applied over the surface and lightly buffed with a smooth lint-free cloth to give a pleasing sheen. The basic concept behind wax application is to provide a thin, protective barrier of wax over all surfaces to insulate the metal beneath from moisture or acidic fingerprints. Waxed firearms should be handled with gloves to protect against scratching that thin protective layer.

Microcrystalline wax under the trade name Renaissance wax can be obtained from most museum supply houses including the following:

Gaylord Bros.
P.O. Box 4901
Syracuse, NY 13221
(800) 634-6307

Light Impressions
Box 940
Rochester, NY 14603
(800) 828-6216

Conservation Resources
88-H Forbes Place
Springfield, VA 22151
(703) 321-7730

Conservation Materials Ltd.
Box 2884
Sparks, NV 89431
(702) 331-0582

Guns "Lettered" During Current Period

The following firearms were documented during the period covered by this issue. If you would like to get in touch with the person a letter was written for, send us your message together with a stamped envelope with blank address. We will affix a label and forward your message. There is no guarantee that you will receive a reply, of course; but we write quite a few letters for dealers, who would no doubt like to hear from someone interested in a particular gun. Make sure that your message contains the serial number and model of the gun you are interested in, and that you furnish separate messages and envelopes if you are interested in more than one. THIS OFFER, FOR GUNS IN THIS ISSUE, EXPIRES ON JULY 1, 1996.

DCM RIFLE & PISTOL SALES

36	M1922 rifle	L. V. Jones
1282789	M1903 NMB rifle	J. P. Tynes
1497506	M1903A1 NM rifle	E. Donaldson
2016687	M1911A1 NM pistol	J. R. Shorter

SPANISH-AMERICAN WAR

74659	M1884 rifle	Co. A 4th Illinois Vol. Inf.
260864	M1884 rifle	Co. K 3rd Nebraska Vol. Inf.
42199	M1896 rifle	Co. D 5th USV Inf.
170658	M1898 rifle	Co. B 34th USV Inf.
173007	M1898 rifle	Co. K 30th USV Inf.
133251	Colt Artillery revolver	Trp. I 1st USV Cav.

ORDNANCE DEPT./U.S. ARMY/IGO

A.F. No. 6	Colt Aircrewman rev.	Sent from Springfield Armory to the Ordnance Office
583126	Colt M1911 pistol (A.J. Savage slide)	Schenectady Army Reserve Depot
106604	Colt M1917 revolver	New Orleans Quartermaster Depot (sold)
493321	M1884 Cadet rifle	So. Dakota Ag. College
359200	M1899 carbine	Sent from Governors Island to Raritan Ars. for sale

CIVIL WAR

36370	Burnside carbine	Co. G 3rd Iowa Vol. Cav.
12038	Colt M1860 revolver	Co. G 13th New York Vol. Cav.
48900	Colt M1860 revolver	Co. G, 1st Maryland Vol. Cav.
65128	Colt M1860 revolver	Co. H 2nd West Virginia Vol. Cav.
68572	Colt M1860 revolver	Co. C 16th Pennsylvania Vol. Cav.
64884	Remington Army revolver	Co. F 6th Michigan Vol. Cav.
36967	Spencer carbine	Co. I 3rd Michigan Vol. Cav.
51487	Spencer carbine	Co. G 14th Kansas Vol. Cav.
59622	Spencer carbine	Co. G 18th New York Vol. Cav.
4617	Union carbine	Co. B 14th Kansas Vol. Cav.

Caution!

While we take reasonable measures to ensure the accuracy of serial number data reported here and in our other publications, there is a certain error rate associated with the transcription and entry of the large amount of data we are handling. Therefore, you are advised against paying premium prices for firearms based on a listing alone, without a supporting letter. In all cases before furnishing letters, we go back to the original records and confirm the data in the listing.

Ithaca M1911A1 Pistols
Shipped to the Office of Strategic Services (OSS) on 1/11/44

Serial	Serial	Serial	Serial	Serial	Serial	Serial	Serial	Serial	Serial	Serial	Serial	Serial
1208766	1230811	1231630	1232187	1232924	1233476	thru	1236024	1236421	1236809	1237211	1237487	
1208917	1230812	1231634	1232197	1232925	1233482	1234266	1236028	1236426	1236823	1237217	1237491	
1209345	1230819	1231637	1232212	1232950	1233505	1234268	1236031	1236427	1236837	1237220	1237493	
1214672	1230821	1231643	1232218	1232956	1233512	1234274	1236033	1236431	1236850	1237225	1237495	
1216566	1230835	1231653	1232223	1232958	1233513	1234276	1236035	thru	1236853	thru	1237499	
1216698	1230857	1231658	1232224	1232963	1233519	1234284	1236045	1236433	1236873	1237227	1237500	
1216703	1230885	1231660	1232234	1232981	1233524	1234363	1236047	1236436	1236881	1237234	1237502	
1217205	1230890	1231668	1232237	1232991	thru	1234481	1236054	thru	1236896	thru	1237509	
1218062	1230893	1231672	1232242	1232993	1233526	1234514	1236064	1236438	1236911	1237236	1237510	
1219183	1230921	1231683	1232255	1232994	1233529	1234517	1236085	1236440	1236915	1237244	1237521	
1220955	1230939	1231684	1232288	1233000	1233531	1234519	1236092	1236442	thru	1237245	1237528	
1221693	1230948	1231686	1232292	1233010	1233534	1234523	1236093	1236443	1236917	1237250	thru	
1221941	1230950	1231688	1232310	1233014	1233548	1234538	1236096	1236446	1236919	1237251	1237530	
1222873	1230967	1231691	1232311	1233015	1233550	1234541	1236109	thru	1236925	1237253	1237533	
1223019	1230972	1231696	1232344	1233017	1233554	1234543	1236111	1236448	1236934	1237255	1237539	
1223213	1230975	1231709	1232357	1233024	1233557	1234551	1236117	1236450	1236943	1237256	1237541	
1223305	1230976	1231710	1232363	1233026	1233558	1234556	1236129	1236452	1236955	1237258	1237544	
1223363	1230987	1231715	1232366	1233035	1233566	1234568	1236142	thru	1236959	1237262	1237545	
1224021	1230995	1231718	1232373	1233037	1233572	1234569	1236144	1236454	1236960	1237265	1237549	
1224590	1231013	1231744	1232375	1233044	thru	1234583	1236155	1236458	1236987	1237267	1237551	
1224609	1231015	1231752	1232381	thru	1233574	1234594	1236163	1236462	1236993	1237272	1237552	
1224997	1231062	1231762	1232382	1233046	1233579	1234599	1236165	1236463	1237000	thru	1237559	
1225354	1231064	1231766	1232384	1233048	1233583	1234608	1236169	1236469	1237001	1237274	thru	
1225359	1231081	1231770	1232388	1233051	1233593	1234697	1236172	1236475	1237007	1237283	1237562	
1225419	1231088	1231772	1232389	1233056	1233604	1234706	1236174	1236478	1237010	1237284	1237564	
1225500	1231093	1231774	1232392	1233058	1233609	1234743	1236182	1236489	1237015	1237288	1237571	
1225642	1231108	1231787	1232400	1233063	1233610	1234752	1236188	1236522	1237016	1237289	1237574	
1225651	1231122	1231788	1232401	1233064	1233614	1234757	1236190	1236526	1237019	1237292	1237575	
1225879	1231134	1231791	1232409	1233068	1233619	1235061	1236194	1236529	1237021	1237294	1237577	
1226030	1231139	1231793	1232427	1233069	1233624	1235110	1236212	thru	1237024	thru	1237579	
1226217	1231161	1231796	1232435	1233071	1233631	1235141	1236216	1236532	1237025	1237296	1237583	
1226350	1231167	1231798	1232442	1233093	1233656	1235200	1236218	1236535	1237027	1237300	1237585	
1226359	1231174	1231799	1232453	1233097	1233660	1235205	1236220	1236536	1237031	thru	1237588	
1226950	1231190	1231803	1232454	1233102	1233665	1235217	1236222	1236541	1237036	1237302	1237592	
1226996	1231193	1231804	1232456	1233123	1233667	1235230	1236229	1236547	thru	1237306	1237596	
1227164	1231197	1231832	1232467	1233135	1233668	1235256	1236230	1236548	1237039	1237307	1237599	
1227514	1231199	1231847	1232468	1233141	1233672	1235274	1236232	1236555	1237043	1237310	1237600	
1227596	1231204	1231884	1232475	1233149	1233687	1235387	1236234	1236564	1237045	1237312	1237620	
1227723	1231209	1231891	1232486	thru	1233692	1235388	1236239	1236567	1237051	1237315	1237623	
1227744	1231212	1231901	1232510	1233151	1233694	1235412	1236240	1236571	1237058	1237319	1237627	
1228020	1231247	1231903	1232511	1233155	1233706	1235440	1236246	1236576	1237060	1237323	1237628	
1228170	1231250	thru	1232516	1233157	1233718	1235466	1236249	1236578	1237062	1237331	1237632	
1228236	1231256	1231905	1232517	1233162	1233727	1235551	1236251	1236580	1237063	1237332	1237635	
1228619	1231262	1231922	1232525	1233164	1233737	1235559	1236252	1236583	1237067	1237335	1237641	
1229112	1231263	1231924	1232528	1233166	1233740	1235574	1236258	1236594	1237075	1237336	1237647	
1229183	1231273	1231925	1232531	1233182	1233744	1235575	1236260	1236596	thru	1237339	1237651	
1229299	1231275	1231928	1232552	1233184	1233751	1235582	1236266	1236600	1237078	1237341	1237664	
1229398	1231277	1231933	thru	1233194	1233756	1235636	1236275	1236609	1237080	1237343	1237666	
1229476	1231279	1231934	1232554	1233210	1233762	1235642	1236281	thru	1237085	thru	1237673	
1229653	1231289	1231937	1232557	1233215	1233764	1235666	1236286	1236611	thru	1237366	1237679	
1229663	1231294	1231939	1232559	1233224	1233780	1235677	1236287	1236616	1237090	1237368	1237685	
1229791	1231297	1231940	1232560	1233230	1233785	1235679	1236295	1236617	1237106	1237374	1237686	
1229956	1231302	1231944	1232563	1233231	1233787	1235682	1236296	1236623	thru	1237382	1237690	
1229957	1231312	1231985	1232600	1233248	1233799	1235689	1236300	thru	1237108	1237389	1237692	
1230160	1231393	1231988	1232610	1233249	1233833	1235729	1236301	1236627	1237113	1237392	1237698	
1230231	1231394	1231991	1232611	1233260	1233846	1235761	1236308	1236653	1237125	1237399	1237702	
1230236	1231401	1231993	1232617	1233261	1233850	1235763	1236309	1236655	1237131	thru	1237710	
1230300	1231408	1231995	1232619	1233275	1233852	1235768	1236314	1236658	1237136	1237403	1237712	
1230319	1231419	1231996	1232643	1233286	1233865	1235783	1236318	1236661	1237137	1237412	1237715	
1230350	1231432	1232001	1232656	1233292	1233877	1235787	1236320	1236662	1237139	1237413	1237718	
1230356	1231434	1232003	1232662	1233296	1233912	1235812	1236323	1236664	1237141	1237415	thru	
1230357	1231452	1232009	1232677	1233301	1233916	1235825	1236325	1236673	1237143	1237419	1237720	
1230362	1231460	1232012	1232706	1233304	1233941	1235826	1236328	1236679	1237147	thru	1237722	
1230372	1231511	1232014	1232718	1233307	1233954	1235855	1236330	1236686	1237150	1237421	1237723	
1230393	1231515	1232016	1232721	1233335	1233983	1235879	1236332	1236689	1237153	1237424	1237726	
1230472	1231518	1232018	1232726	1233349	1234002	1235882	1236333	1236704	1237155	1237426	thru	
1230533	1231528	1232019	1232730	1233352	1234008	1235909	1236345	1236708	1237159	1237427	1237728	
1230595	1231530	1232024	1232733	1233365	1234057	1235926	1236347	1236712	1237161	1237429	1237730	
1230614	1231533	1232072	1232739	1233369	1234067	1235927	1236353	1236718	1237166	1237430	thru	
1230675	1231534	1232082	1232762	1233372	1234074	1235941	1236359	1236729	1237169	1237433	1237737	
1230681	1231537	1232088	1232768	1233375	1234077	1235955	1236374	1236732	1237170	1237442	1237740	
1230686	1231539	1232097	1232787	1233381	1234089	1235959	1236376	1236739	1237172	1237446	1237743	
1230694	1231540	1232098	1232790	1233405	1234125	1235973	1236377	1236740	thru	1237452	1237747	
1230697	1231546	1232100	1232795	1233416	1234167	1235984	1236383	1236745	1237175	1237453	1237750	
1230698	1231558	1232122	1232805	1233417	1234168	1235985	thru	1236749	1237178	1237455	1237751	
1230700	1231571	1232124	1232812	1233420	1234172	1235988	1236386	1236751	1237180	1237457	1237754	
1230709	1231574	1232131	1232833	1233422	1234182	1235994	1236390	1236752	1237184	1237460	1237757	
1230722	1231579	1232132	1232842	1233423	1234207	1235996	1236393	1236761	thru	1237466	1237758	
1230733	1231581	1232145	1232848	1233435	1234215	1236001	1236394	1236773	1237186	1237467	1237760	
1230768	1231584	1232155	1232860	1233443	1234221	1236011	1236398	1236786	1237189	1237470	1237762	
1230783	1231613	1232166	1232876	1233445	1234248	thru	1236401	1236791	1237192	1237471		

OSS Ithaca M1911A1 Pistols (Cont'd)

Serial	Serial	Serial	Serial	Serial	Serial	Serial	Serial	Serial	Serial	Serial	Serial
1237791	thru	1238330	1238516	thru	1239430	1239870	thru	1240878	1241057		
1237800	1238073	1238338	thru	1238737	1239117	thru	1239874	1240266	1240561	1240882	1241059
1237805	1238078	1238339	1238519	1238739	1239119	thru	1239441	thru	1240268	1240563	thru
1237806	1238079	1238341	1238524	thru	1239443	1239892	1240270	thru	1240887	1241061	
1237808	1238094	thru	1238526	1238771	1239127	1239444	1239894	1240271	1240567	1240890	1241067
1237811	1238099	1238343	1238531	1238773	1239129	1239446	thru	1240273	1240570	thru	1241069
1237815	1238108	1238345	1238533	thru	1239130	thru	1239914	1240275	thru	1240895	1241070
1237817	1238112	1238347	thru	1238781	1239132	1239452	1239916	thru	1240592	1240897	1241072
1237825	1238116	1238348	1238536	1238783	thru	1239454	thru	1240279	1240594	thru	1241073
1237833	1238120	1238352	1238540	thru	1239149	thru	1239918	1240281	thru	1240899	1241075
thru	1238122	1238355	1238544	1238789	1239151	1239456	1239920	thru	1240600	1240903	1241077
1237836	1238123	1238357	1238546	1238791	thru	1239458	thru	1240286	1240602	thru	1241081
1237841	1238126	thru	thru	thru	1239165	thru	1239940	1240288	1240603	1240906	1241082
1237842	1238127	1238359	1238550	1238793	1239167	1239468	1239943	thru	1240605	1240908	1241085
1237848	1238136	1238362	1238552	1238795	thru	1239471	thru	1240290	thru	thru	thru
1237850	1238141	1238365	1238554	thru	1239184	1239473	1239945	1240292	1240621	1240911	1241100
1237853	1238143	1238368	1238555	1238799	1239186	thru	1239947	1240294	1240623	1240913	1241104
thru	1238146	thru	1238567	1238801	thru	1239495	thru	1240296	1240624	thru	1241107
1237857	1238148	1238373	thru	thru	1239190	1239498	1239955	1240297	1240626	1240919	1241112
1237862	thru	1238375	1238590	1238807	1239192	1239500	1239957	1240299	thru	1240921	1241113
1237865	1238150	1238378	1238592	1238809	thru	thru	thru	1240300	1240635	thru	1241116
1237866	1238154	thru	thru	thru	1239199	1239507	1239965	1240303	1240637	1240923	1241117
1237869	1238155	1238387	1238595	1238814	1239201	1239509	1239967	thru	1240639	1240925	1241120
1237871	1238161	1238389	1238597	1238816	thru	thru	thru	1240314	thru	thru	1241124
1237878	1238164	thru	thru	thru	1239206	1239523	1239971	1240317	1240659	1240927	1241126
1237886	1238165	1238393	1238601	1238831	1239208	1239525	1239973	thru	1240661	1240929	1241127
1237897	1238170	1238395	1238603	1238834	1239209	thru	thru	1240356	thru	thru	1241130
1237902	1238171	1238399	1238606	thru	1239211	1239571	1239982	1240358	1240675	1240933	1241132
1237905	1238178	1238400	thru	1238841	thru	1239573	1239984	thru	1240677	1240935	1241135
thru	1238180	1238405	1238609	1238843	1239220	thru	thru	1240376	1240678	1240936	1241136
1237907	1238183	1238407	1238611	thru	1239222	1239581	1239999	1240378	1240680	1240940	1241138
1237922	thru	1238411	thru	1238848	1239223	1239583	123947	1240379	thru	thru	1241141
1237924	1238187	1238414	1238616	1238850	1239225	thru	1240001	1240381	1240686	1240942	1241145
thru	1238189	thru	1238618	thru	thru	1239635	thru	thru	1240688	1240944	1241147
1237926	1238192	1238417	1238620	1238853	1239227	1239637	1240009	1240384	1240690	thru	1241149
1237928	1238194	1238419	thru	1238855	1239230	thru	1240011	1240386	1240691	1240947	1241151
thru	1238195	thru	1238626	thru	thru	1239645	thru	1240387	1240693	1240950	1241153
1237931	1238197	1238422	1238629	1238858	1239245	1239647	1240022	thru	1240389	thru	1241155
1237939	thru	1238424	1238631	1238860	1239247	thru	1240024	thru	1240698	thru	1241156
1237946	1238201	1238426	1238633	thru	thru	1239707	thru	1240418	1240700	1240957	1241158
thru	1238203	1238429	1238635	1238870	1239249	1239709	1240033	1240420	thru	1240960	thru
1237949	1238206	1238430	thru	1238872	1239251	1239711	1240035	thru	1240712	1240961	1241161
1237955	1238207	1238432	1238640	thru	1239252	thru	1240036	1240422	1240714	1240963	1241164
1237957	1238211	thru	1238642	1238885	1239254	1239715	1240038	1240424	thru	thru	1241166
1237968	1238214	1238435	1238643	1238887	1239255	1239717	thru	thru	1240721	1240969	thru
thru	thru	1238438	1238646	thru	1239257	thru	1240040	1240443	1240723	1240971	1241173
1237970	1238216	thru	1238647	1238919	thru	1239740	1240042	1240445	thru	1240973	1241176
1237973	1238219	1238442	1238649	1238921	1239264	1239742	thru	thru	1240730	1240974	thru
1237979	1238221	1238444	1238651	thru	1239266	thru	1240049	1240457	1240733	1240976	1241178
1237984	1238226	1238445	1238652	1238944	thru	1239752	1240051	1240459	1240734	1240977	1241180
1237986	1238228	1238447	1238654	1238946	1239282	1239754	1240052	thru	1240736	1240981	1241182
1237987	1238230	thru	1238657	thru	1239284	1239755	1240054	1240461	thru	thru	1241183
1237989	1238238	1238449	1238660	1238969	thru	1239757	1240055	1240466	1240761	1240984	1241187
1237990	1238240	1238452	thru	1238971	1239290	1239759	1240057	1240473	1240764	1240988	1241189
1237993	thru	thru	1238662	thru	1239292	1239761	1240058	1240474	thru	1240990	1241190
1237995	1238243	1238455	1238665	1238973	thru	thru	1240060	1240479	1240786	1240992	1241192
1237998	1238245	1238457	1238666	1238975	1239299	1239766	thru	thru	1240788	1240994	thru
thru	thru	thru	1238668	thru	1239301	1239768	1240082	1240481	thru	1240998	1241194
1238000	1238247	1238459	thru	1238978	thru	thru	1240084	1240483	1240794	thru	1241196
1238004	1238252	1238461	1238674	1238980	1239321	1239778	thru	thru	1240796	1241005	thru
1238006	1238255	1238463	1238676	thru	1239323	1239780	1240097	1240489	thru	1241008	1241200
thru	1238261	thru	1238679	1238985	thru	thru	1240099	1240491	1240823	1241011	1241202
1238008	1238262	1238470	1238680	1238987	1239329	1239785	thru	thru	1240827	1241012	1241203
1238010	1238267	1238472	1238682	thru	1239331	1239787	1240134	1240509	thru	1241014	1241205
1238012	1238269	1238474	thru	1239008	thru	thru	1240136	1240511	1240829	1241015	1241207
1238014	1238274	1238477	1238684	1239010	1239337	1239798	thru	thru	1240831	1241017	thru
1238018	1238275	thru	1238686	thru	1239339	1239800	1240157	1240513	thru	thru	1241209
1238019	1238277	1238481	thru	1239024	thru	thru	1240159	1240515	1240834	1241019	1241211
1238021	thru	1238483	1238688	1239026	1239368	1239803	thru	thru	1240836	1241022	thru
1238025	1238280	thru	1238690	thru	1239370	1239805	1240184	1240525	1240848	1241024	1241214
1238028	1238282	1238490	thru	1239030	thru	thru	1240186	1240527	thru	1241027	1241218
thru	1238284	1238492	1238692	1239032	1239375	1239836	thru	thru	1240850	1241028	1241222
1238030	thru	thru	1238694	1239034	1239377	1239838	1240199	1240531	1240852	1241030	1241224
1238033	1238300	1238494	1238695	thru	thru	1239840	1240201	1240533	1240854	thru	1241226
1238036	1238308	1238496	1238698	1239036	1239382	thru	thru	thru	thru	1241036	1241228
1238038	1238311	thru	thru	1239038	1239384	1239848	1240213	1240539	1240857	1241038	1241230
1238039	1238315	1238499	1238712	thru	thru	1239850	1240215	1240541	1240859	thru	1241232
1238044	1238317	1238501	1238714	1239040	1239391	thru	thru	1240542	thru	1241042	1241235
1238049	1238319	1238504	thru	1239042	1239393	1239857	1240236	1240545	1240862	1241044	thru
1238052	1238320	thru	1238719	thru	thru	1239859	1240238	1240547	1240864	thru	1241237
1238063	1238324	1238508	1238723	1239077	1239410	1239860	1240240	1240549	1240865	1241048	1241240
1238065	thru	1238510	thru	1239079	1239413	1239865	thru	thru	1240868	1241050	thru
1238066	1238326	thru	1238728	1239080	thru	1239867	1240250	1240552	thru	thru	1241242
1238071	1238329	1238514	1238730	1239082	1239428	1239868	1240252	1240555	1240872	1241055	1241246

OSS Ithaca M1911A1 Pistols (Cont'd)

Serial	Serial	Serial	Serial	Serial	Serial	Serial	Serial	Serial	Serial	Serial	Serial
1241248	1241379	1241499	1241682	1241816	1241935	thru	thru	1242300	1242438	1242570	1242759
1241250	1241383	1241502	thru	1241817	thru	1242064	1242186	thru	1242440	1242572	1242761
1241251	1241387	1241507	1241690	1241820	1241940	1242067	1242189	1242309	1242442	thru	1242762
1241253	1241389	1241510	1241692	1241821	1241942	thru	thru	1242311	1242443	1242575	1242772
1241256	thru	1241512	thru	1241825	1241945	1242071	1242192	1242313	1242445	1242577	1242778
thru	1241391	1241514	1241695	thru	1241946	1242074	1242194	1242315	thru	1242580	thru
1241263	1241393	1241520	1241697	1241828	1241948	1242076	1242195	thru	1242449	1242584	1242780
1241266	1241395	thru	1241700	1241830	1241949	1242079	1242198	1242325	1242451	1242587	1242784
1241268	1241398	1241523	thru	thru	1241952	1242081	thru	1242327	thru	thru	thru
thru	thru	1241525	1241706	1241832	thru	1242085	1242202	thru	1242455	1242589	1242786
1241276	1241401	1241530	1241709	1241834	1241955	1242087	1242204	1242330	1242458	1242592	1242788
1241278	1241403	1241531	1241710	1241837	1241957	1242089	1242205	1242332	thru	1242596	1242790
1241279	thru	1241533	1241713	1241839	1241959	1242091	1242207	thru	1242462	thru	thru
1241281	1241406	1241535	1241715	thru	thru	1242093	thru	1242337	1242464	1242598	1242792
1241283	1241410	1241536	1241716	1241845	1241974	1242095	1242209	1242341	1242467	1242611	1242794
thru	thru	1241538	1241718	1241849	1241977	thru	1242212	thru	1242469	1242615	1242795
1241285	1241412	1241540	1241720	thru	thru	1242098	1242214	1242348	thru	1242621	1242797
1241287	1241414	1241542	1241721	1241852	1241979	1242100	1242216	1242350	1242473	1242623	1242798
thru	1241415	1241546	1241724	1241855	1241983	1242101	1242217	thru	1242477	1242627	1242802
1241300	1241419	1241548	thru	1241856	1241984	1242109	1242220	1242356	1242479	1242631	1242839
1241302	thru	1241549	1241728	1241858	1241986	1242110	thru	1242358	1242481	1242632	1242843
thru	1241424	1241553	1241731	thru	1241988	1242115	1242224	1242359	thru	1242638	thru
1241305	1241427	1241555	1241735	1241864	thru	1242118	1242227	1242361	1242484	1242639	1242845
1241307	1241428	1241557	1241738	1241866	1241995	1242119	1242228	thru	1242487	1242641	1242848
1241309	1241431	thru	thru	1241867	1241997	1242123	1242230	1242364	1242488	thru	1242850
1241311	1241435	1241559	1241740	1241869	1241998	1242126	thru	1242366	1242492	1242643	1242851
1241312	thru	1241565	1241742	1241870	1242000	thru	1242234	thru	thru	1242645	1242853
1241314	1241437	1241568	thru	1241872	thru	1242131	1242236	1242368	1242497	1242646	1242859
1241315	1241439	thru	1241750	thru	1242006	1242133	thru	1242370	1242500	1242655	1242860
1241317	1241441	1241573	1241752	1241877	1242008	1242135	1242240	thru	thru	1242659	1242862
1241318	thru	1241576	1241753	1241879	1242013	1242137	1242242	1242372	1242504	1242661	thru
1241320	1241445	thru	1241755	1241881	1242016	1242138	thru	1242375	1242506	1242662	1242864
1241322	1241447	1241593	thru	thru	1242017	124213	1242251	thru	thru	1242670	1242867
thru	1241449	1241598	1241759	1241890	1242019	1242140	1242253	1242378	1242508	1242673	1242872
1241326	1241451	thru	1241762	1241892	thru	1242141	1242254	1242380	1242514	1242674	1242876
1241328	1241452	1241609	thru	1241895	1242023	1242143	1242256	1242382	thru	1242681	1242880
1241332	1241456	1241612	1241764	1241896	1242025	thru	thru	thru	1242517	thru	1242881
thru	1241457	1241614	1241766	1241899	thru	1242146	1242259	1242392	1242520	1242683	1242883
1241334	1241459	1241616	thru	1241901	1242027	1242148	1242263	1242394	thru	1242685	1242888
1241336	1241461	1241618	1241769	1241902	1242029	1242150	thru	1242397	1242522	1242686	1242950
1241340	1241462	thru	1241771	1241904	1242030	1242151	1242268	1242400	1242524	1242689	1242972
1241342	1241465	1241631	thru	thru	1242032	1242153	1242271	1242401	1242529	1242694	1242978
1241344	1241467	1241633	1241775	1241907	thru	thru	1242272	1242403	1242532	1242699	1242982
1241346	1241470	thru	1241777	1241909	1242034	1242159	1242274	thru	thru	1242700	1243007
1241348	thru	1241638	1241778	1241910	1242036	1242161	1242276	1242405	1242534	1242702	1243010
1241351	1241473	1241640	1241780	1241912	1242042	thru	thru	1242407	1242538	1242713	1243011
1241352	1241475	thru	1241781	1241914	1242043	1242163	1242278	thru	1242540	thru	1243013
1241359	1241478	1241643	1241783	thru	1242045	1242165	1242280	1242412	1242545	1242716	1243015
1241364	1241481	1241645	thru	1241917	thru	1242168	thru	1242414	thru	1242718	1243023
1241365	1241482	thru	1241789	1241919	1242047	1242169	1242282	1242416	1242550	thru	1243024
1241367	1241486	1241657	1241791	thru	1242050	1242171	1242284	thru	1242554	1242728	1243026
1241369	thru	1241659	thru	1241921	1242051	1242173	thru	1242422	1242557	1242730	1243027
1241371	1241488	1241661	1241805	1241924	1242053	1242176	1242289	1242424	1242559	1242735	1243080
thru	1241491	thru	1241807	thru	1242054	1242178	1242292	thru	1242560	1242737	1243088
1241373	1241492	1241674	1241809	1241928	1242056	thru	1242294	1242428	1242562	1242743	1243159
1241375	1241495	1241676	1241811	1241931	1242057	1242180	1242297	1242431	1242566	1242754	1243279
thru	thru	thru	1241812	thru	1242060	1242182	1242298	thru	1242569	1242755	1243294
1241377	1241497	1241679	1241814	1241933							

Total Entries: 4,640

Ithaca M1911A1 Pistol Shipments
From 5/31/44 to End

Serial	Model	MMDDYY	Usage	Serial	Model	MMDDYY	Usage
1442461	061344	ITHACA TO TOPEKA AAB	1828223	092745	ITHACA TO RARITAN ORD DEP		
1448311	061344	ITHACA TO TOPEKA AAB	1828224	031645	ITHACA TO SA ENG DEPT EXP DIV		
1449377	061344	ITHACA TO TOPEKA AAB	"	092745	ITHACA TO RARITAN ORD DEP		
1449480	061344	ITHACA TO TOPEKA AAB	1828225	031645	ITHACA TO SA ENG DEPT EXP DIV		
1452436	061344	ITHACA TO TOPEKA AAB	"	092745	ITHACA TO RARITAN ORD DEP		
1452534	061344	ITHACA TO TOPEKA AAB	1828226	031645	ITHACA TO SA ENG DEPT EXP DIV		
1453240	061344	ITHACA TO TOPEKA AAB	"	092745	ITHACA TO RARITAN ORD DEP		
1453260	061344	ITHACA TO TOPEKA AAB	1828227	031645	ITHACA TO SA ENG DEPT EXP DIV		
1453279	061344	ITHACA TO TOPEKA AAB	"	092745	ITHACA TO RARITAN ORD DEP		
1453480	061344	ITHACA TO TOPEKA AAB	1828228	031645	ITHACA TO SA ENG DEPT EXP DIV		
1453571	061344	ITHACA TO TOPEKA AAB	"	092745	ITHACA TO RARITAN ORD DEP		
1453604	061344	ITHACA TO TOPEKA AAB	1828229	031645	ITHACA TO SA ENG DEPT EXP DIV		
1453640	061344	ITHACA TO TOPEKA AAB	"	092745	ITHACA TO RARITAN ORD DEP		
1453722	061344	ITHACA TO TOPEKA AAB	1828230	031645	ITHACA TO SA ENG DEPT EXP DIV		
1456475	053144	ITHACA TO PHILA POE	"	092745	ITHACA TO RARITAN ORD DEP		
thru			1828231	031645	ITHACA TO SA ENG DEPT EXP DIV		
1458574	053144	ITHACA TO PHILA POE	"	092745	ITHACA TO RARITAN ORD DEP		
1458575	060344	ITHACA TO KEARNEY AAB	1828232	031645	ITHACA TO SA ENG DEPT EXP DIV		
thru			"	092745	ITHACA TO RARITAN ORD DEP		
1460424	060344	ITHACA TO KEARNEY AAB	1828233	031645	ITHACA TO SA ENG DEPT EXP DIV		
1460425	060644	ITHACA TO HUNTER AAB	"	092745	ITHACA TO RARITAN ORD DEP		
thru			1828234	031645	ITHACA TO SA ENG DEPT EXP DIV		
1461574	060644	ITHACA TO HUNTER AAB	"	092745	ITHACA TO RARITAN ORD DEP		
1461575	061344	ITHACA TO TOPEKA AAB	1828235	031645	ITHACA TO SA ENG DEPT EXP DIV		
thru			"	092745	ITHACA TO RARITAN ORD DEP		
1462710	061344	ITHACA TO TOPEKA AAB	1828236	031645	ITHACA TO SA ENG DEPT EXP DIV		
1462711	061944	ITHACA TO TOPEKA AAB	"	092745	ITHACA TO RARITAN ORD DEP		
thru			1828237	031645	ITHACA TO SA ENG DEPT EXP DIV		
1463760	061944	ITHACA TO TOPEKA AAB	"	092745	ITHACA TO RARITAN ORD DEP		
1463767	061944	ITHACA TO TOPEKA AAB	1828238	031645	ITHACA TO SA ENG DEPT EXP DIV		
thru			"	092745	ITHACA TO RARITAN ORD DEP		
1464766	061944	ITHACA TO TOPEKA AAB	1828239	031645	ITHACA TO SA ENG DEPT EXP DIV		
1464767	062844	ITHACA TO TOPEKA AAB	"	092745	ITHACA TO RARITAN ORD DEP		
thru			1828240	031645	ITHACA TO SA ENG DEPT EXP DIV		
1466766	062844	ITHACA TO TOPEKA AAB	"	092745	ITHACA TO RARITAN ORD DEP		
1466773	062844	ITHACA TO TOPEKA AAB	1828241	031645	ITHACA TO SA ENG DEPT EXP DIV		
thru			"	092745	ITHACA TO RARITAN ORD DEP		
1468294	062844	ITHACA TO TOPEKA AAB	1828242	031645	ITHACA TO SA ENG DEPT EXP DIV		
1468295	062844	ITHACA TO KEARNEY AAB	"	092745	ITHACA TO RARITAN ORD DEP		
thru			1828243	031645	ITHACA TO SA ENG DEPT EXP DIV		
1469522	062844	ITHACA TO KEARNEY AAB	"	092745	ITHACA TO RARITAN ORD DEP		
1469523	070344	ITHACA TO KEARNEY AAB	1828244	031645	ITHACA TO SA ENG DEPT EXP DIV		
thru			"	092745	ITHACA TO RARITAN ORD DEP		
1470422	070344	ITHACA TO KEARNEY AAB	1828245	031645	ITHACA TO SA ENG DEPT EXP DIV		
1470429	070344	ITHACA TO KEARNEY AAB	"	092745	ITHACA TO RARITAN ORD DEP		
thru			1828246	031645	ITHACA TO SA ENG DEPT EXP DIV		
1470878	070344	ITHACA TO KEARNEY AAB	"	092745	ITHACA TO RARITAN ORD DEP		
1470879	070744	ITHACA TO MITCHELL FLD	1828247	031645	ITHACA TO SA ENG DEPT EXP DIV		
thru			"	092745	ITHACA TO RARITAN ORD DEP		
1471428	070744	ITHACA TO MITCHELL FLD	1828248	031645	ITHACA TO SA ENG DEPT EXP DIV		
1816642	033045	ITHACA TO ROCK ISLAND ORD DEP	"	092745	ITHACA TO RARITAN ORD DEP		
1816643	013145	ITHACA TO ROCK ISLAND ORD DEP	1828249	031645	ITHACA TO SA ENG DEPT EXP DIV		
thru			"	092745	ITHACA TO RARITAN ORD DEP		
1818242	013145	ITHACA TO ROCK ISLAND ORD DEP	1828250	031645	ITHACA TO SA ENG DEPT EXP DIV		
1818249	013145	ITHACA TO ROCK ISLAND ORD DEP	"	092745	ITHACA TO RARITAN ORD DEP		
thru			1828251	031645	ITHACA TO SA ENG DEPT EXP DIV		
1820598	013145	ITHACA TO ROCK ISLAND ORD DEP	"	092745	ITHACA TO RARITAN ORD DEP		
1820604	013145	ITHACA TO ROCK ISLAND ORD DEP	1828252	031645	ITHACA TO SA ENG DEPT EXP DIV		
thru			"	092745	ITHACA TO RARITAN ORD DEP		
1821653	013145	ITHACA TO ROCK ISLAND ORD DEP	1828253	031645	ITHACA TO SA ENG DEPT EXP DIV		
1821654	020245	ITHACA TO BENICIA ORD DEP	"	092745	ITHACA TO RARITAN ORD DEP		
thru			1828254	031645	ITHACA TO SA ENG DEPT EXP DIV		
1822003	020245	ITHACA TO BENICIA ORD DEP	"	092745	ITHACA TO RARITAN ORD DEP		
1822010	020245	ITHACA TO BENICIA ORD DEP	1828255	031645	ITHACA TO SA ENG DEPT EXP DIV		
thru			"	092745	ITHACA TO RARITAN ORD DEP		
1823659	020245	ITHACA TO BENICIA ORD DEP	1828256	031645	ITHACA TO SA ENG DEPT EXP DIV		
1823660	021545	ITHACA TO BELLE MEADE ASF DEP	"	092745	ITHACA TO RARITAN ORD DEP		
thru			1828257	031645	ITHACA TO SA ENG DEPT EXP DIV		
1825959	021545	ITHACA TO BELLE MEADE ASF DEP	"	092745	ITHACA TO RARITAN ORD DEP		
1825963	021545	ITHACA TO BELLE MEADE ASF DEP	1828258	031645	ITHACA TO SA ENG DEPT EXP DIV		
thru			"	092745	ITHACA TO RARITAN ORD DEP		
1827912	021545	ITHACA TO BELLE MEADE ASF DEP	1828259	031645	ITHACA TO SA ENG DEPT EXP DIV		
1827919	021545	ITHACA TO BELLE MEADE ASF DEP	"	092745	ITHACA TO RARITAN ORD DEP		
thru			1828260	031645	ITHACA TO SA ENG DEPT EXP DIV		
1828218	021545	ITHACA TO BELLE MEADE ASF DEP	"	092745	ITHACA TO RARITAN ORD DEP		
1828219	031645	ITHACA TO SA ENG DEPT EXP DIV	1828261	031645	ITHACA TO SA ENG DEPT EXP DIV		
"	092745	ITHACA TO RARITAN ORD DEP	"	092745	ITHACA TO RARITAN ORD DEP		
1828220	031645	ITHACA TO SA ENG DEPT EXP DIV	1828262	031645	ITHACA TO SA ENG DEPT EXP DIV		
"	092745	ITHACA TO RARITAN ORD DEP	"	092745	ITHACA TO RARITAN ORD DEP		
1828221	031645	ITHACA TO SA ENG DEPT EXP DIV	1828263	031645	ITHACA TO SA ENG DEPT EXP DIV		
"	092745	ITHACA TO RARITAN ORD DEP	"	092745	ITHACA TO RARITAN ORD DEP		
1828222	031645	ITHACA TO SA ENG DEPT EXP DIV	1828264	031645	ITHACA TO SA ENG DEPT EXP DIV		
"	092745	ITHACA TO RARITAN ORD DEP	"	092745	ITHACA TO RARITAN ORD DEP		
1828223	031645	ITHACA TO SA ENG DEPT EXP DIV	1828265	031645	ITHACA TO SA ENG DEPT EXP DIV		

Ithaca M1911A1 Pistol Deliveries (Cont'd)

[illegible]

Ithaca M1911A1 Pistol Deliveries (Cont'd)

[illegible]

Ithaca M1911A1 Pistol Deliveries (Cont'd)

Serial	Model	MMDDYY	Usage	Serial	Model	MMDDYY	Usage
1841601		033045	ITHACA TO ROCK ISLAND ORD DEP	1867581		082144	ITHACA TO NAV SUP DEP NORFOLK
thru				1867582		082944	ITHACA TO BENICIA ORD DEP
1845997		033045	ITHACA TO ROCK ISLAND ORD DEP	thru			
1846004		071444	ITHACA TO BENICIA ORD DEP	1870581		082944	ITHACA TO BENICIA ORD DEP
thru				1870582		090644	ITHACA TO SAN ANTONIO ARS
1848753		071444	ITHACA TO BENICIA ORD DEP	thru			
1848758		071444	ITHACA TO BENICIA ORD DEP	1871881		090644	ITHACA TO SAN ANTONIO ARS
thru				1871888		090644	ITHACA TO SAN ANTONIO ARS
1849007		071444	ITHACA TO BENICIA ORD DEP	thru			
1849008		072044	ITHACA TO BENICIA ORD DEP	1872587		090644	ITHACA TO SAN ANTONIO ARS
thru				1872588		090944	ITHACA TO AUGUSTA ORD DEP
1851507		072044	ITHACA TO BENICIA ORD DEP	thru			
1851533		072044	ITHACA TO BENICIA ORD DEP	1877587		090944	ITHACA TO AUGUSTA ORD DEP
thru				1877588		092144	ITHACA TO NAV SUP DEP NORFOLK
1852532		072044	ITHACA TO BENICIA ORD DEP	thru			
1852533		072744	ITHACA TO BENICIA ORD DEP	1878137		092144	ITHACA TO NAV SUP DEP NORFOLK
thru				1878144		092144	ITHACA TO NAV SUP DEP NORFOLK
1852732		072744	ITHACA TO BENICIA ORD DEP	thru			
1852739		072744	ITHACA TO BENICIA ORD DEP	1881793		092144	ITHACA TO NAV SUP DEP NORFOLK
thru				1881800		092144	ITHACA TO NAV SUP DEP NORFOLK
1856038		072744	ITHACA TO BENICIA ORD DEP	thru			
1856039		073044	ITHACA TO NEW YORK POE	1885299		092144	ITHACA TO NAV SUP DEP NORFOLK
thru				1885300		100444	ITHACA TO BENICIA ORD DEP
1858038		073044	ITHACA TO NEW YORK POE	thru			
1858039		080544	ITHACA TO RARITAN ORD DEP	1886349		100444	ITHACA TO BENICIA ORD DEP
thru				1886356		100444	ITHACA TO BENICIA ORD DEP
1862044		080544	ITHACA TO RARITAN ORD DEP	thru			
1862070		080544	ITHACA TO RARITAN ORD DEP	1888655		100444	ITHACA TO BENICIA ORD DEP
thru				1888656		101344	ITHACA TO BENICIA ORD DEP
1863045		080544	ITHACA TO RARITAN ORD DEP	thru			
1863045		080944	ITHACA TO COLT	1890503		101344	ITHACA TO BENICIA ORD DEP
1863046		080544	ITHACA TO RARITAN ORD DEP	2075104		102144	ITHACA TO BRIT MIN OF WAR TRANS
"		080944	ITHACA TO COLT	thru			
1863047		080544	ITHACA TO RARITAN ORD DEP	2076353		102144	ITHACA TO BRIT MIN OF WAR TRANS
"		080944	ITHACA TO COLT	2076354		102444	ITHACA TO BENICIA ARS
1863048		080544	ITHACA TO RARITAN ORD DEP	thru			
"		080944	ITHACA TO COLT	2078353		102444	ITHACA TO BENICIA ARS
1863049		080544	ITHACA TO RARITAN ORD DEP	2078354		102844	ITHACA TO ROCK ISLAND ARS
"		080944	ITHACA TO COLT	thru			
1863050		080544	ITHACA TO RARITAN ORD DEP	2078603		102844	ITHACA TO ROCK ISLAND ARS
"		080944	ITHACA TO COLT	2078610		102844	ITHACA TO ROCK ISLAND ARS
1863051		080544	ITHACA TO RARITAN ORD DEP	thru			
"		080944	ITHACA TO COLT	2081359		102844	ITHACA TO ROCK ISLAND ARS
1863052		080544	ITHACA TO RARITAN ORD DEP	2081360		103044	ITHACA TO BENICIA ORD DEP
"		080944	ITHACA TO COLT	thru			
1863053		080544	ITHACA TO RARITAN ORD DEP	2082459		103044	ITHACA TO BENICIA ORD DEP
"		080944	ITHACA TO COLT	2082466		103044	ITHACA TO BENICIA ORD DEP
1863054		080544	ITHACA TO RARITAN ORD DEP	thru			
"		080944	ITHACA TO COLT	2086365		103044	ITHACA TO BENICIA ORD DEP
1863055		080544	ITHACA TO RARITAN ORD DEP	2086366		103044	ITHACA TO BRIT MIN OF WAR TRANS
"		080944	ITHACA TO COLT	thru			
1863056		080544	ITHACA TO RARITAN ORD DEP	2087365		103044	ITHACA TO BRIT MIN OF WAR TRANS
"		080944	ITHACA TO COLT	2087366		110244	ITHACA TO RARITAN ORD DEP
1863057		080544	ITHACA TO RARITAN ORD DEP	thru			
"		080944	ITHACA TO COLT	2088265		110244	ITHACA TO RARITAN ORD DEP
1863058		080544	ITHACA TO RARITAN ORD DEP	2088272		110244	ITHACA TO RARITAN ORD DEP
"		080944	ITHACA TO COLT	thru			
1863059		080544	ITHACA TO RARITAN ORD DEP	2089371		110244	ITHACA TO RARITAN ORD DEP
"		080944	ITHACA TO COLT	2089372		111744	ITHACA TO NAV SUP DEP OAKLAND
1863060		080544	ITHACA TO RARITAN ORD DEP	thru			
"		080944	ITHACA TO COLT	2091521		111744	ITHACA TO NAV SUP DEP OAKLAND
1863061		080544	ITHACA TO RARITAN ORD DEP	2091522		110744	ITHACA TO REMINGTON RAND
"		080944	ITHACA TO COLT	thru			
1863062		080544	ITHACA TO RARITAN ORD DEP	2091546		110744	ITHACA TO REMINGTON RAND
"		080944	ITHACA TO COLT	2091547		111744	ITHACA TO NAV SUP DEP OAKLAND
1863063		080544	ITHACA TO RARITAN ORD DEP	thru			
"		080944	ITHACA TO COLT	2092596		111744	ITHACA TO NAV SUP DEP OAKLAND
1863064		080544	ITHACA TO RARITAN ORD DEP	2092603		111744	ITHACA TO NAV SUP DEP OAKLAND
"		080944	ITHACA TO COLT	thru			
1863065		080544	ITHACA TO RARITAN ORD DEP	2096402		111744	ITHACA TO NAV SUP DEP OAKLAND
thru		080944	ITHACA TO COLT	2096403		112144	ITHACA TO ROCK ISLAND ORD DEP
1863069		080944	ITHACA TO COLT	thru			
1863070		081644	ITHACA TO LONGUE POINTE ORD DEP	2098902		112144	ITHACA TO ROCK ISLAND ORD DEP
thru				2098903		120944	ITHACA TO BENICIA ORD DEP
1864569		081644	ITHACA TO LONGUE POINTE ORD DEP	thru			
1864570		082144	ITHACA TO NAV SUP DEP NORFOLK	2099002		120944	ITHACA TO BENICIA ORD DEP
thru				2099010		120944	ITHACA TO BENICIA ORD DEP
1865119		082144	ITHACA TO NAV SUP DEP NORFOLK	thru			
1865126		082144	ITHACA TO NAV SUP DEP NORFOLK	2099308		120944	ITHACA TO BENICIA ORD DEP
thru				2099309		112244	ITHACA TO SPRINGFIELD ARMORY
1867125		082144	ITHACA TO NAV SUP DEP NORFOLK	"		092745	ITHACA TO RARITAN ORD DEP
1867132		082144	ITHACA TO NAV SUP DEP NORFOLK	2099310		112244	ITHACA TO SPRINGFIELD ARMORY
thru				2099311		112244	ITHACA TO SPRINGFIELD ARMORY
				2099311		092745	ITHACA TO RARITAN ORD DEP

Ithaca M1911A1 Pistol Deliveries (Cont'd)

Serial	Model	MMDDYY	Usage	Serial	Model	MMDDYY	Usage
2099312	"	112244	ITHACA TO SPRINGFIELD ARMORY	2099354	"	092745	ITHACA TO RARITAN ORD DEP
"	"	092745	ITHACA TO RARITAN ORD DEP	2099355	"	112244	ITHACA TO SPRINGFIELD ARMORY
2099313	"	112244	ITHACA TO SPRINGFIELD ARMORY	2099356	"	112244	ITHACA TO SPRINGFIELD ARMORY
"	"	092745	ITHACA TO RARITAN ORD DEP	2099356	"	092745	ITHACA TO RARITAN ORD DEP
2099314	"	112244	ITHACA TO SPRINGFIELD ARMORY	2099357	"	112244	ITHACA TO SPRINGFIELD ARMORY
"	"	092745	ITHACA TO RARITAN ORD DEP	2099358	"	112244	ITHACA TO SPRINGFIELD ARMORY
2099315	"	112244	ITHACA TO SPRINGFIELD ARMORY	2099358	"	092745	ITHACA TO RARITAN ORD DEP
"	"	092745	ITHACA TO RARITAN ORD DEP	2099360	"	120944	ITHACA TO BENICIA ORD DEP
2099316	"	112244	ITHACA TO SPRINGFIELD ARMORY	"	"	thru	
"	"	092745	ITHACA TO RARITAN ORD DEP	2101958	"	120944	ITHACA TO BENICIA ORD DEP
2099317	"	112244	ITHACA TO SPRINGFIELD ARMORY	2101959	"	120944	ITHACA TO ROCK ISLAND ARS
"	"	092745	ITHACA TO RARITAN ORD DEP	"	"	thru	
2099318	"	112244	ITHACA TO SPRINGFIELD ARMORY	2105158	"	120944	ITHACA TO ROCK ISLAND ARS
"	"	092745	ITHACA TO RARITAN ORD DEP	2105165	"	120944	ITHACA TO ROCK ISLAND ARS
2099319	"	112244	ITHACA TO SPRINGFIELD ARMORY	"	"	thru	
"	"	092745	ITHACA TO RARITAN ORD DEP	2106464	"	120944	ITHACA TO ROCK ISLAND ARS
2099320	"	112244	ITHACA TO SPRINGFIELD ARMORY	2106465	"	121144	ITHACA TO RARITAN ORD DEP
"	"	092745	ITHACA TO RARITAN ORD DEP	"	"	thru	
2099321	"	112244	ITHACA TO SPRINGFIELD ARMORY	2110464	"	121144	ITHACA TO RARITAN ORD DEP
"	"	092745	ITHACA TO RARITAN ORD DEP	2110465	"	010245	ITHACA TO AUGUSTA ORD DEP
2099322	"	112244	ITHACA TO SPRINGFIELD ARMORY	"	"	thru	
2099323	"	112244	ITHACA TO SPRINGFIELD ARMORY	2111214	"	010245	ITHACA TO AUGUSTA ORD DEP
2099323	"	092745	ITHACA TO RARITAN ORD DEP	2111221	"	010245	ITHACA TO AUGUSTA ORD DEP
2099324	"	112244	ITHACA TO SPRINGFIELD ARMORY	"	"	thru	
"	"	092745	ITHACA TO RARITAN ORD DEP	2114470	"	010245	ITHACA TO AUGUSTA ORD DEP
2099325	"	112244	ITHACA TO SPRINGFIELD ARMORY	2114471	"	010245	ITHACA TO RARITAN ORD DEP
"	"	092745	ITHACA TO RARITAN ORD DEP	"	"	thru	
2099326	"	112244	ITHACA TO SPRINGFIELD ARMORY	2116970	"	010245	ITHACA TO RARITAN ORD DEP
"	"	092745	ITHACA TO RARITAN ORD DEP	2116977	"	010245	ITHACA TO RARITAN ORD DEP
2099327	"	112244	ITHACA TO SPRINGFIELD ARMORY	"	"	thru	
"	"	092745	ITHACA TO RARITAN ORD DEP	2119476	"	010245	ITHACA TO RARITAN ORD DEP
2099328	"	112244	ITHACA TO SPRINGFIELD ARMORY	2119477	"	010245	ITHACA TO BENICIA ORD DEP
"	"	092745	ITHACA TO RARITAN ORD DEP	"	"	thru	
2099329	"	112244	ITHACA TO SPRINGFIELD ARMORY	2123276	"	010245	ITHACA TO BENICIA ORD DEP
"	"	092745	ITHACA TO RARITAN ORD DEP	2123283	"	010245	ITHACA TO BENICIA ORD DEP
2099330	"	112244	ITHACA TO SPRINGFIELD ARMORY	"	"	thru	
"	"	092745	ITHACA TO RARITAN ORD DEP	2124482	"	010245	ITHACA TO BENICIA ORD DEP
2099331	"	112244	ITHACA TO SPRINGFIELD ARMORY	2124483	"	011645	ITHACA TO BENICIA ORD DEP
"	"	092745	ITHACA TO RARITAN ORD DEP	"	"	thru	
2099332	"	112244	ITHACA TO SPRINGFIELD ARMORY	2127082	"	011645	ITHACA TO BENICIA ORD DEP
"	"	092745	ITHACA TO RARITAN ORD DEP	2127083	"	010645	ITHACA TO COLT
2099333	"	112244	ITHACA TO SPRINGFIELD ARMORY	"	"	thru	
"	"	092745	ITHACA TO RARITAN ORD DEP	2127107	"	010645	ITHACA TO COLT
2099334	"	112244	ITHACA TO SPRINGFIELD ARMORY	2127108	"	011645	ITHACA TO BENICIA ORD DEP
"	"	092745	ITHACA TO RARITAN ORD DEP	"	"	thru	
2099335	"	112244	ITHACA TO SPRINGFIELD ARMORY	2129507	"	011645	ITHACA TO BENICIA ORD DEP
"	"	092745	ITHACA TO RARITAN ORD DEP	2129508	"	011845	ITHACA TO RARITAN ORD DEP
2099336	"	112244	ITHACA TO SPRINGFIELD ARMORY	"	"	thru	
"	"	092745	ITHACA TO RARITAN ORD DEP	2129807	"	011845	ITHACA TO RARITAN ORD DEP
2099337	"	112244	ITHACA TO SPRINGFIELD ARMORY	2129814	"	011845	ITHACA TO RARITAN ORD DEP
"	"	092745	ITHACA TO RARITAN ORD DEP	"	"	thru	
2099338	"	112244	ITHACA TO SPRINGFIELD ARMORY	2134403	"	011845	ITHACA TO RARITAN ORD DEP
"	"	092745	ITHACA TO RARITAN ORD DEP	2619014	"	041745	ITHACA TO AUGUSTA ARS
2099339	"	112244	ITHACA TO SPRINGFIELD ARMORY	"	"	thru	
"	"	092745	ITHACA TO RARITAN ORD DEP	2619563	"	041745	ITHACA TO AUGUSTA ARS
2099340	"	112244	ITHACA TO SPRINGFIELD ARMORY	2619565	"	041745	ITHACA TO AUGUSTA ARS
"	"	092745	ITHACA TO RARITAN ORD DEP	"	"	thru	
2099341	"	112244	ITHACA TO SPRINGFIELD ARMORY	2622514	"	041745	ITHACA TO AUGUSTA ARS
"	"	092745	ITHACA TO RARITAN ORD DEP	2622521	"	041745	ITHACA TO AUGUSTA ARS
2099342	"	112244	ITHACA TO SPRINGFIELD ARMORY	"	"	thru	
"	"	092745	ITHACA TO RARITAN ORD DEP	2622570	"	041745	ITHACA TO AUGUSTA ARS
2099343	"	112244	ITHACA TO SPRINGFIELD ARMORY	2622577	"	041745	ITHACA TO AUGUSTA ARS
"	"	092745	ITHACA TO RARITAN ORD DEP	"	"	thru	
2099344	"	112244	ITHACA TO SPRINGFIELD ARMORY	2624026	"	041745	ITHACA TO AUGUSTA ARS
"	"	092745	ITHACA TO RARITAN ORD DEP	2624027	"	050745	ITHACA TO ROCK ISLAND ORD DEP
2099345	"	112244	ITHACA TO SPRINGFIELD ARMORY	"	"	thru	
"	"	092745	ITHACA TO RARITAN ORD DEP	2625626	"	050745	ITHACA TO ROCK ISLAND ORD DEP
2099346	"	112244	ITHACA TO SPRINGFIELD ARMORY	2625628	"	050745	ITHACA TO ROCK ISLAND ORD DEP
"	"	092745	ITHACA TO RARITAN ORD DEP	"	"	thru	
2099347	"	112244	ITHACA TO SPRINGFIELD ARMORY	2629027	"	050745	ITHACA TO ROCK ISLAND ORD DEP
"	"	092745	ITHACA TO RARITAN ORD DEP	2629028	"	052945	ITHACA TO COLUMBUS ASF DEP
2099348	"	112244	ITHACA TO SPRINGFIELD ARMORY	"	"	thru	
"	"	092745	ITHACA TO RARITAN ORD DEP	2630627	"	052945	ITHACA TO COLUMBUS ASF DEP
2099349	"	112244	ITHACA TO SPRINGFIELD ARMORY	2630634	"	052945	ITHACA TO COLUMBUS ASF DEP
"	"	092745	ITHACA TO RARITAN ORD DEP	"	"	thru	
2099350	"	112244	ITHACA TO SPRINGFIELD ARMORY	2630683	"	052945	ITHACA TO COLUMBUS ASF DEP
"	"	092745	ITHACA TO RARITAN ORD DEP	2630690	"	052945	ITHACA TO COLUMBUS ASF DEP
2099351	"	112244	ITHACA TO SPRINGFIELD ARMORY	"	"	thru	
"	"	092745	ITHACA TO RARITAN ORD DEP	2630739	"	052945	ITHACA TO COLUMBUS ASF DEP
2099352	"	112244	ITHACA TO SPRINGFIELD ARMORY	2630746	"	052945	ITHACA TO COLUMBUS ASF DEP
"	"	092745	ITHACA TO RARITAN ORD DEP	"	"	thru	
2099353	"	112244	ITHACA TO SPRINGFIELD ARMORY	2630945	"	052945	ITHACA TO COLUMBUS ASF DEP
"	"	092745	ITHACA TO RARITAN ORD DEP	2630947	"	052945	ITHACA TO COLUMBUS ASF DEP
2099354	"	112244	ITHACA TO SPRINGFIELD ARMORY	2630948	"	052945	ITHACA TO COLUMBUS ASF DEP

Ithaca M1911A1 Pistol Deliveries (Cont'd)

Serial	Model	MMDDYY	Usage	Serial	Model	MMDDYY	Usage
2630949		052945	ITHACA TO COLUMBUS ASF DEP	2646391		063045	ITHACA TO BENICIA ARS
thru				2646392		072545	ITHACA TO BELLE MEADE ASF DEP
2636046		052945	ITHACA TO COLUMBUS ASF DEP	thru			
2636048		053145	ITHACA TO COLUMBUS ASF DEP	2648897		072545	ITHACA TO BELLE MEADE ASF DEP
thru				2648910		072545	ITHACA TO BELLE MEADE ASF DEP
2637397		053145	ITHACA TO COLUMBUS ASF DEP	thru			
2637398		060645	ITHACA TO COLUMBUS ASF DEP	2649759		072545	ITHACA TO BELLE MEADE ASF DEP
thru				2649761		072545	ITHACA TO BELLE MEADE ASF DEP
2638047		060645	ITHACA TO COLUMBUS ASF DEP	thru			
2638048		062645	ITHACA TO SAN ANTONIO ARS	2651404		072545	ITHACA TO BELLE MEADE ASF DEP
thru				2651405		073145	ITHACA TO BELLE MEADE ASF DEP
2639072		062645	ITHACA TO SAN ANTONIO ARS	thru			
2639073		060645	ITHACA TO COLT PAT FA CO	2654404		073145	ITHACA TO BELLE MEADE ASF DEP
thru				2654405		080645	ITHACA TO BELLE MEADE ASF DEP
2639097		060645	ITHACA TO COLT PAT FA CO	thru			
2639098		062645	ITHACA TO SAN ANTONIO ARS	2655379		080645	ITHACA TO BELLE MEADE ASF DEP
thru				2655380		090745	ITHACA TO RARITAN ORD DEP
2640647		062645	ITHACA TO SAN ANTONIO ARS	thru			
2640666		062645	ITHACA TO SAN ANTONIO ARS	2658304		090745	ITHACA TO RARITAN ORD DEP
thru				2658311		090745	ITHACA TO RARITAN ORD DEP
2642090		062645	ITHACA TO SAN ANTONIO ARS	thru			
2642091		063045	ITHACA TO BENICIA ARS	2660307		090745	ITHACA TO RARITAN ORD DEP
thru				2660309		090745	ITHACA TO RARITAN ORD DEP
2645565		063045	ITHACA TO BENICIA ARS	thru			
2645567		063045	ITHACA TO BENICIA ARS	2660318		090745	ITHACA TO RARITAN ORD DEP
thru							

Total Entries: 189,391

Miscellaneous Automatic Pistols
Cited in Ordnance Dept., Navy, and Other Records

Serial	Model	MMDDYY	Usage	Serial	Model	MMDDYY	Usage
1	22-45	081638	SA (SURVEYED)	653	LW	042356	BOARD NO. 3 TO OCO
4	22-45	081638	SA (SURVEYED)	659	LW	042356	BOARD NO. 3 TO OCO
31	T3	042356	BOARD NO. 3 TO OCO	661	UMC	110631	5TH FA MADISON BKS
45		071036	BA TO FT MACARTHUR	662	LW	042356	BOARD NO. 3 TO OCO
58		102431	2ND BN 18TH INF FT WADSWORTH	665	UMC	110631	5TH FA MADISON BKS
"		070333	CO E 18TH INF (MISSING)	667		110631	5TH FA MADISON BKS
65	ACE	031540	USN	668	LW	042356	BOARD NO. 3 TO OCO
thru				677	UMC	110631	5TH FA MADISON BKS
68	ACE	031540	USN	678		110631	5TH FA MADISON BKS
73	UMC	101631	CO H 18TH INF FT HAMILTON	680		110631	5TH FA MADISON BKS
91		110631	5TH FA MADISON BKS	684		110631	5TH FA MADISON BKS
95		042236	C M BUSH	687		110631	5TH FA MADISON BKS
101		110631	5TH FA MADISON BKS	769		090540	USS ABEL P UP SHUR TO BOSTON NY
121		042043	USS SUWANEE (CVE27)	774		062636	US MARSHALS (TURNED IN)
130	C	081831	VETERANS ADMIN	854		090844	USS DOVER (IX)
148	ACE	071341	USS FANNING (DD385)	865	UMC	100633	CO K 184TH INF CALIF NG
159	ACE	062143	NAS PEARL HARBOR	870		081541	USS ASHEVILLE (PG21)
178		020712	SA TO MANILA OD	904		090540	USS ABEL P UP SHUR TO BOSTON NY
"		011639	MAJ E ANDERSON	912		032436	54TH CAV OHIO NG (STOLEN)
"		020140	B QUILLING	"		030137	HQ TRP 54TH CAV OHIO NG (RECOV)
207		103037	BTRY B 2ND FA	932		083043	USS DELTA (AR9)
239		050424	CO M 5TH INF	939		070344	USS PINTO (ATF90)
"		052724	CO M 5TH INF	942		052832	US CONSULATE ISTANBUL
242	ACE	071341	USS FANNING (DD385)	966		101043	USS BREESE (DM18) TO EPIC 73
300		030537	157TH FA	973	SMACE	011542	USS GRIFFIN (AS13)
306		110631	5TH FA MADISON BKS	1120	SMACE	012841	NAV OP BASE NORFOLK (DELIVERED)
330		06 29	COLUMBUS GEN DEPOT TO RIA	1122		030439	USS NORTHAMPTON (CA26)
"		051931	RIA TO SELFRIDGE FLD	1123	SMACE	012841	NAV OP BASE NORFOLK (DELIVERED)
"		081138	MITCHEL FLD	1131	SMACE	012841	NAV OP BASE NORFOLK (DELIVERED)
362		102632	NY STATE ARSENAL BROOKLYN	1132	SMACE	012841	NAV OP BASE NORFOLK (DELIVERED)
364		050632	1ST SIGNAL CO FT MONMOUTH	1139		110742	USS GRIFFIN (AS13)
454	SMACE	102037	SA TO NSD SEWELL PT	1142	SMACE	012841	NAV OP BASE NORFOLK (DELIVERED)
486		020637	FT HOYLE	1143	SMACE	012841	NAV OP BASE NORFOLK (DELIVERED)
"		052737	DAMAGED	1143		072841	NAS ARGENTIA (MISSING)
501	UMC	110631	5TH FA MADISON BKS	1153	LW38	042356	BOARD NO. 3 TO OCO
512	ACE	040140	USS GREER (DD145)	1179	SMACE	012841	NAV OP BASE NORFOLK (DELIVERED)
533		101331	1ST BN 28TH INF MADISON BKS	thru			
629	UMC	100633	CO K 184TH INF CALIF NG	1181	SMACE	012841	NAV OP BASE NORFOLK (DELIVERED)
652	LW	042356	BOARD NO. 3 TO OCO	1184	SMACE	012841	NAV OP BASE NORFOLK (DELIVERED)

Model Code(s): 22-45 = Cal. .22 M1911 ACE = ACE model .22 pistol C = Commercial LW = LightWeight model
LW38 = .38 LightWeight model SMACE = Service Model ACE T3 = Experimental model UMC = Remington-UMC

Miscellaneous Auto Pistols (Cont'd)

Serial	Model	MMDDYY	Usage	Serial	Model	MMDDYY	Usage
1185	SMACE	012841	NAV OP BASE NORFOLK (DELIVERED)	1416	SMACE	012841	NAV OP BASE NORFOLK (DELIVERED)
1190	SMACE	012841	NAV OP BASE NORFOLK (DELIVERED)	1418	SMACE	012841	NAV OP BASE NORFOLK (DELIVERED)
thru				1422	SMACE	012841	NAV OP BASE NORFOLK (DELIVERED)
1192	SMACE	012841	NAV OP BASE NORFOLK (DELIVERED)	1427	SMACE	012841	NAV OP BASE NORFOLK (DELIVERED)
1196	SMACE	012841	NAV OP BASE NORFOLK (DELIVERED)	1428	SMACE	012841	NAV OP BASE NORFOLK (DELIVERED)
1199	SMACE	012841	NAV OP BASE NORFOLK (DELIVERED)	1429		123129	AMERICAN TRP SHANGHAI VOL CORPS
1210	SMACE	012841	NAV OP BASE NORFOLK (DELIVERED)	"		063035	SHANGHAI VOLUNTEER CORPS
1217	SMACE	012841	NAV OP BASE NORFOLK (DELIVERED)	"	SMACE	012841	NAV OP BASE NORFOLK (DELIVERED)
1266	SMACE	012841	NAV OP BASE NORFOLK (DELIVERED)	thru			
1267	SMACE	012841	NAV OP BASE NORFOLK (DELIVERED)	1432	SMACE	012841	NAV OP BASE NORFOLK (DELIVERED)
1273	X	042336	117TH INF TENN NG	1435		092533	17TH FA
1274	SMACE	012841	NAV OP BASE NORFOLK (DELIVERED)	"	SMACE	012841	NAV OP BASE NORFOLK (DELIVERED)
1277	SMACE	012841	NAV OP BASE NORFOLK (DELIVERED)	1436	UMC	110631	5TH FA MADISON BKS
1278	X	052739	CO F 103RD QM PA NG	"	SMACE	012841	NAV OP BASE NORFOLK (DELIVERED)
"	X	052739	FT MYER	1439	SMACE	012841	NAV OP BASE NORFOLK (DELIVERED)
"	SMACE	012841	NAV OP BASE NORFOLK (DELIVERED)	thru			
1284	X	042336	117TH INF TENN NG	1448	SMACE	012841	NAV OP BASE NORFOLK (DELIVERED)
1298	SMACE	012841	NAV OP BASE NORFOLK (DELIVERED)	1450	SMACE	012841	NAV OP BASE NORFOLK (DELIVERED)
1299	SMACE	012841	NAV OP BASE NORFOLK (DELIVERED)	1452	SMACE	012841	NAV OP BASE NORFOLK (DELIVERED)
1302	SMACE	012841	NAV OP BASE NORFOLK (DELIVERED)	thru			
1303	SMACE	012841	NAV OP BASE NORFOLK (DELIVERED)	1471	SMACE	012841	NAV OP BASE NORFOLK (DELIVERED)
1305	SMACE	012841	NAV OP BASE NORFOLK (DELIVERED)	1474	SMACE	012841	NAV OP BASE NORFOLK (DELIVERED)
1307	SMACE	012841	NAV OP BASE NORFOLK (DELIVERED)	thru			
1310	SMACE	012841	NAV OP BASE NORFOLK (DELIVERED)	1476	SMACE	012841	NAV OP BASE NORFOLK (DELIVERED)
1312	SMACE	012841	NAV OP BASE NORFOLK (DELIVERED)	1478	SMACE	012841	NAV OP BASE NORFOLK (DELIVERED)
1313	SMACE	012841	NAV OP BASE NORFOLK (DELIVERED)	1483	SMACE	012841	NAV OP BASE NORFOLK (DELIVERED)
1315	SMACE	012841	NAV OP BASE NORFOLK (DELIVERED)	1487	SMACE	012841	NAV OP BASE NORFOLK (DELIVERED)
1316	X	121539	MG TRP 3RD CAV	1488	SMACE	012841	NAV OP BASE NORFOLK (DELIVERED)
"	SMACE	012841	NAV OP BASE NORFOLK (DELIVERED)	1493	SMACE	012841	NAV OP BASE NORFOLK (DELIVERED)
thru				1497	SMACE	012841	NAV OP BASE NORFOLK (DELIVERED)
1319	SMACE	012841	NAV OP BASE NORFOLK (DELIVERED)	1499	SMACE	012841	NAV OP BASE NORFOLK (DELIVERED)
1321	X	042336	117TH INF TENN NG	1503	SMACE	012841	NAV OP BASE NORFOLK (DELIVERED)
"	SMACE	012841	NAV OP BASE NORFOLK (DELIVERED)	1506	SMACE	012841	NAV OP BASE NORFOLK (DELIVERED)
thru				1507	SMACE	012841	NAV OP BASE NORFOLK (DELIVERED)
1329	SMACE	012841	NAV OP BASE NORFOLK (DELIVERED)	1509	SMACE	012841	NAV OP BASE NORFOLK (DELIVERED)
1332	SMACE	012841	NAV OP BASE NORFOLK (DELIVERED)	1510	SMACE	012841	NAV OP BASE NORFOLK (DELIVERED)
1334	SMACE	012841	NAV OP BASE NORFOLK (DELIVERED)	1512	SMACE	012841	NAV OP BASE NORFOLK (DELIVERED)
1337	SMACE	012841	NAV OP BASE NORFOLK (DELIVERED)	1514	SMACE	012841	NAV OP BASE NORFOLK (DELIVERED)
1339	SMACE	012841	NAV OP BASE NORFOLK (DELIVERED)	1515		121222	BATTY B 60TH AA BATN
thru				1517	SMACE	012841	NAV OP BASE NORFOLK (DELIVERED)
1344	SMACE	012841	NAV OP BASE NORFOLK (DELIVERED)	1518	X	020137	BTRY A 131ST FA (STOLEN)
1346	SMACE	012841	NAV OP BASE NORFOLK (DELIVERED)	"	SMACE	012841	NAV OP BASE NORFOLK (DELIVERED)
1348	SMACE	012841	NAV OP BASE NORFOLK (DELIVERED)	1519	SMACE	012841	NAV OP BASE NORFOLK (DELIVERED)
thru				1522	SMACE	012841	NAV OP BASE NORFOLK (DELIVERED)
1353	SMACE	012841	NAV OP BASE NORFOLK (DELIVERED)	1524	SMACE	012841	NAV OP BASE NORFOLK (DELIVERED)
1356	SMACE	012841	NAV OP BASE NORFOLK (DELIVERED)	1525	SMACE	012841	NAV OP BASE NORFOLK (DELIVERED)
1357		110631	5TH FA MADISON BKS	1527	SMACE	012841	NAV OP BASE NORFOLK (DELIVERED)
1358	SMACE	012841	NAV OP BASE NORFOLK (DELIVERED)	thru			
1361	SMACE	012841	NAV OP BASE NORFOLK (DELIVERED)	1536	SMACE	012841	NAV OP BASE NORFOLK (DELIVERED)
thru				1538	SMACE	012841	NAV OP BASE NORFOLK (DELIVERED)
1364	SMACE	012841	NAV OP BASE NORFOLK (DELIVERED)	1539	SMACE	012841	NAV OP BASE NORFOLK (DELIVERED)
1365	UMC	041135	FT BRAGG	1541	SMACE	012841	NAV OP BASE NORFOLK (DELIVERED)
"		041135	FT BRAGG	1543	SMACE	012841	NAV OP BASE NORFOLK (DELIVERED)
1366	SMACE	012841	NAV OP BASE NORFOLK (DELIVERED)	1544	SMACE	012841	NAV OP BASE NORFOLK (DELIVERED)
1367	SMACE	012841	NAV OP BASE NORFOLK (DELIVERED)	1546	SMACE	012841	NAV OP BASE NORFOLK (DELIVERED)
1370	SMACE	012841	NAV OP BASE NORFOLK (DELIVERED)	1547	SMACE	012841	NAV OP BASE NORFOLK (DELIVERED)
thru				1550	SMACE	012841	NAV OP BASE NORFOLK (DELIVERED)
1372	SMACE	012841	NAV OP BASE NORFOLK (DELIVERED)	1558	SMACE	012841	NAV OP BASE NORFOLK (DELIVERED)
1373	SMACE	081343	USS TROUT (SS202)	1559	SMACE	012841	NAV OP BASE NORFOLK (DELIVERED)
1374	SMACE	012841	NAV OP BASE NORFOLK (DELIVERED)	1561	SMACE	012841	NAV OP BASE NORFOLK (DELIVERED)
1376	SMACE	012841	NAV OP BASE NORFOLK (DELIVERED)	1562	SMACE	012841	NAV OP BASE NORFOLK (DELIVERED)
thru				1564	SMACE	012841	NAV OP BASE NORFOLK (DELIVERED)
1379	SMACE	012841	NAV OP BASE NORFOLK (DELIVERED)	1566	SMACE	012841	NAV OP BASE NORFOLK (DELIVERED)
1381	SMACE	012841	NAV OP BASE NORFOLK (DELIVERED)	1567	SMACE	012841	NAV OP BASE NORFOLK (DELIVERED)
thru				1571	SMACE	012841	NAV OP BASE NORFOLK (DELIVERED)
1385	SMACE	012841	NAV OP BASE NORFOLK (DELIVERED)	thru			
1388	SMACE	012841	NAV OP BASE NORFOLK (DELIVERED)	1574	SMACE	012841	NAV OP BASE NORFOLK (DELIVERED)
1389	SMACE	012841	NAV OP BASE NORFOLK (DELIVERED)	1580	SMACE	012841	NAV OP BASE NORFOLK (DELIVERED)
1393	SMACE	012841	NAV OP BASE NORFOLK (DELIVERED)	"	SMACE	052644	USS ELLYSON (DD454)
thru				1586	SMACE	012841	NAV OP BASE NORFOLK (DELIVERED)
1398	SMACE	012841	NAV OP BASE NORFOLK (DELIVERED)	1607		030338	DAMAGED
1400	SMACE	012841	NAV OP BASE NORFOLK (DELIVERED)	1612	ACE	051443	SUBMARINE BASE NEW LONDON
1402	SMACE	012841	NAV OP BASE NORFOLK (DELIVERED)	1638	ACE	051443	SUBMARINE BASE NEW LONDON
1403		110631	5TH FA MADISON BKS	1639	ACE	051443	SUBMARINE BASE NEW LONDON
"	SMACE	012841	NAV OP BASE NORFOLK (DELIVERED)	1662	X	040140	NAV OP BASE NORFOLK (LOST)
thru				"	X	041040	USS RANGER (CV4)
1406	SMACE	012841	NAV OP BASE NORFOLK (DELIVERED)	1712	X	041437	FT CROCKETT
1407		110631	5TH FA MADISON BKS	1720	ACE	051443	SUBMARINE BASE NEW LONDON
1408	SMACE	012841	NAV OP BASE NORFOLK (DELIVERED)	1795		080334	USS EAGLE #32
thru				1896		080543	USS BRAZOS (AO)
1410	SMACE	012841	NAV OP BASE NORFOLK (DELIVERED)	"		080543	USS BRAZOS (A04)
1412	SMACE	012841	NAV OP BASE NORFOLK (DELIVERED)	1942		061242	USS J D EDWARDS (DD216)
1414	SMACE	012841	NAV OP BASE NORFOLK (DELIVERED)	1972	SMACE	081544	USS EUCALYPTUS (AN16)
				2021	UMC	100633	CO K 184TH INF CALIF NG

Model Code(s): ACE = ACE model .22 pistol SMACE = Service Model ACE UMC = Remington-UMC X = Renumbered

SPRINGFIELD RESEARCH PRODUCT LIST

BOOKS, DISKETTES, OTHER PUBLICATIONS

Serial Numbers of US Martial Arms

Vol. 1, 1983, 103 pp.	\$15.00	Vol. 3, 1990, 198 pp.	20.00
Vol. 2, 1986, 209 pp.	20.00	Vol. 4, 1995, 320 pp.	30.00

Martial Arms Collector (per year) 25.00

Available back issues, *Springfield Research Newsletter* 5.00
(3 - 55) (Index to 1st 40 issues: SASE)

Back issues, *Martial Arms Collector* (Issue 56 to current issue) 10.00

Cumulative Summary of Serial Numbers

Diskettes in PC 3½", std. 5¼", 5¼"HD, DEC format	50.00
Diskette Updates (per year, updated quarterly)	50.00

SERIAL NUMBER LETTERS

- 1) Sales records (M1903, M1922, M1, Win. .22 rifles, M1911NM & GO pistols) \$10.00
- 2) Service records (Civil War and Span-Am War Volunteers, General Officers) \$20.00
- 3) All others \$30.00

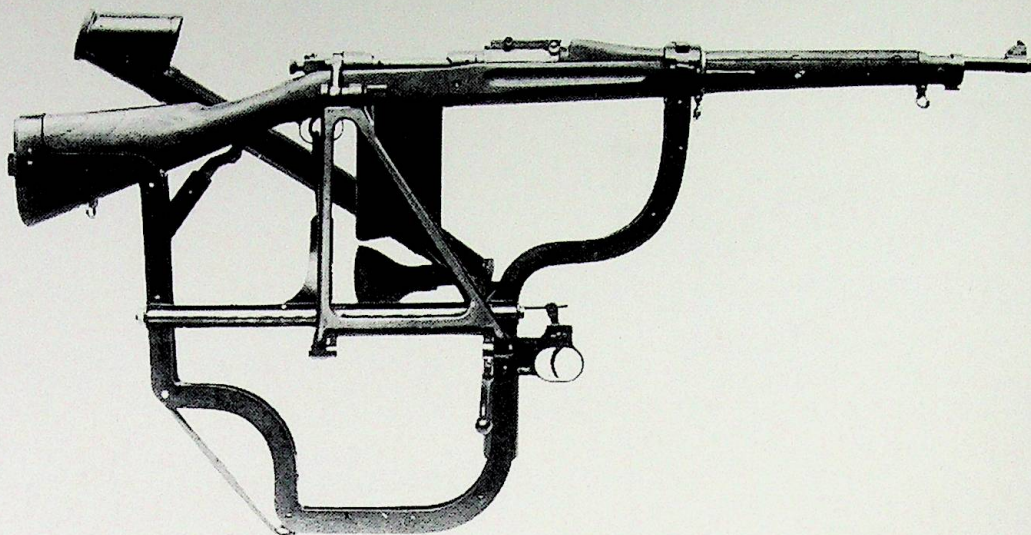
COPIES OF ORDNANCE MATERIAL

These are simply copies of material of interest from the Ordnance files, priced at the approximate cost of Archives reproduction (currently 30¢ per page).

- | | | | |
|--|-------|--|---------|
| 1) Reports on Custer's Battles of the Yellowstone, Aug., 1873 | 7.50 | 8) "Rifle, U.S. Caliber .30 M1917 — Development and Production — 1917 - 1945" — Project Supporting Paper No. 37, August 1945 | 16.00 |
| 2) "The First U. S. Small Caliber Rifle - History of the Models of 1892, 1896, 1898 and 1899 Caliber .30 Rifles and Carbines" (12 August 1943) | 9.00 | 9) Small Arms Data Book, 1939 — Section A, Weapons; Section B, Ammunition | 6.50 |
| 3) Standard Nomenclature List No. B-3, U.S. Rifle, Cal. .30, M1903 - Parts Accessories and Appendages (April 14, 1923) | 7.50 | 10) "U.S. Rifle, Cal. .30, M1 — History of Design, Dev., Procurement, and Prod., 1936 — 1945" \$36.00 | |
| 4) "History of the Development of Small Arms Conducted by the Rifle Branch During World War II", by Maj. E. G. Cooper | | 11) "Historical Notes Rel. to Rifles, Cal. .22" \$6.00 | |
| a) Experimental Designs Applied to the M1 Rifle | 7.00 | 12) Project Supporting Paper — Misc. Pistol and Revolvers — 15 Aug. '45 | \$24.00 |
| b) Shotguns | 3.00 | 13) Project Supporting Paper, Pistol, Auto., cal. .45, M1911A1, 1917 - Aug., 1945 | \$13.50 |
| 5) "Shotguns - Development, Procurement and Production — 1917-1945" — Project Supporting Paper No. 42, October 1945 | 7.00 | 14) "Summary of Issues of the Pistol, Auto., Cal. .380, Colt to General Officers" | \$36.00 |
| 6) "History of Small Arms Procurement, 1939 - 1945", written and compiled by S. H. Beach, 1st Lt., Ord. Dept. — M1903 Rifle, M1 Carbine, M1 Rifle, and Rifle Grenade Launchers | 6.50 | 15) Project Supporting Paper — Bayonets, Knives, and Scabbards — 1917 - August 1945 | \$35.00 |
| 7) Official USMC correspondence on Sniper Rifles (incl. Ord. Maint. Bulletin) | 25.50 | 16) Project Supporting Paper — U.S. Carbine, cal. .30 — Narrative & Exhibits, July 1945 ... | \$37.00 |
| | | 17) Ordnance Field Service BASE SHOP DATA, U.S. RIFLE, M1903A1, Jan. 1943 | \$16.50 |
| | | 18) Desc. & Instr. for the Use and Care of the Winchester S. S. Rifle Cal. .22 | \$4.00 |

Note: All prices include shipping by surface mail within the U. S.; prices subject to change without notice.

WANTED



SPRINGFIELDS

- 1903 Service Rifles — 1903 to 1945
- 1903 Sniper Rifles
- 1903 Hoffer Thompson .22
- Springfield .22 Rifles — 1922 to M-2

I will pay a premium for the following Springfields:

- T-Model Springfields in mint condition.
- Heavy Barrel Springfields listed and original.
- International Match Springfields listed and original.
- 1903 S & C Type National Match Rifle with documents.
- Original MI Garrand Rifles.
- Antique Springfields from 1812 to 1898.
- All related accessories and parts.

I will appraise your collection free of charge. (will travel)

PETER CARDONE

Antique & Collectors Arms

Trap and Skeet Inc.
Old Rt. 52, Stormville, NY 12582
914-221-9016

TOP PRICES PAID

GUNS

SCOPES

ACCESSORIES